



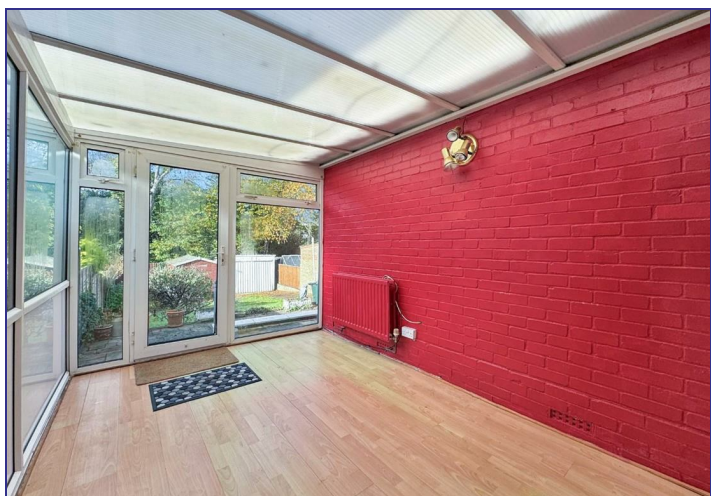
40 Bybrook Road, Kennington, Ashford, TN24 9JB
Price £265,000

GOULD
HARRISON

A pleasantly appointed semi-detached bungalow in the popular Kennington area of Ashford.

The property comprises an entrance hall, sitting room, kitchen, conservatory, two bedrooms and bathroom/WC. The rear garden enjoys a secluded feel with the further benefits including gas central heating, double glazing, driveway and garage. Ashford town centre is only 1 mile distant with a wide range of shopping and leisure facilities whilst the convenient bus routes are also very nearby.

NO ONWARD CHAIN.



UPVC Casement Door

Through to:

Hallway

Laminate flooring, radiator, coved ceiling, loft access, doors to:

Sitting Room 14'11 x 10'3 (4.55m x 3.12m)

Double glazed bay window to front, coved ceiling, radiator, TV aerial and telephone points, airing cupboard housing gas fired boiler and immersion tank.

Kitchen 8'8 x 7'8 (2.64m x 2.34m)

Double glazed casement door to rear, fitted wall and base units, stainless steel sink with mixer tap and drainer unit, plumbing and space for washing machine, storage cupboard.

Bedroom One 12'9 x 10'1 (3.89m x 3.07m)

Double glazed window to rear, radiator, coved ceiling.

Bedroom Two 9'0 x 10'3 (2.74m x 3.12m)

Double glazed window to front, radiator, coved ceiling.

Bathroom

Panelled bath with mixer tap, low level WC, pedestal hand basin with chrome mixer tap, partly tiled walls, frosted double glazed window to side, radiator, coved ceiling.

Conservatory 8'4 x 13'7 (2.54m x 4.14m)

Double glazed casement door to rear, laminate flooring.

Rear Garden

Mainly laid to lawn with paved patio seating area, panel enclosed fencing, wood built shed, backing onto nature reserve, side gated access.

Garage & Driveway

Providing off road parking leading to a single detached garage at the rear of the property.

Tenure

Freehold.

Services

All main services are connected.

Council Tax

Ashford Borough Council Band: C.

