



CLIVEPEARCE
Now you're moving

3 Bedrooms

Bungalow - Detached

Asking Price

£385,000

Located in

Falmouth



www.clivepearceproperty.com



Springfield Park

Falmouth | Cornwall | TR11 5SJ



A beautifully situated three-bedroom detached bungalow offering views over the creekside village of Mylor Bridge. With three bedrooms, a family shower room & separate WC and bright living space, this bungalow offers much potential in a desired location.

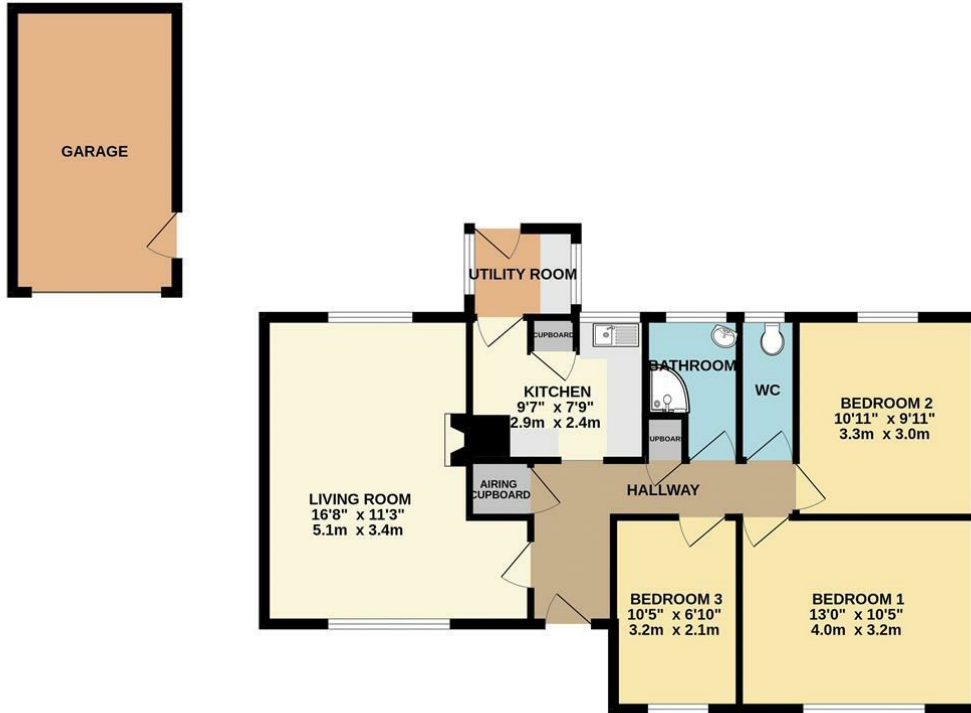
Springfield Park

£385,000 Freehold



- Lovely Creekside Village Location
- No Chain
- Family shower room and separate WC
- Bright Living Space
- Driveway and single garage
- Three Bedrooms
- Kitchen and separate utility porch
- Ample storage

GROUND FLOOR
900 sq.ft. (83.6 sq.m.) approx.



TOTAL FLOOR AREA : 900 sq.ft. (83.6 sq.m.) approx.
 Whilst every attempt has been made to ensure the accuracy of the floorplan contained here, measurements of doors, windows, rooms and any other items are approximate and no responsibility is taken for any error, omission or mis-statement. This plan is for illustrative purposes only and should be used as such by any prospective purchaser. The services, systems and appliances shown have not been tested and no guarantee as to their operability or efficiency can be given.
 Made with Metropix ©2024

Council Tax Band D
Local Authority

Agents Note: Whilst every care has been taken to prepare these particulars, they are for guidance purposes only. All measurements are approximate and are for general guidance purposes only and whilst every care has been taken to ensure their accuracy, they should not be relied upon and potential buyers/tenants are advised to recheck the measurements.

Energy Efficiency Rating		
	Current	Potential
Very energy efficient - lower running costs		
(92 plus) A		
(81-91) B		
(69-80) C		
(55-68) D		
(39-54) E		
(21-38) F		
(1-20) G		
Not energy efficient - higher running costs		
England & Wales	EU Directive 2002/91/EC	

31 Lemon Street
Truro
Cornwall
TR1 2LS



CLIVEPEARCE
Now you're moving

hello@clivepearceproperty.com

01872 272622

www.clivepearceproperty.com