



Sunnyside, NW2

£999,950

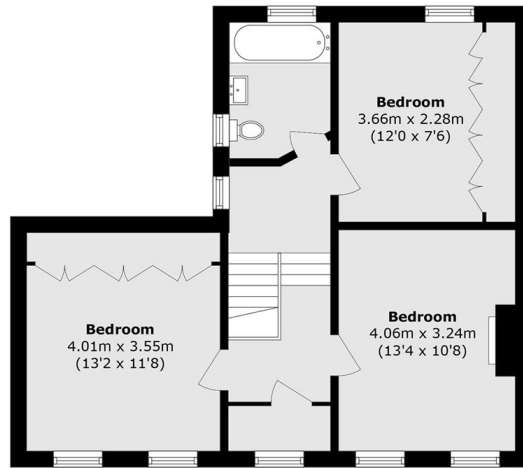
An exciting opportunity to acquire a three bedroom, double fronted Victorian end of terrace home with side garage offering excellent extension potential (STPP). The property requires full modernisation, making it an ideal project to create the perfect family home and it will be sold with no onward chain.

Sunnyside is situated between Hampstead and Golders Green in the residential area of Childs Hill. Golders Green is within walking distance providing a wide range of transport, shops and amenities.

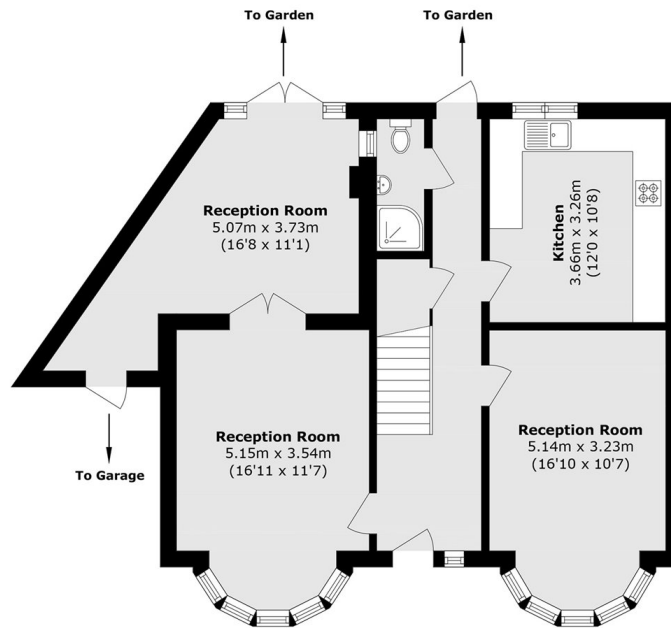
Features

- Three Bedrooms
- Double Fronted House
- Garage
- Two Bathrooms
- Corner Plot
- No Onward Chain

Sunnyside, London, NW2



First Floor



Ground Floor

Total area (approx.): 135.5 sq. m (1458.5 sq. ft)