



**Horseshoe Cottage, Bath Street, Chard TA20 2ET**

**welcome to**

**Horseshoe Cottage, Bath Street, Chard**

A very well presented two bedroom mid terraced cottage conveniently situated for town centre amenities. The property, which is being sold with the benefit of NO ONWARD CHAIN, would be a great investment opportunity or first time buy. Viewing recommended!



## Ground Floor

### Entrance Hall

Front aspect double glazed window. Double glazed door to front.

### Cloakroom

Fitted with a WC and wash hand basin.

### Living Room

13' 11" x 11' 2" ( 4.24m x 3.40m )

Front aspect double glazed window. Laminate floor. TV point. Radiator.

### Kitchen / Diner

13' 11" x 11' 5" ( 4.24m x 3.48m )

Front aspect double glazed window. Fitted base and wall units. Part tiled. Space for cooker, fridge/freezer and washing machine. Combi boiler.

## First Floor

### Bedroom One

13' 10" x 11' 5" ( 4.22m x 3.48m )

Front aspect double glazed window.

### Bedroom Two

13' 10" x 7' ( 4.22m x 2.13m )

Front aspect double glazed window.

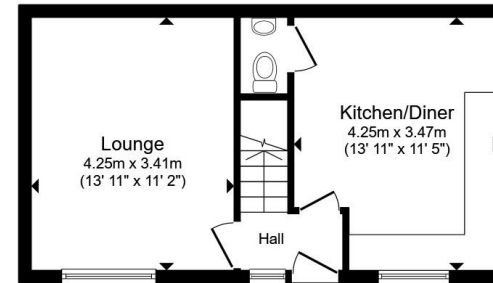
### Bathroom

10' 8" x 7' 1" ( 3.25m x 2.16m )

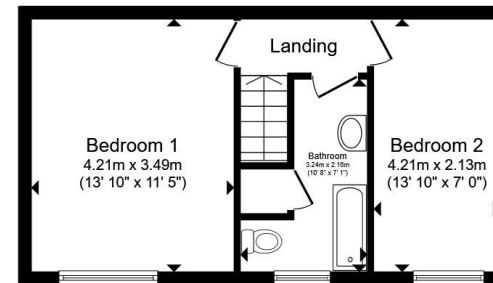
Front aspect double glazed window. Fitted with a suite comprising a panelled bath, wash hand basin and WC. Radiator.

### Outside

There is a front garden, which is enclosed within fencing and laid to paving. Garden shed.



Ground Floor



First Floor

Total floor area 67.0 m<sup>2</sup> (721 sq.ft.) approx

This floor plan is for illustrative purposes only. It is not drawn to scale. Any measurements, floor areas (including any total floor area), openings and orientation are approximate. No details are guaranteed, they cannot be relied upon for any purpose and they do not form part of any agreement. No liability is taken for any error, omission or misstatement. A party must rely upon its own inspection(s). Powered by [www.propertybox.io](http://www.propertybox.io)



**view this property online** [fox-and-sons.co.uk/Property/CRK106570](http://fox-and-sons.co.uk/Property/CRK106570)



welcome to

## Horseshoe Cottage, Bath Street, Chard

- Mid Terraced Cottage
- Two Bedrooms
- Enclosed Paved Front Garden
- Conveniently Situated For Town Centre Amenities
- NO ONWARD CHAIN!

Tenure: Freehold EPC Rating: C  
Council Tax Band: B

**£175,000**



Please note the marker reflects the postcode not the actual property

**view this property online** [fox-and-sons.co.uk/Property/CRK106570](https://fox-and-sons.co.uk/Property/CRK106570)



Property Ref:  
CRK106570 - 0002

1. MONEY LAUNDERING REGULATIONS Intending purchasers will be asked to produce identification documentation at a later stage and we would ask for your co-operation in order that there is no delay in agreeing the sale. 2. These particulars do not constitute part or all of an offer or contract. 3. The measurements indicated are supplied for guidance only and as such must be considered incorrect. Potential buyers are advised to recheck measurements before committing to any expense. 4. We have not tested any apparatus, equipment, fixtures or services and it is in the buyers interest to check the working condition of any appliances. 5. Where an EPC, or a Home Report (Scotland only) is held for this property, it is available for inspection at the branch by appointment. If you require a printed version of a Home Report, you will need to pay a reasonable production charge reflecting printing and other costs. 6. We are not able to offer an opinion either written or verbal on the content of these reports and this must be obtained from your legal representative. 7. Whilst we take care in preparing these reports, a buyer should ensure that his/her legal representative confirms as soon as possible all matters relating to title including the extent and boundaries of the property and other important matters before exchange of contracts.

Fox & Sons is a trading name of Sequence (UK) Limited which is registered in England and Wales under company number 4268443, Registered Office is Cumbria House, 16-20 Hockliffe Street, Leighton Buzzard, Bedfordshire, LU7 1GN. VAT Registration Number is 500 2481 05.

  
fox & sons



**01460 73421**



[Crewkerne@fox-and-sons.co.uk](mailto:Crewkerne@fox-and-sons.co.uk)



1-3 Market Square, CREWKERNE, Somerset,  
TA18 7LE



**fox-and-sons.co.uk**