



58 Windsor Road, Salisbury, Wiltshire, SP2 7DX

£350,000 Freehold

## About The Property

Situated on the edge of the city centre, within walking distance of all the facilities and railway station, a spacious house of multiple occupation with 6 letting flatlets/rooms and the possibility of another. Gas central heating runs throughout the building and all the windows are double glazed. On the ground floor is a small utility space with washing machine. Otherwise on the ground floor, both flat 1 and flat 6 have a sitting room/kitchen, shower room and bedroom. On the second floor are rooms 3 and 4 which have a bedroom/sitting room/kitchen and a shower room. Number 2 has one room with a bathroom off and this is where the gas boiler is housed. On the top floor is a further flatlet with sitting/kitchen, bedroom and shower room.

Outside there is a small garden and covered area for sitting and parking for 3/4 vehicles.

Vacant possession will be offered.



6



5

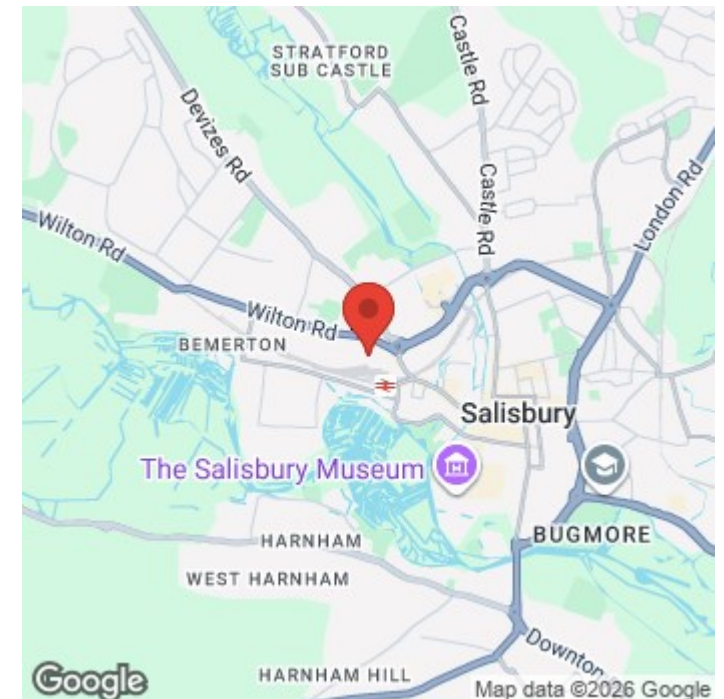


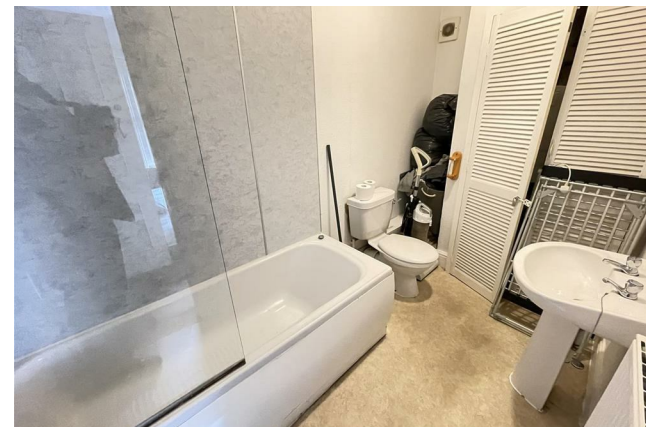
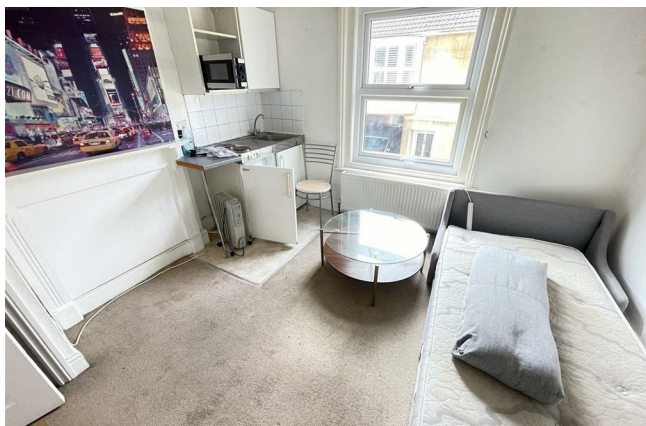
0



1822.10 sq ft

- Rarely Available
- HMO
- Six Bedrooms
- Parking For 3/4 Vehicles
- c £36,000 per annum
- End of Cul-De-Sac
- Easy Walk To City
- Close to Station
- Gas Central Heating
- No Onward Chain





## Further Information

Local authority: Wiltshire Council

Council Tax: D - £2777.59 (2026/2027)

Tenure: Freehold

EPC: See online

Services: Mains gas, electricity, water and drainage.

Heating: Gas heating with radiators

Directions: From our office in Castle Street proceed north and turn left onto the ring road. At St Pauls roundabout turn left and then take the first right into Windsor Road where 58 will be seen at the end on the right hand side.

What3words: ///gained.global.actual

