



smarthomes

Arkley Grove

Hall Green, Birmingham

- A Well Presented Mid Terrace Property
- Two Double Bedrooms
- Four Piece Family Bathroom
- South Facing Rear Garden
- Cul-De-Sac Location
- No Upward Chain

OIRO £200,000

Current EPC Rating 66 (D)
Current Council Tax Band A





Property Description

A well presented two double bedroom mid-terrace property situated in a cul-de-sac location and briefly affording lounge, kitchen, four piece family bathroom, south facing rear garden and off-road parking. No upward chain.

Tenure

We are advised by the vendor that the property is freehold, but are awaiting confirmation from the vendor's solicitor. We would advise all interested parties to obtain verification through their own solicitor or legal representative.

EPC supplied by vendor
Current council tax band – A



Rooms & Measurements

Entrance Hall

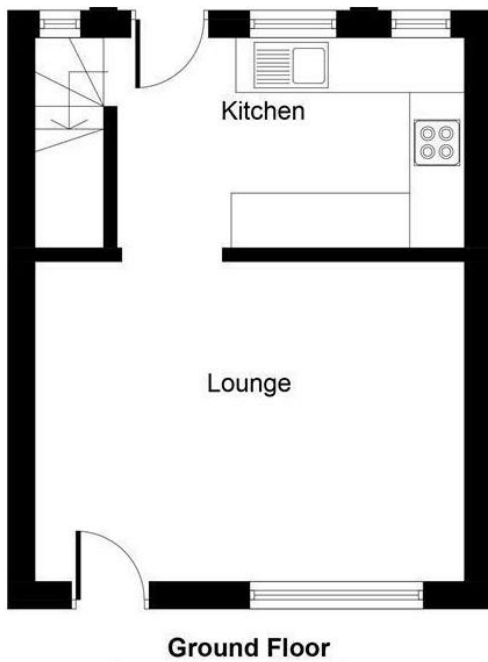
Lounge to Front
4m x 4.2m (into bay) (13'1" x 13'9")

Kitchen to Rear
3.7m x 2.3m (12'1" x 7'6")

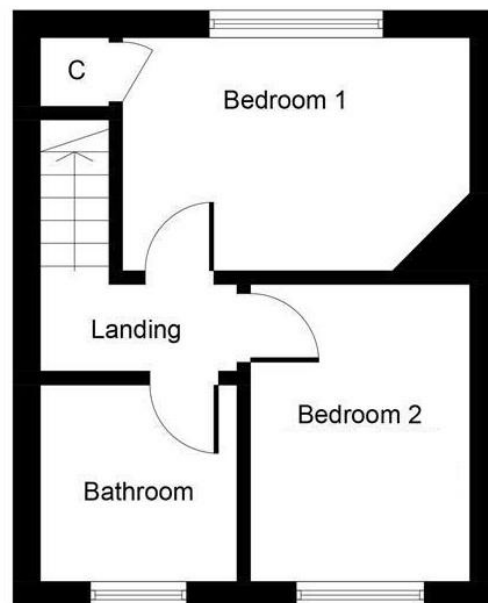
Bedroom One to Rear
3.8m x 2.5m (12'5" x 8'2")

Bedroom Two to Front
3.3m x 2.3m (10'9" x 7'6")

Four Piece Family Bathroom to Front
2.7m x 2.2m (8'10" x 7'2")



Ground Floor



First Floor

316 Stratford Road
Shirley
Solihull
B90 3DN

www.smart-homes.co.uk
0121 744 4144

Agents Note: Whilst every care has been taken to prepare these particulars, they are for guidance purposes only. We believe all information to be correct from the day of marketing however, we advise and recommend that your conveyancer and or surveyor verifies all information supplied. All measurements are approximate and are for general guidance purposes only and whilst every care has been taken to ensure their accuracy, they should not be relied upon and potential buyers are advised to recheck the measurements.