



📍 Maple House Manor Close, Urchfont, Wiltshire, SN10 4RE

🔗 Offers In Excess Of £800,000

An outstanding detached bungalow, built in 2018 and beautifully appointed to an exemplary specification throughout.

- Stunning Contemporary Bungalow
- High Specification With Underfloor Heating
- Three Double Bedrooms
- Stylish Modern Kitchen
- Fabulous Orangery/Garden Room Added in 2022
- Luxurious En Suite & Family Bathroom
- Double Garage & Driveway Parking
- Beautiful Private Gardens
- Large Utility & Cloakroom
- Exceptional Village With Amenities

🏠 Freehold

🏠 EPC Rating D



A truly exceptional three double bedroom single-storey home, built in 2018 by the highly regarded local developer Qdos to a high specification, and benefiting from underfloor heating, a double garage, and immaculately maintained private gardens.

This superb bungalow is set just a stone's throw from the village Green in a lovely tucked away position. Inside, a welcoming entrance hall with wood effect flooring leads into a marvellous 30ft x 28ft open plan kitchen/living/dining room. The kitchen has quartz worktops, and quality appliances to include a double oven, full height fridge and freezer and a dishwasher. The sitting room features a log burner and has a large opening into a triple aspect orangery/garden room with an atrium skylight and sliding doors to the rear garden. Also set off the kitchen is a large utility room and an additional WC. There are three double bedrooms and a luxurious en suite family bathroom. The principal bedroom enjoys bespoke fitted wardrobes and a stylish en suite shower room.

Outside, there is a long driveway up to the bungalow flanked by well tended mature gardens, leading up to parking for 3-4 cars and the double garage with light, power and a door back to the utility room. An EV charger is a welcome feature for anyone with an electric car.

There are beautiful landscaped gardens to the side and rear with well stocked borders, colourful borders and an extended Indian sandstone patio that provides a number of secluded seating areas.

#### **Situation**

Urchfont has a good range of facilities for a village of its size including a Community Shop, vibrant Village Hall, thriving Primary School and Church together with a dentists' surgery. Bus services connect the village to adjoining communities and Urchfont has a community bus which travels into Devizes for market day as well as occasional outings to Bath and Salisbury. It also helps with lifts to some village activities.. There are 2 village Greens and a duck pond. On the first weekend in May there is a 3 day scarecrow festival which attracts many thousands of visitors and raises about £20,000 p.a for mainly local causes. Dauntsey's and Market Lavington Secondary School are 2 popular schools that can be found in the nearby villages. Mainline railway stations are located closeby at Pewsey and Westbury.

#### **Property Information**

Services: LPG heating with under floor heating. Mains water, drainage and electricity are all connected.  
EV charging point installed.  
Council Tax: Band F



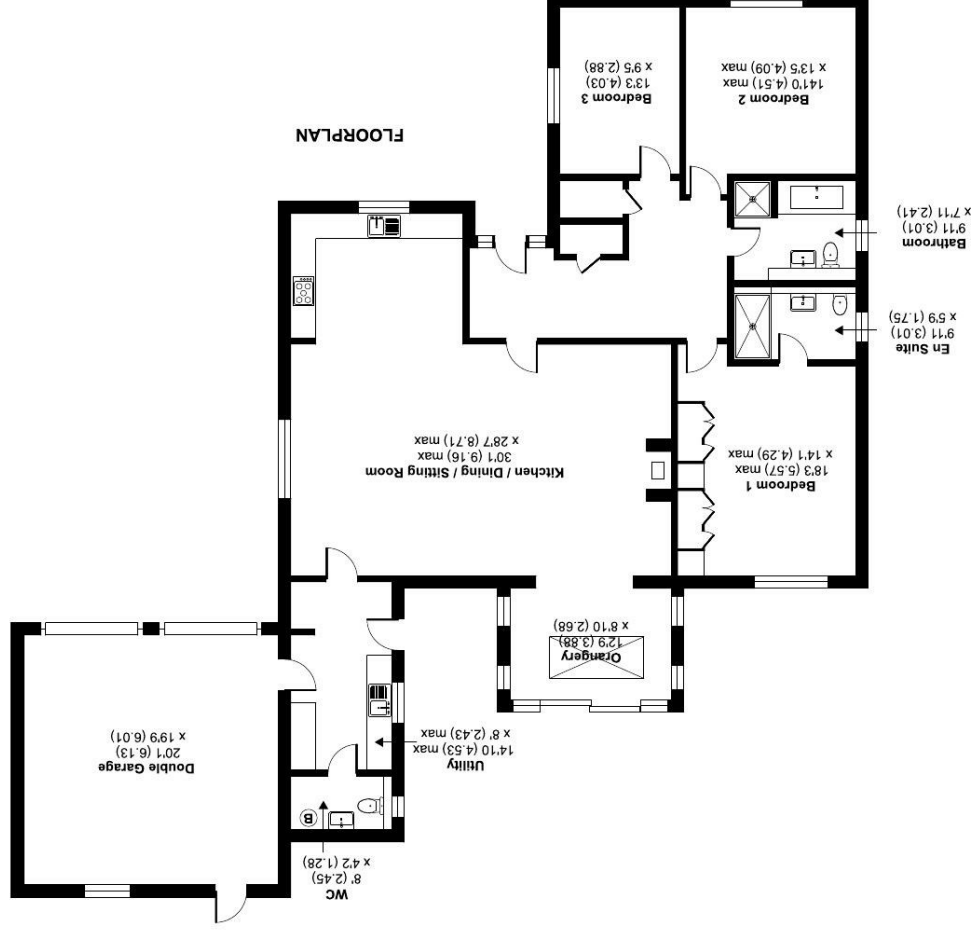
# Manor Close, Urchfont, Devizes, SN10

Approximate Area = 1920 sq ft / 178.3 sq m

Garage = 397 sq ft / 36.8 sq m

Total = 2317 sq ft / 215.1 sq m

For identification only - Not to scale



Floor plan produced in accordance with RICS Property Measurement 2nd Edition, incorporating International Property Measurement Standards (IPMS2 Residential). © nchecomm 2026. Produced for Strakers. REF: 1449388

Disclaimer These particulars, whilst believed to be accurate are set out as a general outline only for guidance and do not constitute any part of an offer or contract. Intending purchasers should not rely on them as statements of representation of fact, but must satisfy themselves by inspection or otherwise as to their accuracy. No person in this firm's employment has the authority to make or give any representation or warranty in respect of the property. All measurements and distances are approximate only. Your home is at risk if you do not keep up repayments on a mortgage or other loan secured on it.