



## CORTIS ROAD, SW15

£475,000

Split level maisonette  
Three bedrooms  
Two bathrooms  
Stylishly presented  
Private West Facing garden  
Putney Heath

@marshandparsons  
marshandparsons.co.uk

MARSH &  
PARSONS

# ABOUT THE PROPERTY

Marsh & Parsons are excited to bring to the market this stunning split level three bedroom maisonette in Putney Heath.

Arranged over two floors, the property is well-proportioned layout, it has three double bedrooms, two bathrooms (one en-suite), a semi-open plan living with modern kitchen, dining and living room. The property benefits from a private rear garden, providing valuable outdoor space for entertaining and relaxing.

Ideally situated in SW15, close to the green spaces of Putney Heath and Roehampton Playing Field. The

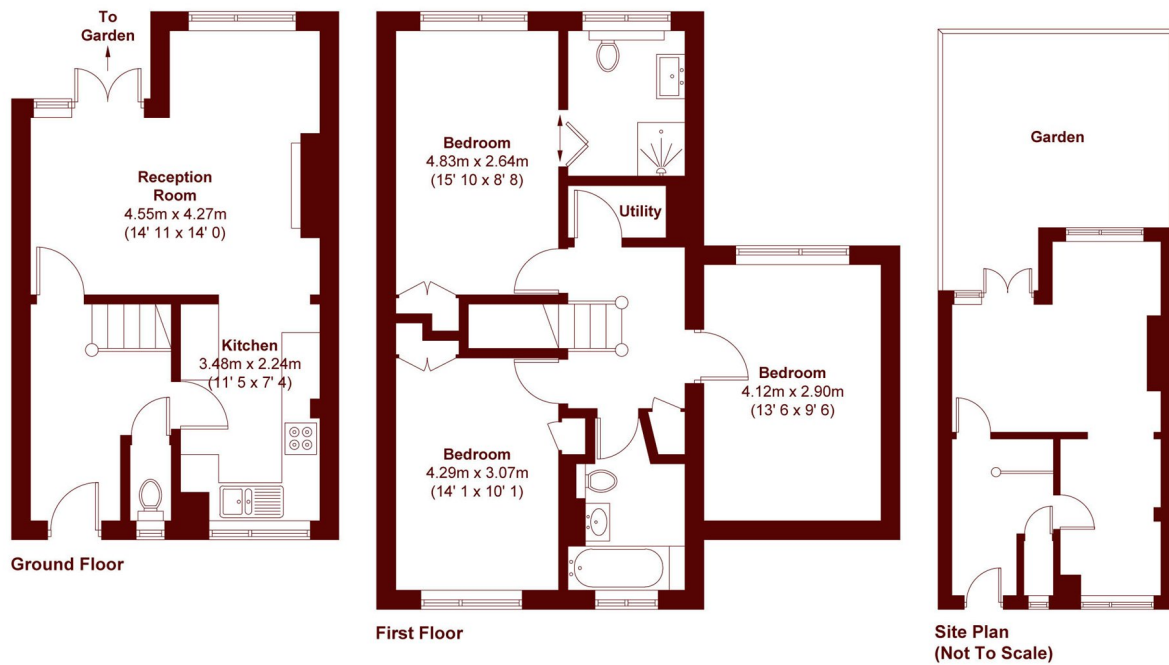








# STEP INSIDE CORTIS ROAD



APPROX. GROSS INTERNAL FLOOR AREA = 959 SQFT / 89.1 SQM

**Barnes & East Sheen**  
020 8563 8333

Energy Rating: C We aim to make our particulars both accurate and reliable. However, they are not guaranteed; nor do they form part of an offer or contract. If you require clarification on any points then please contact us, especially if you're traveling some distance to view. Please note that appliances and heating systems have not been tested and therefore no warranties can be given as to their good working order

**MARSH &  
PARSONS**