

10 Marsh Wall London

Featuring stunning views, this fully furnished two bedroom apartment is situated in Landmark Pinnacle, set to be one of the tallest residential buildings in Europe. This luxury apartment will be fully furnished and offers the epitome of city living.

The apartment comprises of two bedrooms, two bathrooms and open-plan reception with modern integrated kitchen for entertaining all those important guests. Residents enjoy a 5-star experience with the following amenities available for the resident's exclusive use: a gym, cinema room, swimming pool, resident lounge, a residents business centre and meetings rooms. Set against the iconic backdrop of the Canary Wharf peninsula, Landmark Pinnacle is the tallest residential address in Western Europe, soaring 239 metres into the sky above London's most affluent and dynamic business district.

£900 Per Week

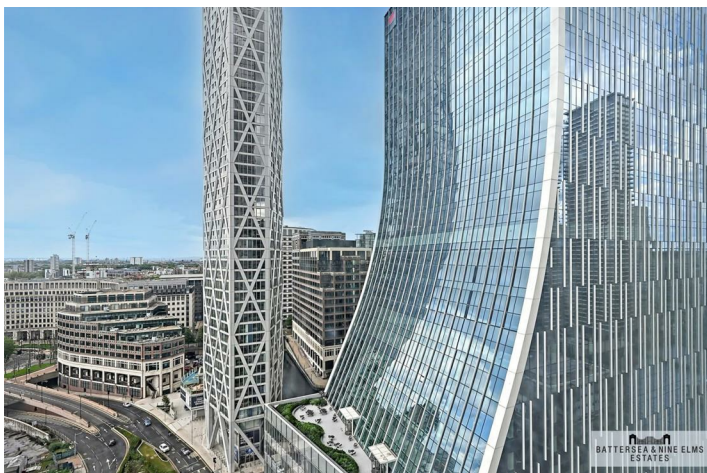
10 Marsh Wall London



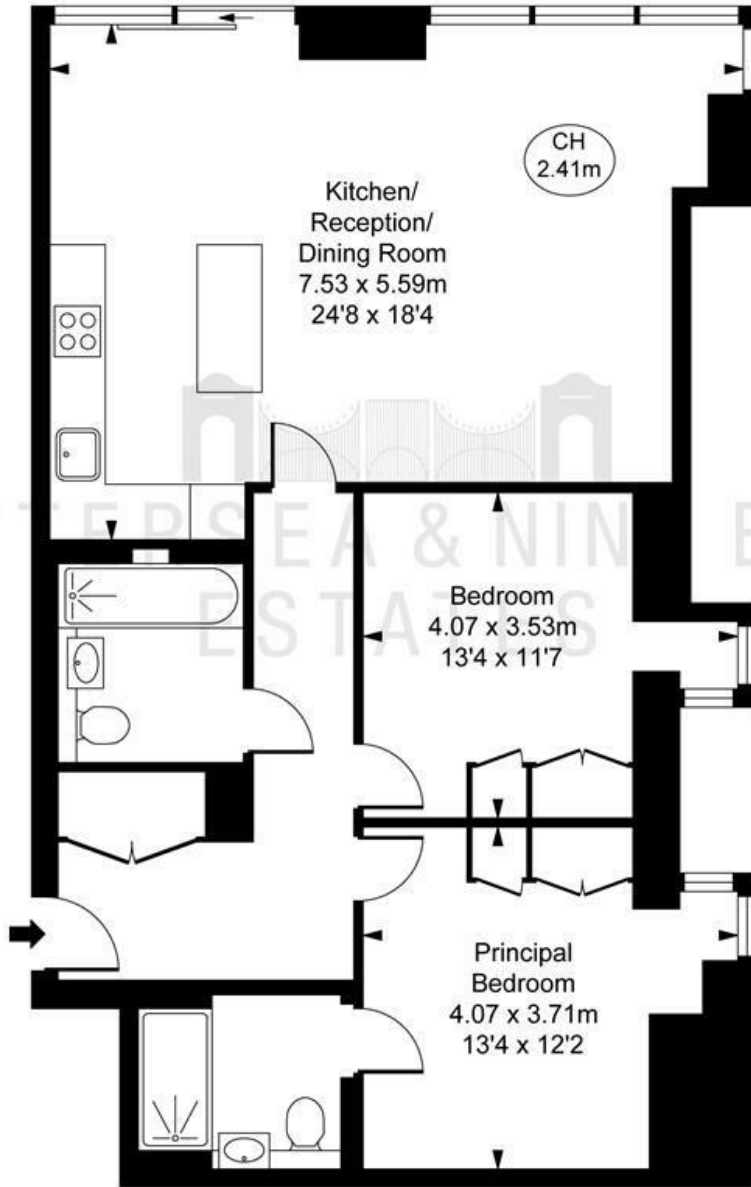
- Fully furnished
- 24 Hour concierge
- Two bathrooms
- Residents gym
- Two double bedrooms
- Business Centre



[Directions](#)



Landmark Pinnacle,
Marsh Wall, E14
Approximate Gross Internal Area
81.05 sq m / 872 sq ft
(CH = Ceiling Heights)



This plan is not to scale. It is for guidance and not for valuation purposes.
All measurements and areas are approximate only, and have been prepared in accordance with the current edition of the RiCS Code of Measuring Practice.
© Fulham Performance

These particulars, whilst believed to be accurate are set out as a general outline only for guidance and do not constitute any part of an offer or contract. Intending purchasers should not rely on them as statements of representation of fact, but must satisfy themselves by inspection or otherwise as to their accuracy. No person in this firm's employment has the authority to make or give any representation or warranty in respect of the property.

Energy Efficiency Rating	Current	Potential
Very energy efficient - lower running costs (92 plus) A		
(81-91) B		
(69-80) C		
(55-68) D		
(39-54) E		
(21-38) F		
(1-20) G		
Not energy efficient - higher running costs		
England & Wales	84	84
EU Directive 2002/91/EC		

Environmental Impact (CO ₂) Rating	Current	Potential
Very environmentally friendly - lower CO ₂ emissions (92 plus) A		
(81-91) B		
(69-80) C		
(55-68) D		
(39-54) E		
(21-38) F		
(1-20) G		
Not environmentally friendly - higher CO ₂ emissions		
England & Wales		
EU Directive 2002/91/EC		