



St Michaels House Scaur Lane, Penrith, CA10 1AH

Guide price £575,000



Utility Room	8'2" x 4'11" (2.49 x 1.52)
An incredibly useful space this utility room has fantastic storage cupboards and is perfect doubling as a boot room. There is plumbing for a washing machine and a granite worksurface with a Belfast sink unit over. Double glazed window to the side elevation and door leading out to the garden. Underfloor heating with engineered oak flooring which is compatible.	
Entrance Hall	15'7" x 13'5" (4.76 x 4.11)
Front door leads into the grand entrance hall. There is a full floor to ceiling glass façade which allows natural light to fill the area. At the far end are bi-folding doors leading to the rear garden patio. A handsome staircase leads up to the first floor landing with attractive glass stair panels. There is underfloor heating and engineered oak flooring which is compatible. Open to the ground floor lounge. There is an understairs storage cupboard and an internal door to the integral garage.	
Lounge	15'4" x 14'4" (4.68 x 4.39)
The lounge is bright and spacious with double glazed windows to the front elevation. There is an attractive electric stove and underfloor heating. Engineered oak flooring which is compatible. Recessed ceiling lights.	
Kitchen Diner	15'9" x 14'11" (4.81 x 4.55)
Bespoke carpenter made Neptune kitchen with Corian worksurfaces and features a central island with gneiss worksurface and integrated appliances including: A Stoves Induction electric hob, triple ovens and extractor. Integrated dishwasher with space for a free standing fridge/ freezer. Belfast sink unit with hot and cold taps. Oak joiner made cream coloured wall and base units. Two double glazed windows to rear elevation with double glazed Bi fold doors onto rear courtyard. Underfloor heating with engineered oak flooring which is compatible. Recessed ceiling lights.	
Ground Floor W/C	
Comprises a low level w/c and a sink unit. Opaque double glazed window to the front elevation. Storage cupboard. Underfloor heating with engineered oak flooring which is compatible.	
Stairs / Landing	
A handsome staircase with glass panelling leads up to the first floor landing. There are high vaulted ceilings and glass façade gives a wonderful outlook onto the North Pennine fells. Three double glazed windows. Fitted carpet throughout. Radiator.	
Principal Bedroom	15'3" x 9'11" (4.67 x 3.04)
A stunning principal bedroom suite which has it all. At the near end a door leads into the en-suite shower room and at the far end a door leads into the walk-in wardrobe. The high vaulted ceiling and exposed beams and trusses are lovely features and the room is bright and airy with a Juliet balcony and double glazed window. Vertical radiator. Fitted carpet.	
Walk-In Wardrobe	6'11" x 5'9" (2.11 x 1.77)
A fantastic space which is currently used as a walk in wardrobe. This area could make a small home office or dressing room. There are fitted wardrobe units with hanging rails and shelving. Double glazed window to the rear elevation overlooking the garden. Fitted carpet. Radiator.	
En-Suite Shower Room	7'8" x 5'6" (2.34 x 1.68)
A fine en-suite shower room which comprises: large shower cubicle containing a mains shower unit, a vanity sink unit with drawers under and a low level w/c. There is a heated towel rail. Vinyl flooring. Double glazed window unit. Above there are attractive, exposed beams.	
Bedroom Two	12'10" x 10'9" (3.92 x 3.30)
Currently used as a work space / bedroom, the second bedroom is a brilliant double with dual aspect double glazed windows and fitted carpet. Vertical radiator. Exposed beams and trusses.	
Reception Room	12'5" x 10'8" (3.80 x 3.26)
A wonderful addition offering versatility. The first floor reception room has a spectacular outlook with a Juliet balcony giving wonderful North Pennine fell views. There are attractive, exposed beams and trusses. Vertical radiator. Fireplace housing an electric stove. The room leads on to the second bedroom and would be ideal for guest quarters or dependent relatives. Fitted carpet.	
Bedroom Three	10'9" x 8'10" (3.29 x 2.70)
A comfortable double bedroom with double glazed window to the front elevation. Fitted carpet. Vertical radiator. Vaulted ceiling with attractive, exposed beams.	
Bedroom Four	11'2" x 7'9" (3.41 x 2.38)
Currently used as a study / bedroom, the fourth bedroom is a brilliant double with dual aspect double glazed windows and fitted carpet. Radiator. Exposed beams.	
Bathroom	10'6" x 5'6" (3.22 x 1.68)
A fine family bathroom, which comprises: panelled bath, shower cubicle containing a mains shower unit, a vanity sink unit with drawers under and a low level w/c. There is a heated towel rail. Vinyl flooring. Double glazed window unit. Above there are attractive, exposed beams and a Velux window.	
Garage	26'1" x 11'6" (7.97 x 3.53)
A fantastic integral double garage. Additionally it serves as an excellent space for extra storage or a workshop. There is power, lighting and water supply to the garage. To the front is an electric up and over door and a door to the rear giving access to the garden. The garage also houses the biomass boiler and has fitted units with a sink.	
Outside	
The property is beautifully maintained outside. To the front is a driveway offering plentiful private parking. There are sandstone flags laid and pathways around both sides of the house. There is an attractive stone wall which forms the boundary. To the rear is a garden laid to lawn with mature shrubs and flowers. There is a lovely central flagged courtyard which has great potential for the addition of an orangery, and a detached summerhouse / studio which is fully insulated and has electricity supply. There is a second shed which house the wood pellet hopper that feeds the biomass boiler and a third traditional shed for garden tool storage. The property occupies a generous sized plot which is also incredibly private and is South West facing.	
Services & Other Information	
Mains electricity, mains water and mains drainage. Biomass boiler providing domestic heating and hot water. Superfast Broadband is available. Solar Panels installed. The property has installed, an air ventilation system designed to self regulate fresh air at the ambient room temperature in every room. All doors, architraves and skirting boards throughout the home are made of solid oak.	
Please Note	
These particulars, whilst believed to be accurate, are set out for guidance only and do not constitute any part of an offer or contract - intending purchasers or tenants should not rely on them as statements or representations of fact but must satisfy themselves by inspection or otherwise as to their accuracy. No person in the employment of Lakes Estates has the authority to make or give any representation or warranty in relation to the property. All mention of appliances / fixtures and fittings in these details have not been tested and therefore cannot be guaranteed to be in working order.	
Anti-Money Laundering (AML) Checks; When your offer is accepted, we're legally required to verify your identity. This is carried out by a third-party company at the following costs: Buying in personal name: £40 (inc. VAT) Company purchase: £120 (inc. VAT) These fees are non-refundable, and the purchase cannot proceed until checks are complete.	

St Michaels House Scaur Lane

Penrith, CA10 1AH

Built in 2012 to an exacting standard, this impressive four-bedroom detached home is ideally located in the heart of the highly sought-after village of Lazonby. Extending to approximately 1,926 sq ft, the property is presented in immaculate condition throughout and combines modern efficiency with high-quality craftsmanship.

The home is exceptionally energy-efficient, benefitting from a biomass wood pellet boiler, solar panels, air ventilation system, and underfloor heating throughout the ground floor. The underfloor heating works perfectly with the engineered oak flooring, offering both durability and style.

At the heart of the home is a bespoke solid oak kitchen, complemented by bi-folding doors that open out to the garden, creating a bright and sociable space ideal for entertaining. A grand entrance hall with a striking floor-to-ceiling glass façade provides a stunning first impression.

The property offers reception rooms on both the ground and first floor, providing flexible living and relaxation spaces.

Upstairs, the principal bedroom suite is a true highlight, featuring a walk-in wardrobe and an elegant en-suite shower room, adding a touch of luxury and sophistication. There are three further well-proportioned bedrooms and a family bathroom.

Externally, the property continues to impress with ample parking, well-maintained lawns, and patio areas perfect for outdoor living. A fully insulated Garden Room offers excellent versatility, whether used as a home office, creative studio, or relaxation space.



- 4 Bed Detached Home Built in 2012
- Accommodation Spanning 1,926sq ft
- Much Sought After Village Location
- Found in Immaculate Condition Throughout
- Bespoke Solid Oak Kitchen
- 2 Bathrooms with Principal En-Suite & Downstairs Cloakroom
- Plentiful Private Parking & Large Garage
- Beautifully Maintained Garden & Patio
- Fully Insulated Versatile Garden Room
- Superfast Broadband Available





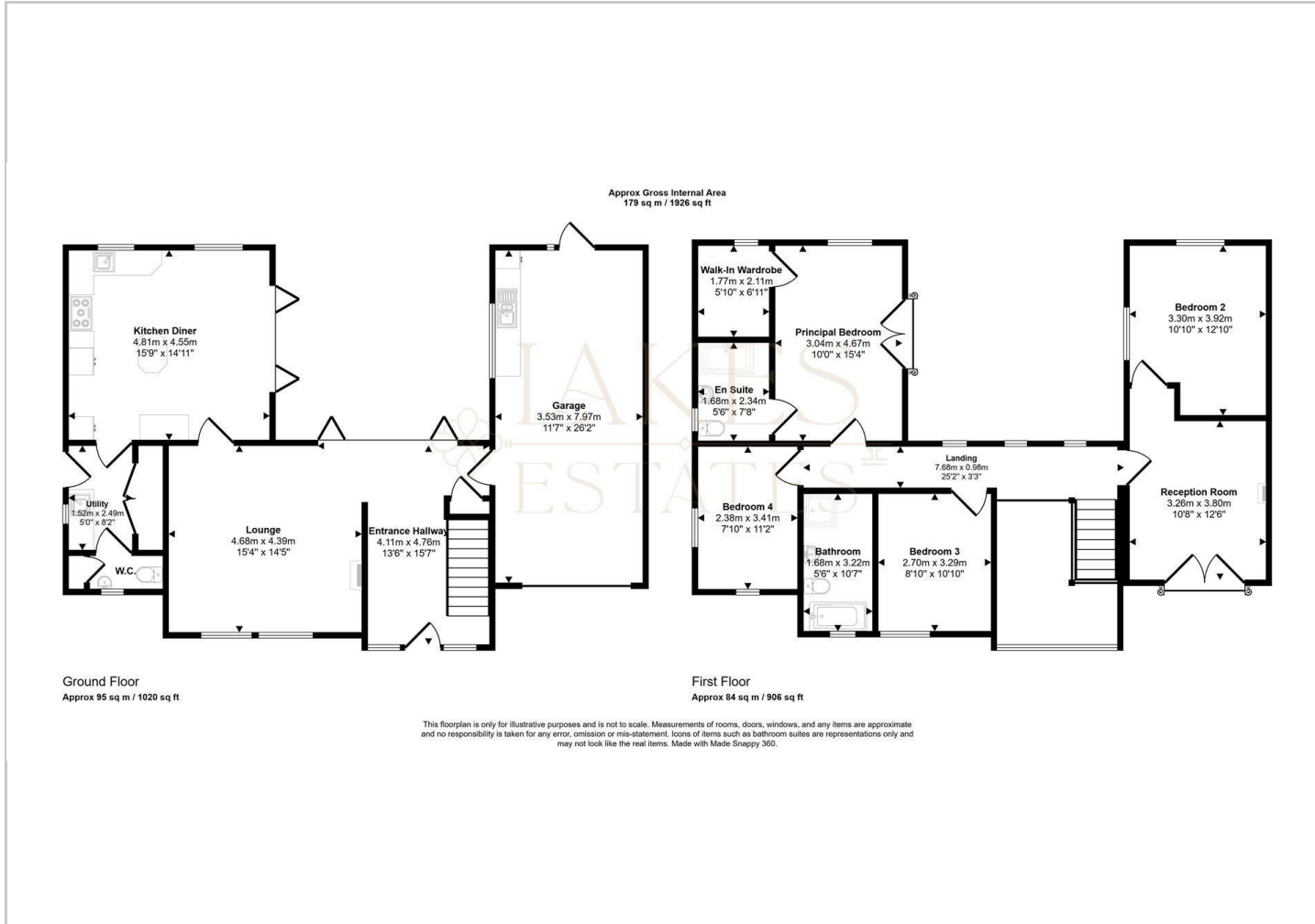
Directions

From Penrith, head south-west on Corn Market/ A592 towards Great Dockray. At the roundabout, take the 2nd exit onto Cromwell Road/ A592. At the next roundabout, take the 2nd exit onto Brunswick Road/ A592. Brunswick Road/ A592 turns left and becomes Duke Street/ A6. Turn right onto Salkeld Road, turning left and right onto B6413, turning right onto Scaur Lane. The property will be on the right hand side

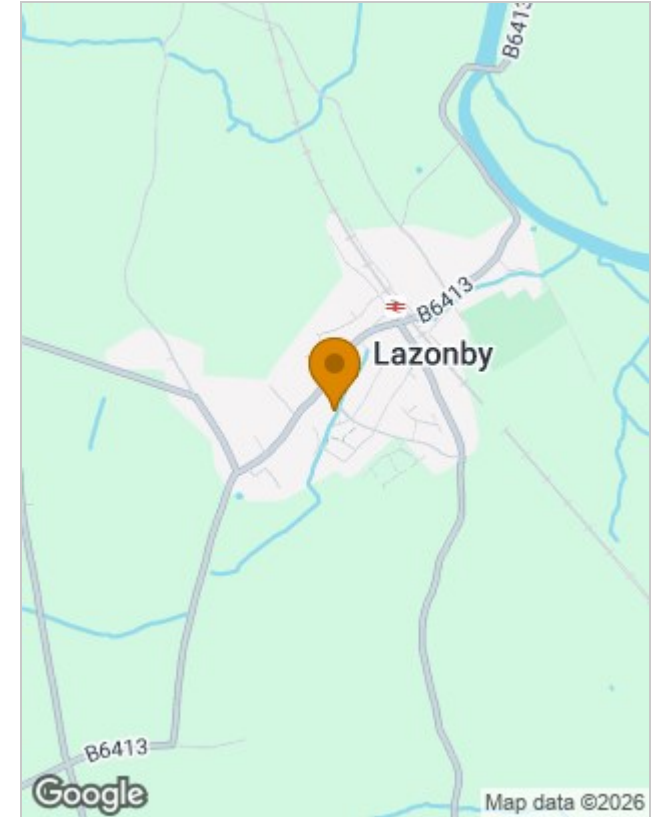




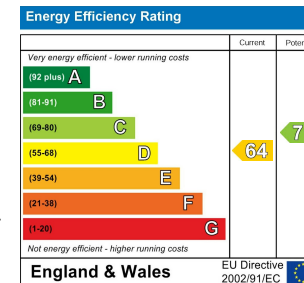
Floor Plans



Location Map



Energy Performance Graph



Viewing

Please contact our Lakes Estates Office on 01768 639300 if you wish to arrange a viewing appointment for this property or require further information.

The particulars are set out as a general outline only for the guidance of intended purchasers or lessees, and do not constitute, any part of a contract. Nothing in these particulars shall be deemed to be a statement that the property is in good structural condition or otherwise nor that any of the services, appliances, equipment or facilities are in good working order. Purchasers should satisfy themselves of this prior to purchasing.