



Jersey Road

offers over £100,000

- Sought-after location
- Modern kitchen
- Close to walking routes
- Three bedrooms
- Feature Fireplace
- EPC Rating: C



 3  1  1



About the property

This charming and well-maintained three-bedroom terraced house in a sought-after location offers a modern kitchen, inviting reception room, and a large, tiered garden, providing an ideal home for first-time buyers and families seeking a tranquil lifestyle with easy access to green spaces and outdoor

- Sought-after location
- Modern kitchen
- Close to walking routes
- Three bedrooms
- Feature Fireplace





Accommodation

On the market is a charming, well-maintained terraced house in a sought-after location. This property, in good condition, is ideal for first-time buyers and families alike. The house boasts three bedrooms, two of which are generous doubles and one a cosy single. Each bedroom presents a calm and serene space, perfect for unwinding after a long day.

At the heart of the home is a modern, tastefully designed kitchen. The kitchen offers ample space for cooking and dining, creating an inviting area for family meals or entertaining guests.

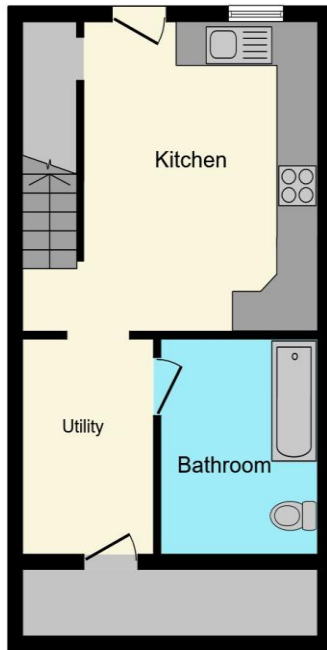
The property features a single reception room, a warm and inviting space with a fireplace and a dual aspect view. It serves as a comfortable and spacious area for family gatherings or relaxing evenings.

The standout feature of this property is the large, tiered garden. This outdoor area provides a perfect space for children to play or for adults to relax and enjoy the gorgeous views of the surrounding green spaces.

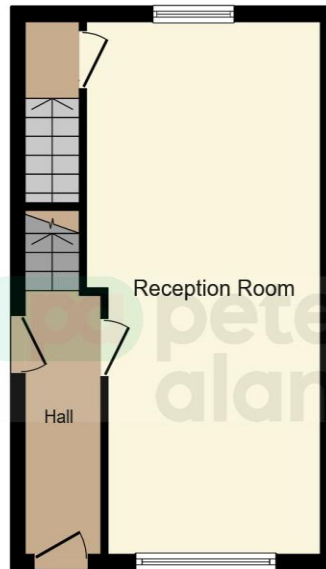
Located in an area renowned for its green spaces, walking and cycling routes, this terraced house offers not just a home, but a lifestyle. Enjoy the benefits of living in a location with easy access to outdoor activities, and the tranquillity that comes with it.

This property is an excellent opportunity for those looking for a home in a fantastic location, with ample living space and an impressive garden.

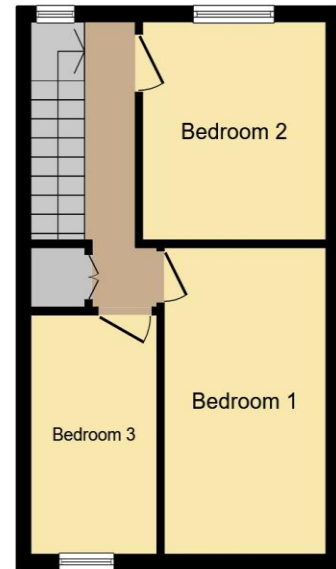
Floorplan



Lower Ground Floor



Ground Floor



First Floor

This floor plan is for illustrative purposes only. It is not drawn to scale. Any measurements, floor areas (including any total floor area), openings and orientation are approximate. No details are guaranteed, they cannot be relied upon for any purpose and they do not form part of any agreement. No liability is taken for any error, omission or misstatement. A party must rely upon its own inspection(s). Powered by www.focalagent.com

Important Information

Note while we endeavour to make our sales details accurate and reliable, if there is any point which is of particular interest to you, please contact the office and we will be pleased to confirm the position for you. We have not personally tested any apparatus, equipment, fixtures, fittings or services and cannot verify they are in working order or fit for their purposes. Nothing in these particulars is intended to indicate that carpets or curtains, furnishings or fittings, electrical goods (whether wired or not). Gas fires or light fittings or any other fixtures not expressly included form part of the property offered for sale. This computer generated Floorplan, if applicable, is intended as a general guide to the layout and design of the property. It is not to scale and should not be relied upon for dimensions. Tenure: We cannot confirm the tenure of the property as we have not had access to the legal documents. The buyer is advised to obtain verification from their solicitor or surveyor.

Peter Alan Limited is registered in England and Wales under company number 2073153, Registered Office is Cumbria House, 16-20 Hockliffe Street, Leighton Buzzard, Bedfordshire, LU7 1GN. VAT Registration Number is 500 2481 05. For activities relating to regulated mortgages and non-investment insurance contracts, Peter Alan Limited is an appointed representative of Connells Limited which is authorised and regulated by the Financial Conduct Authority. Connells Limited's Financial Services Register number is 302221. Most buy-to-let