



Old Kent Road, SE1

£325,000

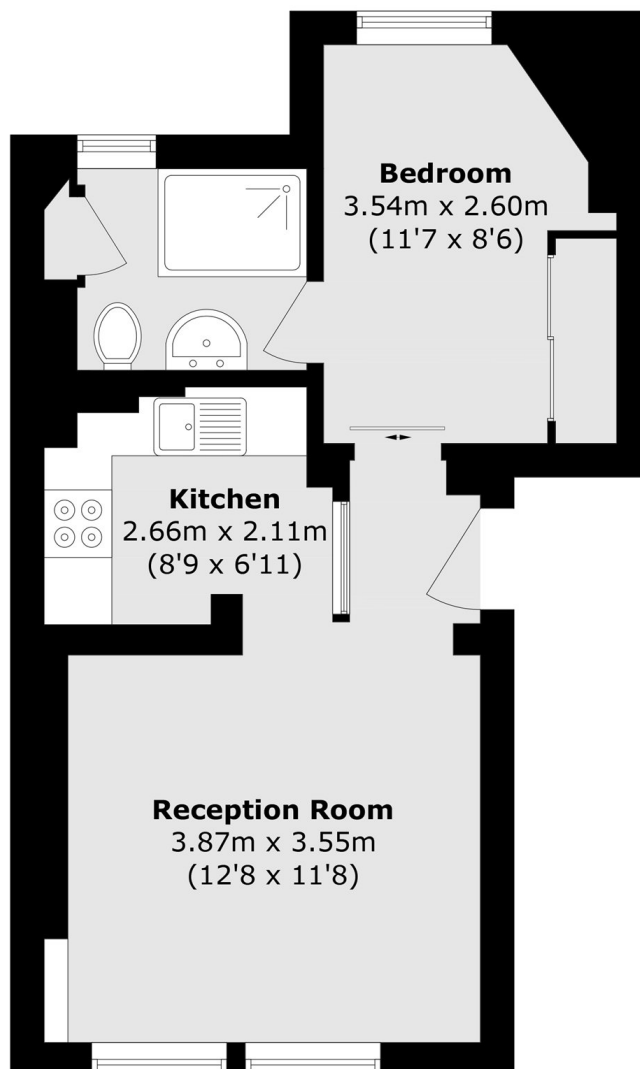
An immaculately presented top floor flat in an attractive Victorian Mansion block, with hard wood floors, a generous living room, fully fitted modern kitchen, double bedroom with ample storage and a smart en-suite bathroom.

Under a mile from Borough and Elephant & Castle Stations (Zone 1) with access to the Northern Line & Bakerloo Line. There are also great bus routes into Central London and numerous amenities on your doorstep.

Features

Victorian Mansion Flat
One Double Bedroom
High Ceilings & Large Windows
Communal Roof Terrace
110 Year Lease

Old Kent Road, London, SE1



Total area (approx.): 35.8 sq. m (385.3 sq. ft)