



Minford Gardens, West Kensington, W14
£1,870 pcm

Minford Gardens, West Kensington, W14

This stylish one double bedroom flat boasts size, quality and location all in one. The property is located on a quiet tree lined street moments away from Shepherds Bush Green, Shepherds Bush station (CENTRAL LINE) and Shepherds Bush Market (HAMMERSMITH&CITY LINE). With regards to the property itself, the living room and bedroom are of a very good size. The bedroom has ample storage. The kitchen is separate, with all appliances including washing machine. The décor is neutral throughout with a combination of wooden floors and carpets. The area is very vibrant, with many trendy bars, restaurants, cafes and shops. There is a big supermarket on your door step as well as a cinema complex, gym, and not forgetting the Westfield Shopping Centre. Easy access to the A40/M40 making travelling no hassle at all.





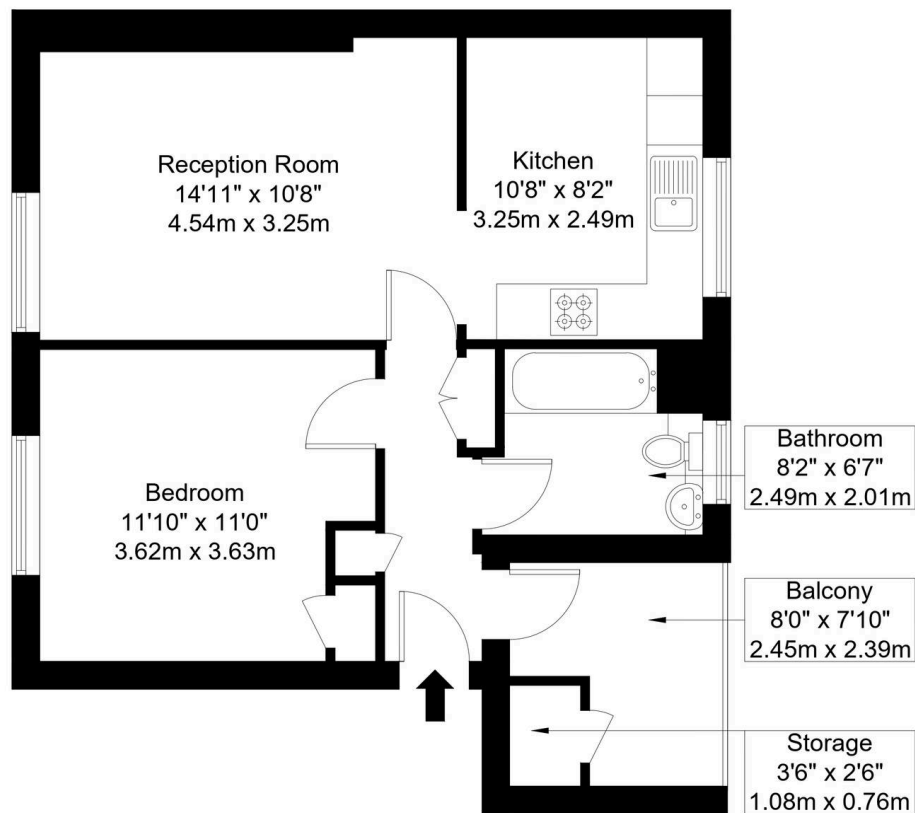
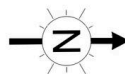
Minford Gardens, W14 0BX

Approx Gross Internal Area = 44.53 sq m / 479 sq ft

Balcony = 4.88 sq m / 53 sq ft

Storage = 0.82 sq m / 9 sq ft

Total = 50.23 sq m / 541 sq ft



First Floor

Ref :

BLEU
Copyright PLAN

The Floor plan is not to scale and measurements and areas shown are approximate and therefore should be used for illustrative purposes only. The plan has been prepared in accordance with the RICS code of Measuring Practice and whilst we have confidence in the information produced it must not be relied on. Maximum lengths and widths are represented on the floor plan.

If there is any aspect of particular importance, you should carry out or commission your own inspection of the property.

Copyright @ BleuPlan



Black Katz

22 West Hampstead Mews, London - NW6 3BB

02073285000 • Thomas@blackkatz.com • blackkatz.com/