

**LONDON
VICTORIA
GROUPS** 



**LONDON
CAPITAL
HOMES** 



1 Park Drive

, London E14 9BB

- Excellent transport links: Jubilee Line, Elizabeth Line & DLR
- Residents' lounge
- Private cinema
- Swimming Pool
- EPC-B
- Including one Parking Space + one Storage
- SPA
- State-of-the-art gym
- 24-hour concierge
- CTB-F

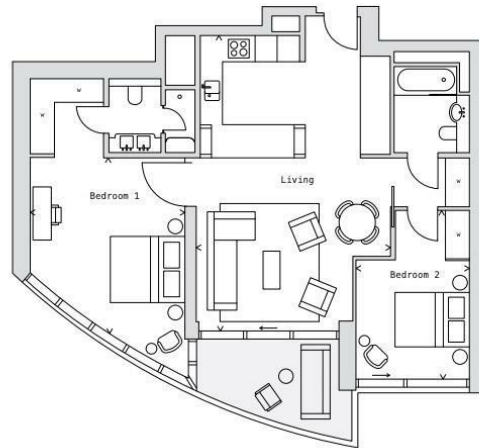
£1,500,000 Leasehold

Local Authority **Tower Hamlets**
Council Tax Band **F**
EPC Rating **B**

BAY
TYPE 21
2 BED

LOCATION
Floorplate K
Page 79

DATA	IMPERIAL	METRIC
Apartment	1017 sq ft	94.5 sq m
Terrace	94 sq ft	8.7 sq m
Living	26' 03" x 17' 03"	7.99 x 5.26 m
Bedroom 1	15' 07" x 13' 09"	4.79 x 4.19 m
Bedroom 2	15' 10" x 10' 02"	4.83 x 3.10 m



London Office Office
Spaces Victoria, 25 Wilton Road, Pimlico,
London, SW1V 1LW

Contact
020 3084 3094
XL@londonvictoriagroups.co.uk
www.londonvictoriagroups.co.uk

Agents Note: Whilst every care has been taken to prepare these particulars, they are for guidance purposes only. All measurements are approximate and for general guidance purposes only and whilst every care has been taken to ensure accuracy, they should not be relied upon and potential buyers/tenants are advised to recheck the measurements.

