

Lewis
King



4 Hackney Yard Close, Sandbach, CW11 1LH

£1,050 Per month



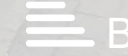
2



1



1



B



£1,050 Per month

4 Hackney Yard Close

Sandbach, CW11 1LH

- Two Bedroom Semi Detached House
- Superb Town Centre Location
- Views Over Sandbach Park Behind
- Two Double Bedrooms
- Open Plan Living Area
- Off-Road Parking for Two Cars
- Modern Kitchen and Bathrooms

Welcome to this delightful two-bedroom semi-detached home situated in the peaceful and sought-after area of Hackney Yard Close, Sandbach. Perfect for professionals, couples, or small families, this modern property offers comfort, style, and convenience.

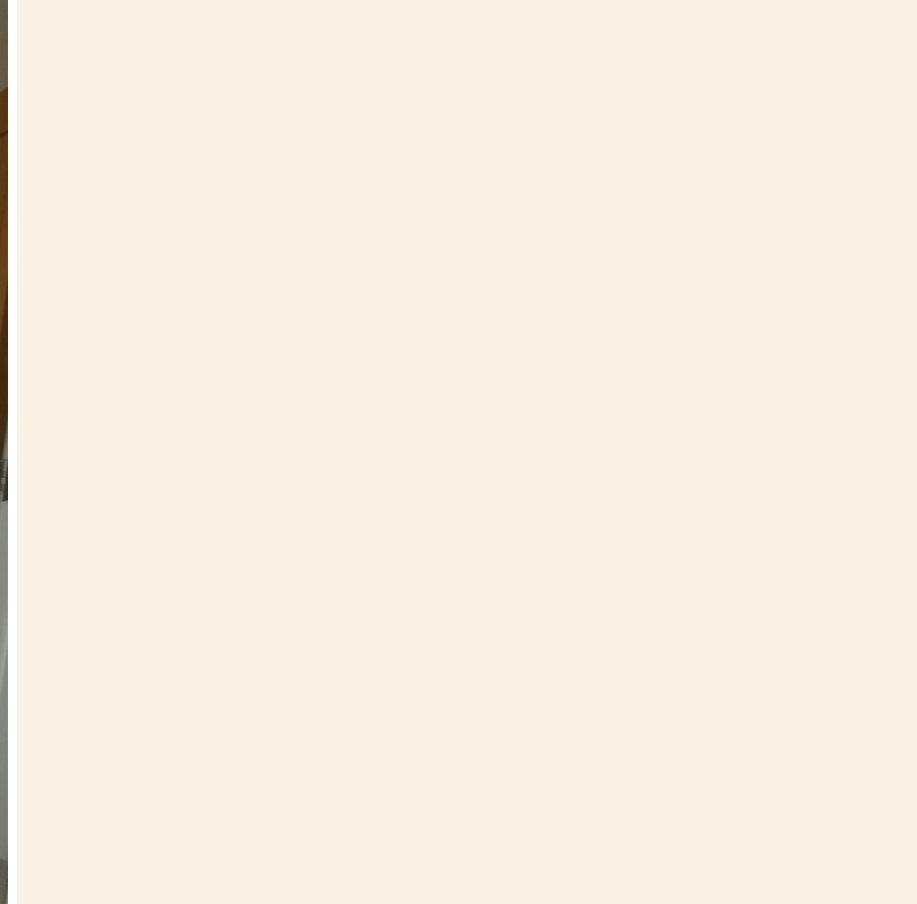
The property features a spacious living area, which is bright and airy, ideal for relaxing or entertaining guests. The modern kitchen comes fully fitted with contemporary appliances and ample storage. There are two generously sized double bedrooms, providing a restful retreat at the end of the day. The stylish family bathroom is well-appointed with a modern suite and includes a walk-in shower unit.

Outside, you'll find a private garden, perfect for barbecues or simply unwinding with views to the rear over Sandbach Park. The property also benefits from off-road parking with space for two vehicles.

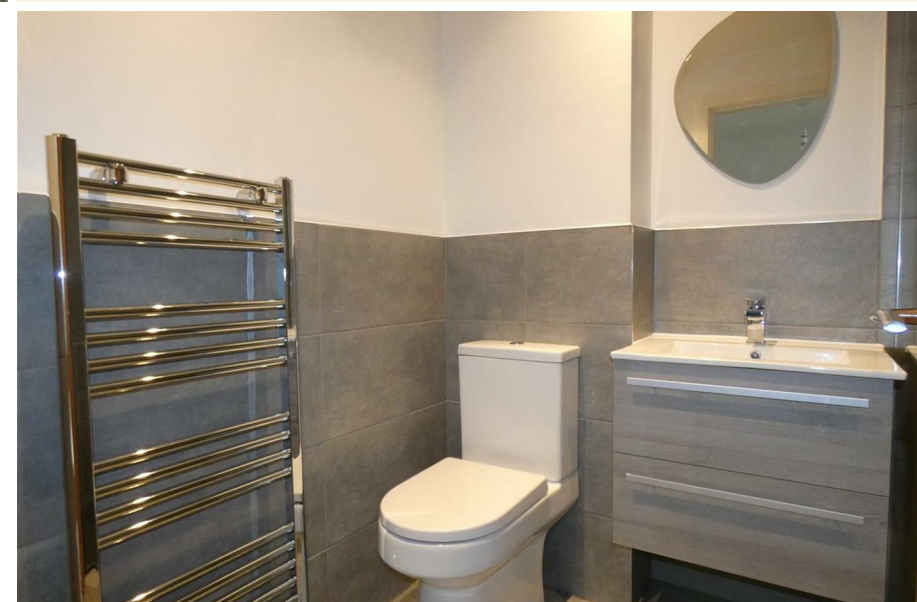
Located in the charming market town of Sandbach, this home is close to excellent local amenities, including shops, cafés, and the town's weekly market. Families will appreciate the nearby well-regarded schools and healthcare facilities. For commuters, there's easy access to major transport links, including the M6 and Sandbach Train Station.

Don't miss this opportunity to make this beautiful house your next home! Contact us today to arrange a viewing at Lewis King Estate Agents.





Directions

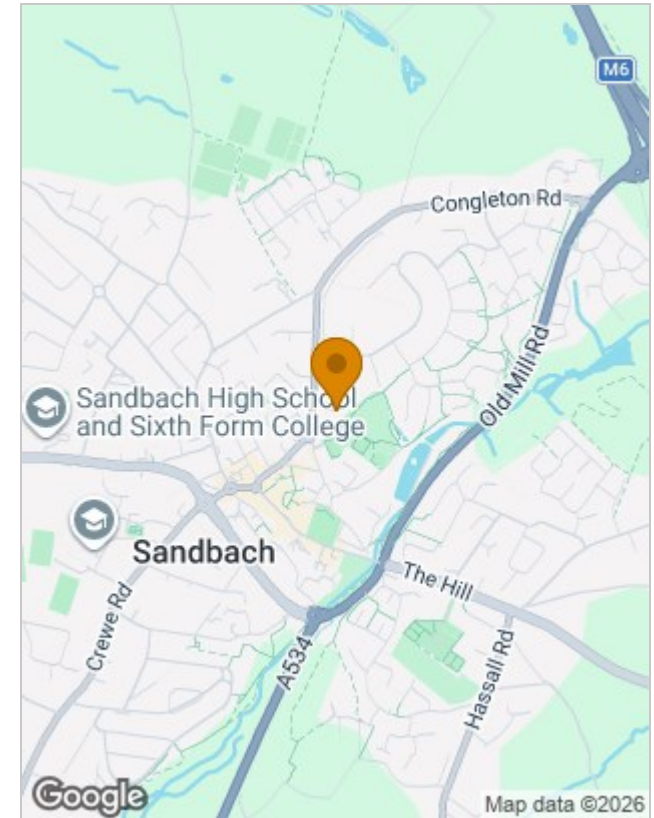




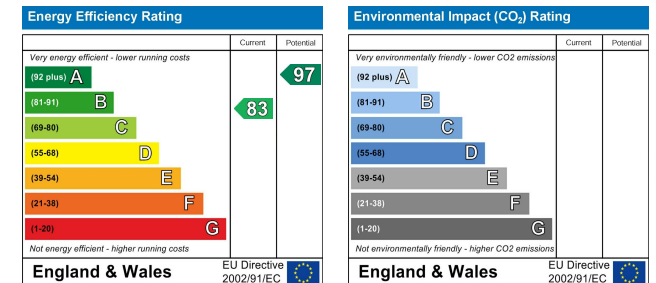
Floor Plans



Location Map



Energy Performance Graph



Viewing

Please contact our Sandbach Office on 01270 353753 if you wish to arrange a viewing appointment for this property or require further information.

The particulars are set out as a general outline only for the guidance of intended purchasers or lessees, and do not constitute, any part of a contract. Nothing in these particulars shall be deemed to be a statement that the property is in good structural condition or otherwise nor that any of the services, appliances, equipment or facilities are in good working order. Purchasers should satisfy themselves of this prior to purchasing.