

Brentwood Road

Romford, RM1 2RL

Situated on a private drive and offered for sale with no onward chain is this beautifully presented four bedroom detached bungalow. Internally the property offers an entrance porch, two reception rooms, kitchen/breakfast room, utility room, four bedrooms one with an ensuite and a family bathroom. Externally there is a gated driveway for five cars, detached garage and a 65 ft rear garden.

£685,000 - Freehold - Council Tax: E

Brentwood Road

Romford, RM1 2RL



Entrance Porch

Double glazed French doors to porch with double glazed windows to either side, wooden flooring.

Entrance Hall

Double glazed French doors to porch with double glazed windows to either side, double glazed window to side, wooden flooring, stairs to first floor, under stairs cupboard, radiator, under stairs cupboard.

Reception Room One

20'6 x 13'3 (6.25m x 4.04m)

Double glazed windows to side and front, three radiators, carpet.

Reception Room Two

16'1 x 11'4 (4.90m x 3.45m)

Double glazed windows to rear and side, two radiators, coved ceiling, laminate flooring.

Kitchen/Breakfast Room

18'4 x 17'10 narrowing to 14'6 (5.59m x 5.44m narrowing to 4.42m)

Double glazed French doors to rear, double glazed window to rear, wall and base units with granite work tops, single drainer sink, gas hob, oven, extractor, dishwasher, radiator and heated towel rail, LVT flooring.

Utility Room

4'8 x 4'6 (1.42m x 1.37m)

Double glazed window to side, boiler, plumbing for washing machine, coved ceiling.

Bedroom Three

17'9 x 10'3 (5.41m x 3.12m)

(Ground Floor). Double glazed window to side, radiator, carpet.

Bedroom Four

10'5 x 7'9 (3.18m x 2.36m)

(Ground Floor). Double glazed window to rear, coved ceiling, radiator, laminate flooring.

Bathroom

11'3 x 5'11 (3.43m x 1.80m)

Frosted double glazed window to side, low level WC, vanity wash hand basin, bath, shower cubicle, tiled flooring and walls, heated towel rail.

Landing

Cupboard, loft access, carpet.

Bedroom One

11'1 x 10'6 (3.38m x 3.20m)

Double glazed window to side, radiator, carpet.

En-Suite

Double glazed sky light, low level WC, vanity wash hand basin, shower cubicle, extractor, radiator, tiled flooring.

Bedroom Two

9'1 x 7'11 (2.77m x 2.41m)

Double glazed sky light, access to eaves storage, radiator, carpet.

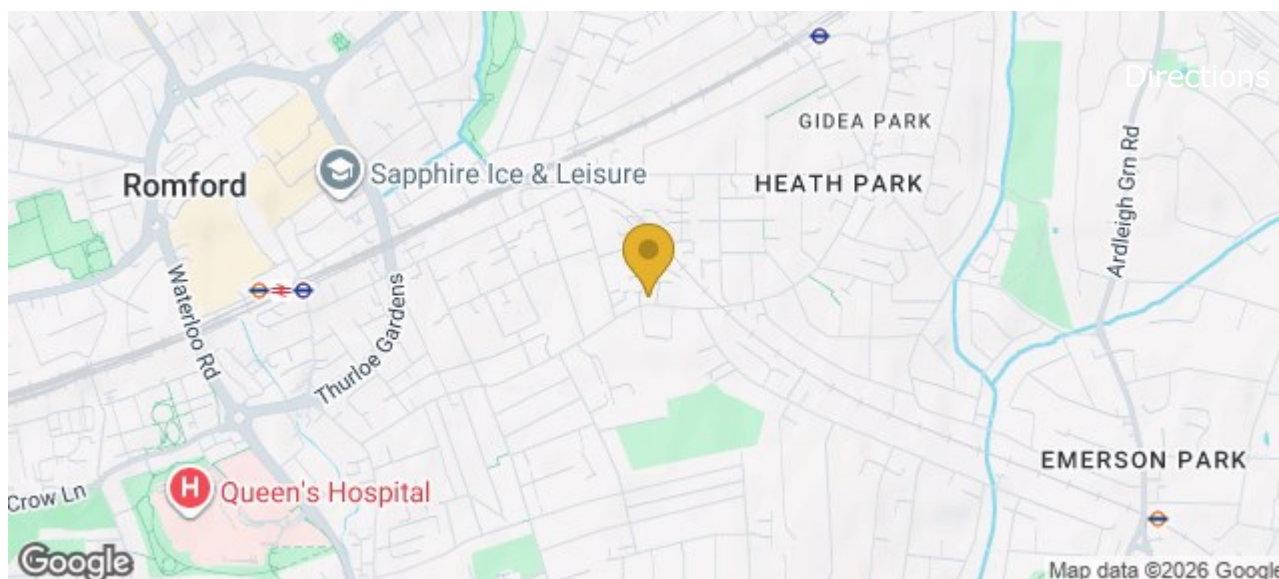
Garden

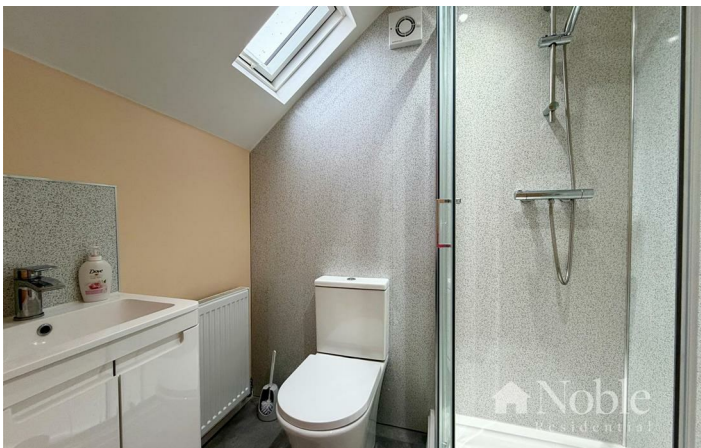
65' x 30' (19.81m x 9.14m)

Side pedestrian access, patio area, lawn, outside tap, shed.

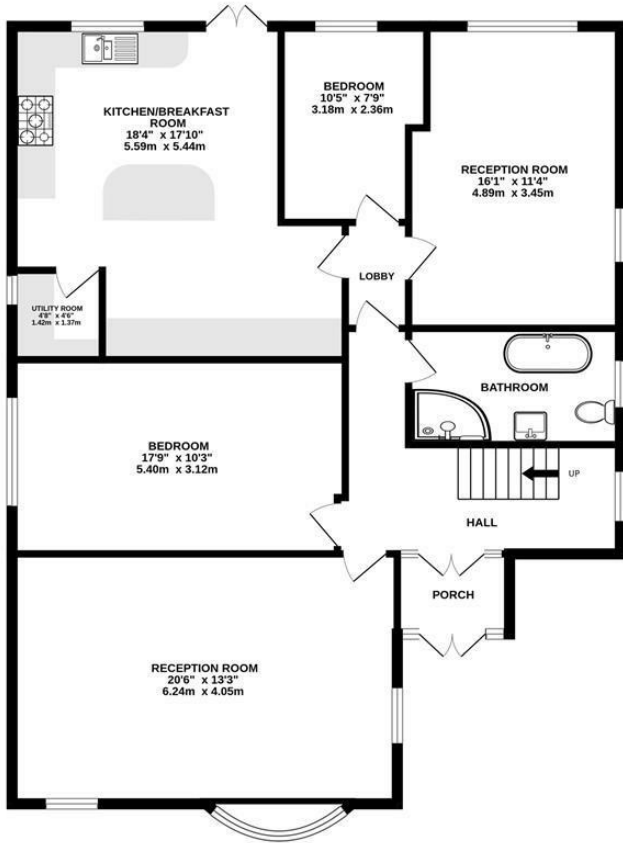
Parking

Gated driveway to front for five cars. Detached garage.

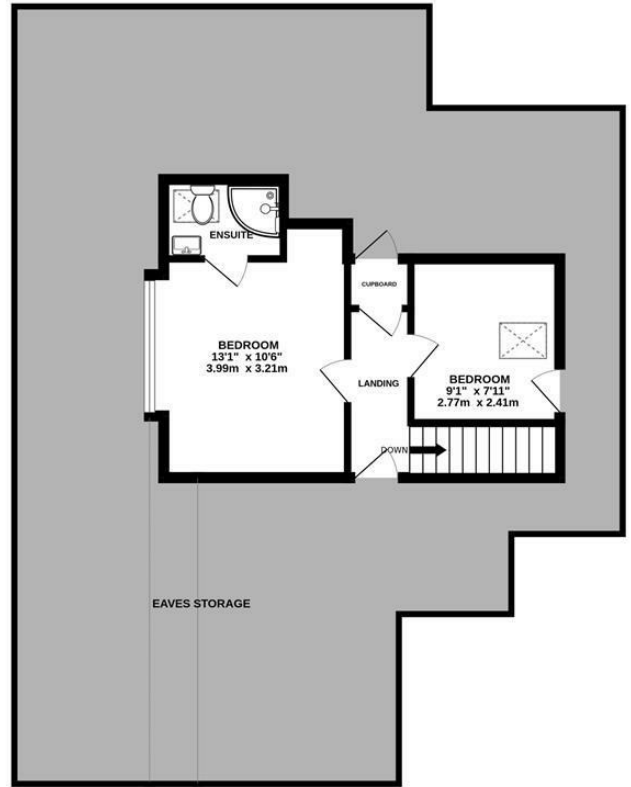




GROUND FLOOR
1211 sq.ft. (112.5 sq.m.) approx.



1ST FLOOR
284 sq.ft. (26.4 sq.m.) approx.



TOTAL FLOOR AREA : 1495 sq.ft. (138.8 sq.m.) approx.

Whilst every attempt has been made to ensure the accuracy of the floorplan contained here, measurements of doors, windows, rooms and any other items are approximate and no responsibility is taken for any error, omission or mis-statement. This plan is for illustrative purposes only and should be used as such by any prospective purchaser. The services, systems and appliances shown have not been tested and no guarantee as to their operability or efficiency can be given.
Made with Metropix ©2026

These particulars, whilst believed to be accurate are set out as a general outline only for guidance and do not constitute any part of an offer or contract. Intending purchasers should not rely on them as statements of representation of fact, but must satisfy themselves by inspection or otherwise as to their accuracy. No person in this firm's employment has the authority to make or give any representation or warranty in respect of the property.

Material Information:
Council Tax Band: E
Tenure: Freehold

