

## 15 Queens Avenue , London, N10 3PE

Moments from Muswell Hill Broadway, this stunning one double bedroom apartment set on the first floor of a beautiful period property. Immaculately presented, the home offers a bright reception room, well-equipped kitchen, spacious double bedroom, modern shower room, and a charming front balcony.

Perfectly positioned to enjoy Muswell Hill's vibrant lifestyle, the property is surrounded by an excellent selection of independent shops, cafés, restaurants, and the Everyman Cinema, with numerous transport links providing easy access across London. This delightful home is offered chain free, making it an ideal first-time purchase or investment opportunity.

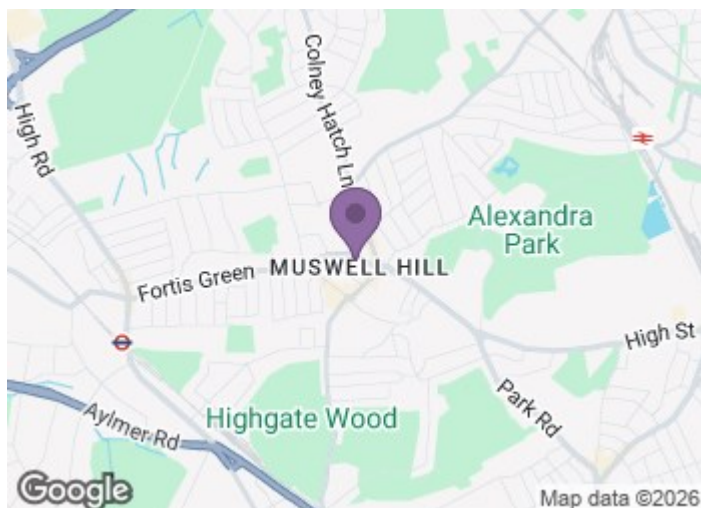
**£450,000**

# 15 Queens Avenue

, London, N10 3PE



- Reception
- Double Bedroom
- Share of Freehold
- Kitchen
- Balcony
- Chain Free
- Shower Room
- Prime Location

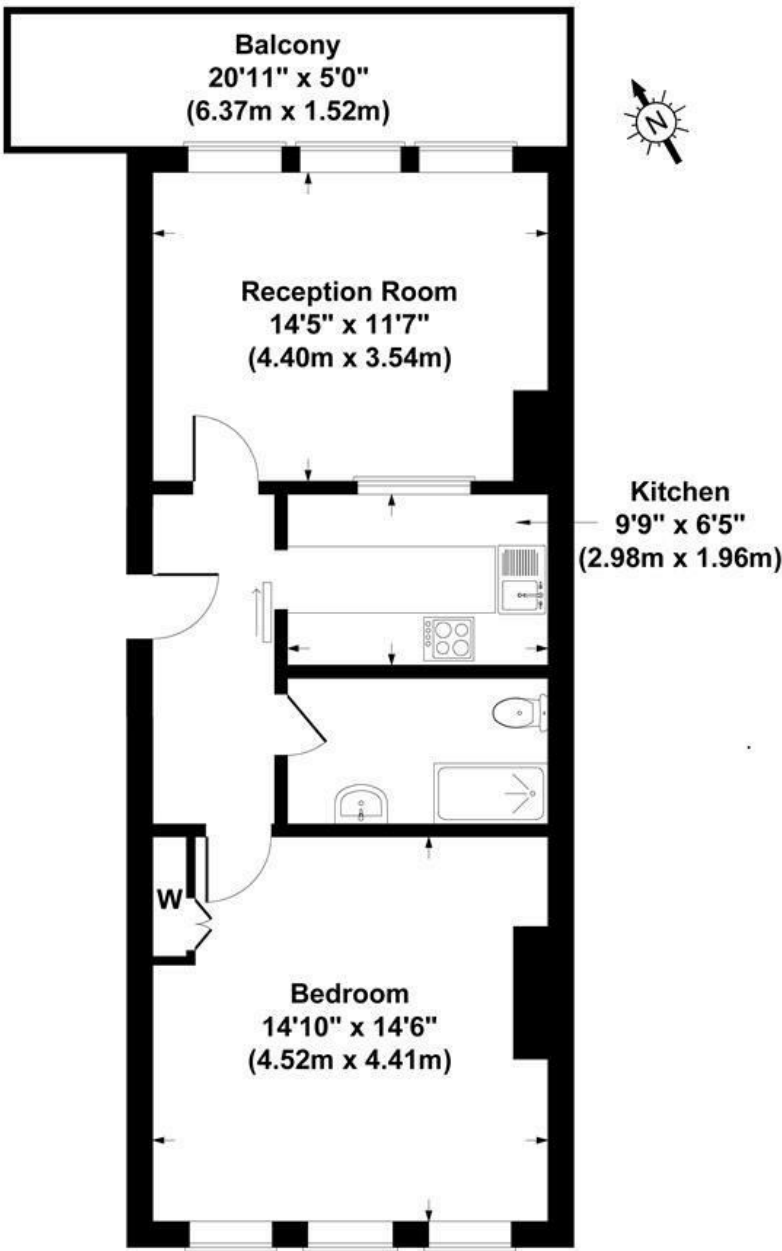


[Directions](#)





Floor Plan



First Floor

Queens Avenue, London, N10

Gross Internal Area 581 sq ft / 54 sq metres

Not to Scale. Produced by The Plan Portal 2025  
For Illustrative Purposes Only.

These particulars, whilst believed to be accurate are set out as a general outline only for guidance and do not constitute any part of an offer or contract. Intending purchasers should not rely on them as statements of representation of fact, but must satisfy themselves by inspection or otherwise as to their accuracy. No person in this firms employment has the authority to make or give any representation or warranty in respect of the property.

Energy Efficiency Rating		
	Current	Potential
Very energy efficient - lower running costs		
(92 plus) <b>A</b>		
(81-91) <b>B</b>		
(69-80) <b>C</b>		
(55-68) <b>D</b>		
(39-54) <b>E</b>		
(21-38) <b>F</b>		
(1-20) <b>G</b>		
Not energy efficient - higher running costs		
England & Wales		
EU Directive 2002/91/EC		