



225 St. Neots Road, Hardwick,
Cambridge, CB23 7QJ

Guide price £675,000

225 St. Neots Road

Hardwick, CB23 7QJ

- Good size family house
- South facing garden
- Scope to update
- Great location for access to Cambridge

An individual 4-bedroom family house with deceptively large accommodation, a double garage and lovely walled south-facing garden, located just a 10-minute drive from Cambridge.

This modern, detached, house is perfect for a large family as it has spacious living accommodation, including a large kitchen and four double bedrooms. The accommodation has been beautifully maintained, but some purchasers may choose to carry out some updating.

There is a large hallway, the living room has a dual aspect and includes doors to the garden, and a gas fire in a marble surround. The separate dining room has doors to the garden. The kitchen/breakfast room is a good size, is well fitted and has various appliances and a range cooker, as well as a door to the side garden. There is also a cloakroom and WC.

Upstairs, there are four double bedrooms, the main room has extensive fitted cupboards and





an en-suite shower room. The family bathroom has a Velux rooflight and WC.

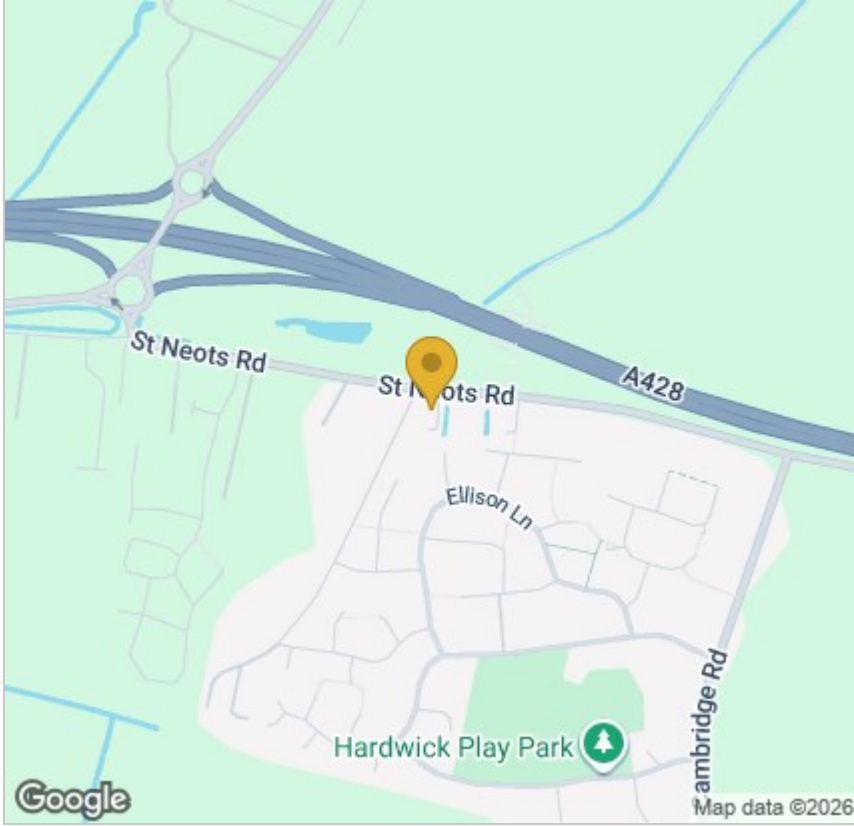
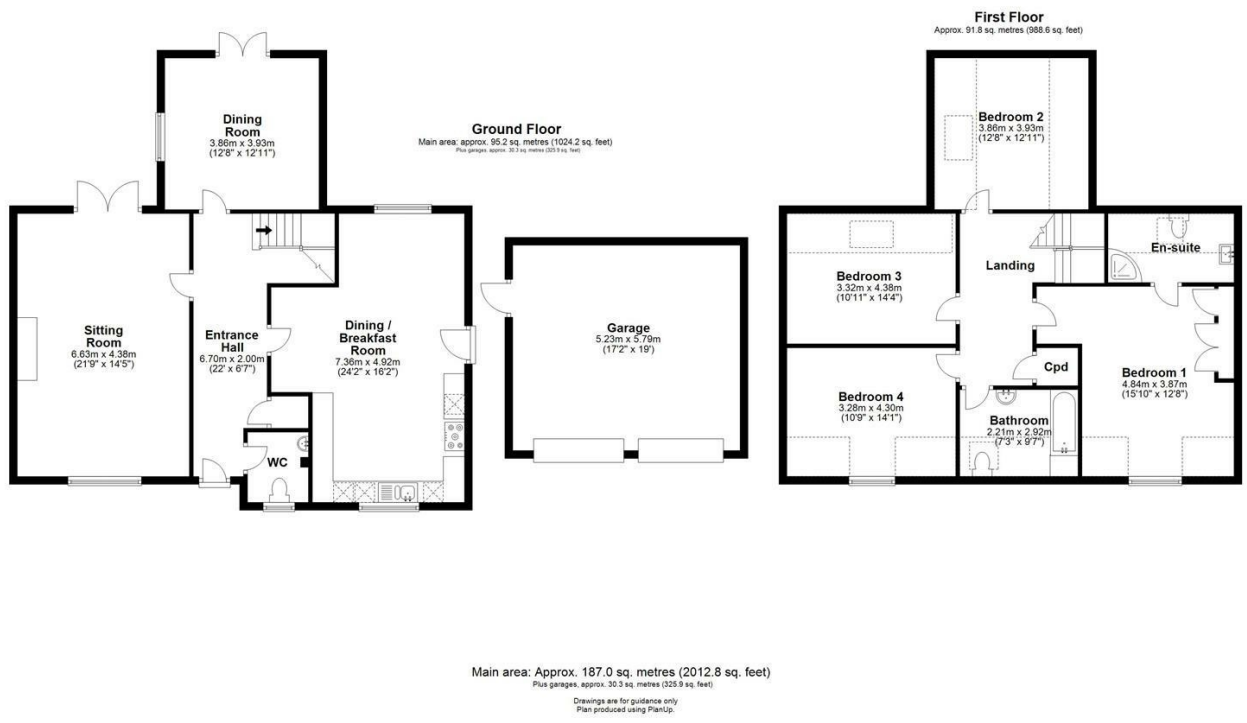
The house has gas central heating and double glazing.

The house is set well back from the road and has a driveway for parking and a detached double garage. The front garden is lawn, and there is a shed and a greenhouse.

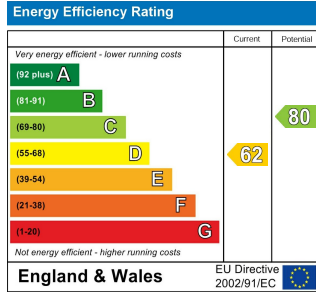
At the side of the house is a paved garden, and this leads to the rear, south-facing, garden, which is enclosed by walling. There are two patios, flower and shrub beds and a greenhouse.

What3words: ///golf.skate.emails





Energy Efficiency Graph



Tenure: Freehold
Council tax band: F

These particulars, whilst believed to be accurate, are set out as a general outline only for guidance and do not constitute any part of an offer or contract. Intending purchasers should not rely on them as statements of representation of fact, but must satisfy themselves by inspection or otherwise as to their accuracy. No person in this firm's employment has the authority to make or give any representation or warranty in respect of the property.

Cambridge Victoria
154-156 Victoria Road, Cambridge CB4 3DZ
01223 439 888 theteam@grayandtoynbee.com

Cambridge South
Adkins Corner, Perne Road, Cambridge CB1 3RU
01223 439 555 theteam@grayandtoynbee.com

Waterbeach
17 High Street, Waterbeach, CB25 9JU
01223 949 444 waterbeach@grayandtoynbee.com