



6 The Spinney, Knaresborough

£489,950 Guide Price



**YOUR AWARD
WINNING AGENT**

#DARINGTOBEDIFFERENT



A beautifully presented and spacious four-bedroom detached home, featuring a driveway, integral garage, and attractively landscaped gardens to both the front and rear, situated in this highly desirable residential location. The Spinney is a popular and convenient residential development with a children's play park and is ideally placed close to local shops and public transport. Knaresborough's town centre is within easy walking distance and there is also easy access to beautiful open countryside close by.

EPC: C. Council Tax: E. Freehold



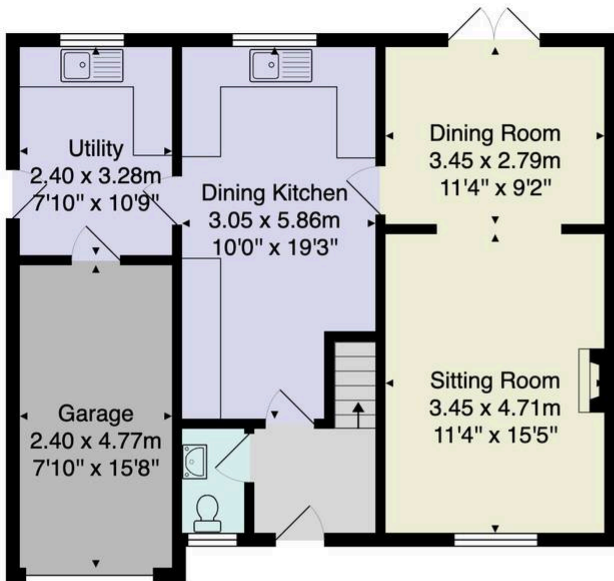
The well-planned and beautifully appointed accommodation is entered via a welcoming entrance hallway, leading through to a bright and spacious lounge, ideal for relaxation. This in turn flows seamlessly into the dining room, creating a sociable and versatile space perfectly suited to both everyday living and entertaining. The dining room benefits from doors opening directly onto the patio, providing a wonderful connection to the garden and enhancing the sense of light and space. The dining kitchen is thoughtfully designed and fitted with a range of high-quality units and integrated appliances, offering ample storage and workspace, and providing a practical yet stylish environment for day-to-day living.

A separate utility room adds further practicality, with access to the side of the property, while integral access to the garage provides additional convenience. The ground floor is completed by a well-positioned WC, ideal for guests and everyday family use.

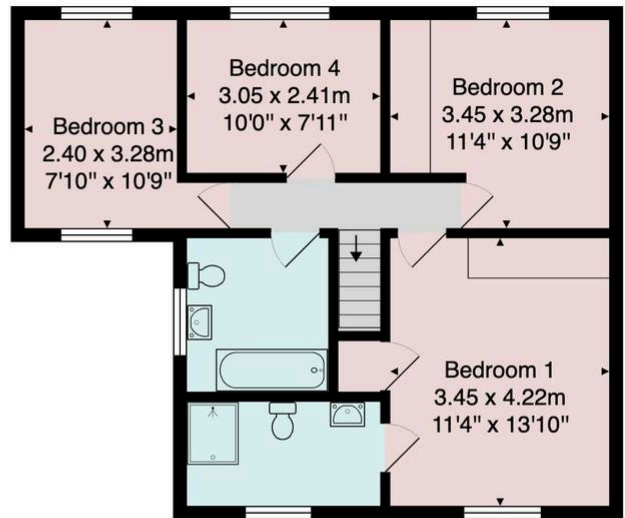
To the first floor are four well-proportioned bedrooms, all beautifully presented in neutral tones. The principal bedroom benefits from fitted storage and a stylish en-suite shower room, finished with contemporary tiling and quality fittings.

The remaining bedrooms are all of a good size, offering flexibility for family living, guest accommodation, or home working. A modern family bathroom completes the accommodation, featuring a sleek and contemporary suite including bath, vanity unit, and WC.





Ground Floor



First Floor

Total Area: 131.4 m² ... 1414 ft²

All measurements are approximate and for display purposes only.

No liability is accepted by either the agency or Box Property Solutions Ltd as to the exact measurements of the rooms.

Box Property Solutions Ltd retains the copyright on this plan and allows agents to use it with agreed permission.

