



**POOLE
TOWNSEND**

Lightburn Road, Ulverston, LA12 0BX

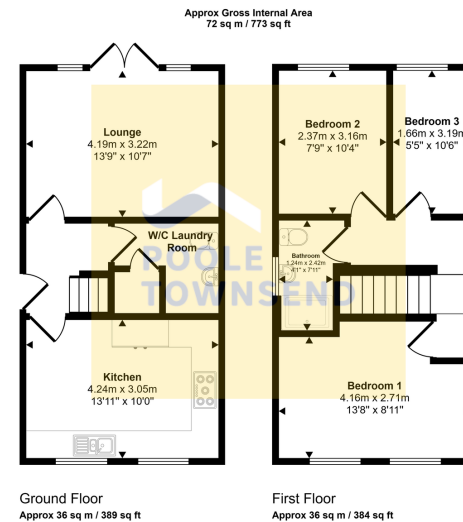
£295,000

🛏️ 3 🚿 1 🚗 1



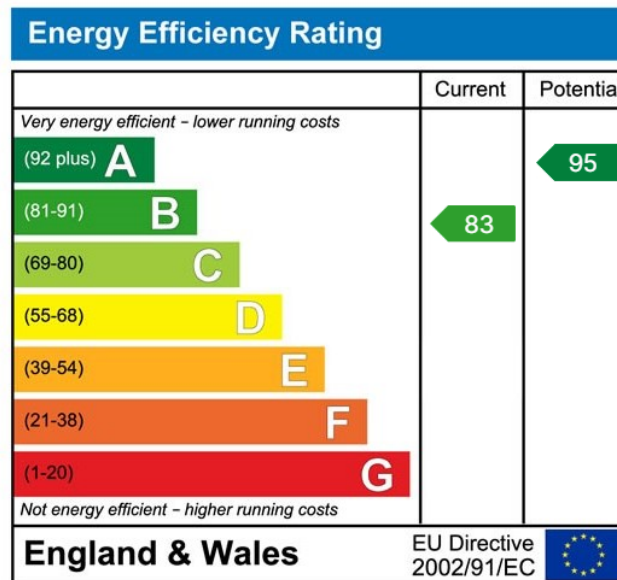
- Modern detached home
- Spacious lounge
- Stunning fitted kitchen
- Downstairs wc and laundry room
- 3 bedrooms
- Off road parking
- Patio garden to rear
- Highly energy efficient
- Freehold
- Council tax band D





This floorplan is only for illustrative purposes and is not to scale. Measurements of rooms, doors, windows, and any items are approximate and no responsibility is taken for any error, omission or mis-statement. Icons of items such as bathroom suites are representations only and may not look like the real items. Made with Made Snappy 360.

Nestled in a convenient location, this recently built detached property offers comfortable living with three bedrooms, one bathroom, and a welcoming reception room. Boasting a driveway for off-road parking and a private patio garden, this home is perfect for those seeking a blend of practicality and access to amenities and transport links. With a price of £300,000, it presents an attractive opportunity for a new owner.



Visit us at
www.pooletownsend.co.uk
enquiries@pooletownsend.co.uk

We are open
 Monday – Friday 9.00 – 5.00
 Saturday 9.00 – 1.00

Barrow 01229 811811
 Ulverston 01229 588111
 Grange 015395 33316
 Kendal 01539 734455
 Milnthorpe 015395 62044