



Pinkmove

Manor Road

£210,000

- Well Presented End of Terrace Property
- Four Double Bedrooms
- Enclosed Rear Garden
- Modern Kitchen/Diner
- Spacious Reception Room
- EPC Rating: D



 4  1  2

Pinkmove

01633 746088
team@pinkmove.co.uk



About the property

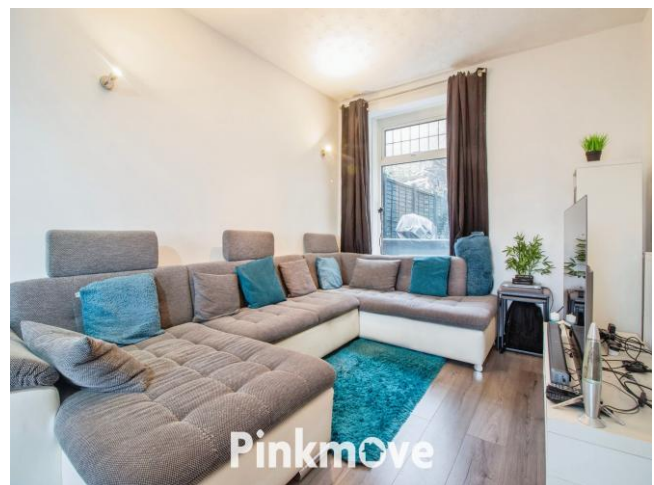
Presenting this attractive end-of-terrace home, offered for sale in good condition throughout. Ideally positioned to enjoy pleasant surrounding views, the property also benefits from excellent access to public transport links, local amenities and well-regarded schools, making it an ideal choice for families.

The property comprises four generously proportioned double bedrooms, providing ample space for growing families or those seeking flexible living arrangements. The main reception room is a standout feature, enhanced by a charming bay window that floods the space with natural light and creates a welcoming atmosphere.

The property further benefits from a well-appointed kitchen with space for dining, perfect for everyday family meals as well as entertaining. In total, the home offers two reception rooms alongside the kitchen, creating a well-balanced and practical layout suited to modern living. A family bathroom, well maintained and in keeping with the rest of the property, completes the internal accommodation.

Externally, the property enjoys the added advantage of a private garden, offering a lovely outdoor space for relaxation, entertaining or enjoying time with family and friends.

This delightful end-of-terrace home combines comfort, convenience and charm, and must be viewed to be fully appreciated.





Accommodation

Living Room

10' 4" x 10' 6" (3.15m x 3.20m)
Max Measurements

Dining Room

10' 6" x 12' 8" (3.20m x 3.86m)
Max Measurements

Kitchen

23' 1" x 8' 7" (7.04m x 2.62m)
Max Measurements

Bedroom One

13' 10" x 8' 10" (4.22m x 2.69m)
Max Measurements

Bedroom Two

10' 8" x 10' 6" (3.25m x 3.20m)
Max Measurements

Bedroom Three

10' 7" x 10' 7" (3.23m x 3.23m)
Max Measurements

Bedroom Four

10' 8" x 5' 7" (3.25m x 1.70m)
Max Measurements

Bathroom

8' 6" x 5' 8" (2.59m x 1.73m)
Max Measurements

01633 746088

team@pinkmove.co.uk

Pinkmove

Floorplan



Total area: approx. 102.4 sq. metres (1102.4 sq. feet)
81 Manor Road

Important Information

Note while we endeavour to make our sales details accurate and reliable, if there is any point which is of particular interest to you, please contact the office and we will be pleased to confirm the position for you. We have not personally tested any apparatus, equipment, fixtures, fittings or services and cannot verify they are in working order or fit for their purposes. Nothing in these particulars is intended to indicate that carpets or curtains, furnishings or fittings, electrical goods (whether wired or not). Gas fires or light fittings or any other fixtures not expressly included form part of the property offered for sale. This computer generated Floorplan, if applicable, is intended as a general guide to the layout and design of the property. It is not to scale and should not be relied upon for dimensions. Tenure: We cannot confirm the tenure of the property as we have not had access to the legal documents. The buyer is advised to obtain verification from their solicitor or surveyor.

Peter Alan Limited is registered in England and Wales under company number 2073153, Registered Office is Cumbria House, 16-20 Hockliffe Street, Leighton Buzzard, Bedfordshire, LU7 1GN. VAT Registration Number is 500 2481 05. For activities relating to regulated mortgages and non-investment insurance contracts, Peter Alan Limited is an appointed representative of Connells Limited which is authorised and regulated by the Financial Conduct Authority. Connells Limited's Financial Services Register number is 302221. Most buy-to-let

