



Wricklemarsh Road, SE3

£325,000

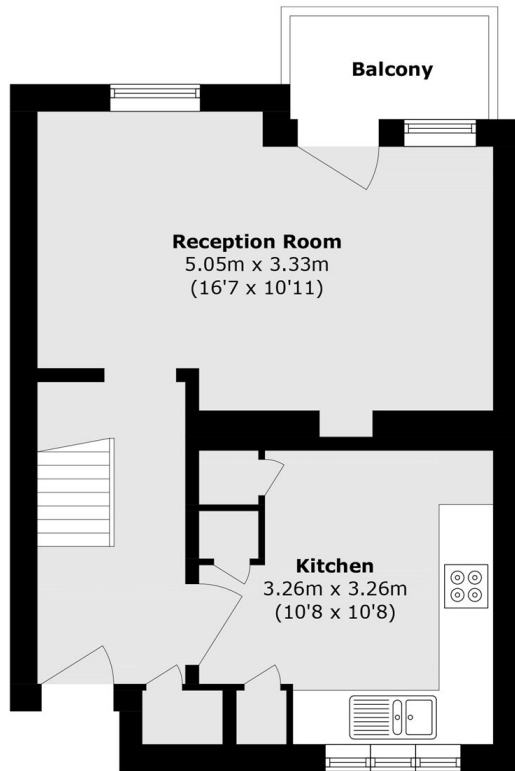
A spacious two double bedroom split-level flat arranged over the second and top floors, benefitting from its own private front door. The lower level comprises a large separate kitchen and a bright reception room to the rear of the property with direct access onto a private balcony. Upstairs offers two well-proportioned double bedrooms, a family bathroom and a separate WC. The property further benefits from excellent natural light throughout and a practical layout, making it an ideal first time purchase or investment.

The property is opposite playing fields, providing a peaceful setting, and is within easy reach of Blackheath Royal Standard for its shops and amenities. For commuters, both Westcombe Park and Kidbrooke station are nearby, with bus services to North Greenwich also easily accessible.

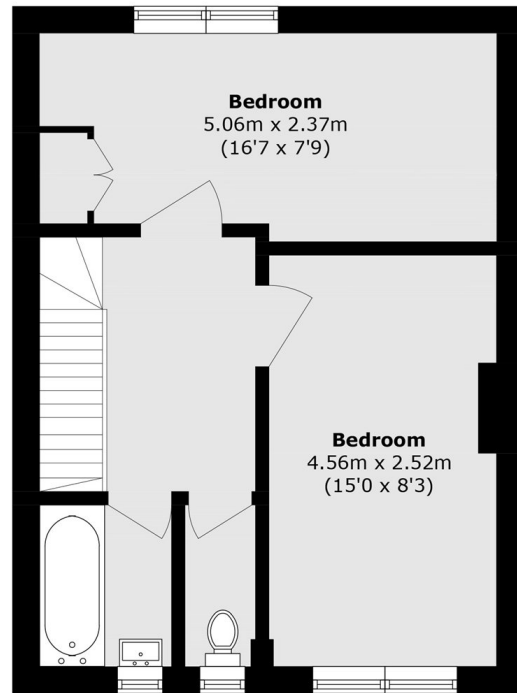
Features

- Split Level
- Maisonette
- Private Balcony
- Chain Free
- Good Condition Throughout
- Two Double Bedrooms

Wricklemarsh Road, London, SE3



Second Floor



Third Floor

Total area (approx.): 69.3 sq. m (745.9 sq. ft)
Balcony area (approx.): 2.5 sq. m (26.9 sq. ft)