



BROADWALK, UPPER WILLIAM STREET BIRMINGHAM, B1 2LL

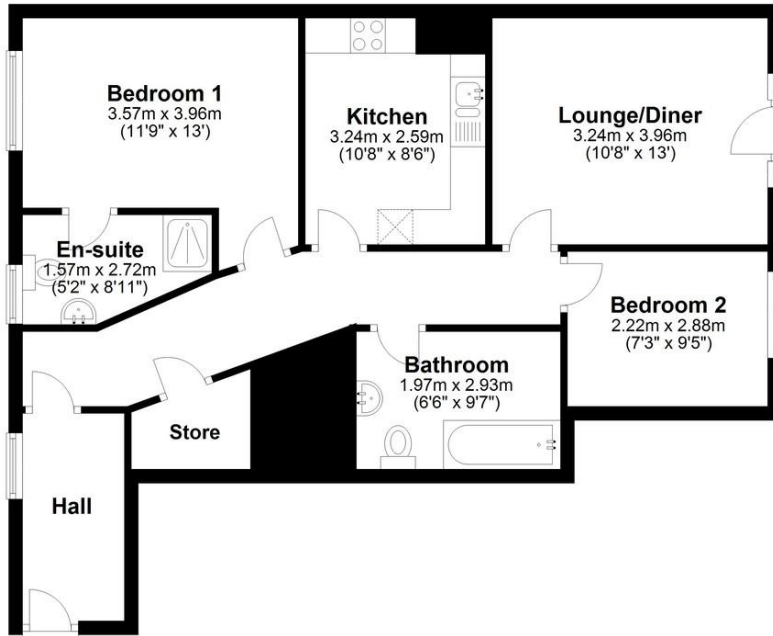
£155,000
LEASEHOLD

A spacious and well-laid-out two-bedroom, two-bathroom apartment with allocated parking in a convenient Birmingham City Centre location. Ideal for professionals, first-time buyers, or investors seeking strong rental appeal and practical living space.

Davidson

Floor Plan

Approx. 69.7 sq. metres (749.9 sq. feet)



Total area: approx. 69.7 sq. metres (749.9 sq. feet)

This floor plan is not to scale and is for illustration/marketing purposes only.
Plan produced using PlanUp.

Energy Efficiency Rating		
	Current	Potential
Very energy efficient - lower running costs		
(92 - 100) A		
(81 - 91) B		
(69 - 80) C	72	72
(55 - 68) D		
(39 - 54) E		
(21 - 38) F		

Davidson

OFFICE
22 Harborne Road
Birmingham
West Midlands
B15 3AA

0121 455 7727
info@davidsonstates.co.uk
www.davidsonstates.co.uk

Agents Note: Whilst every care has been taken to prepare these particulars, they are for guidance purposes only. All measurements are approximate and are for general guidance purposes only and whilst every care has been taken to ensure their accuracy, they should not be relied upon and potential buyers/tenants are advised to recheck the measurements