



Dace Road, E3

£550,000

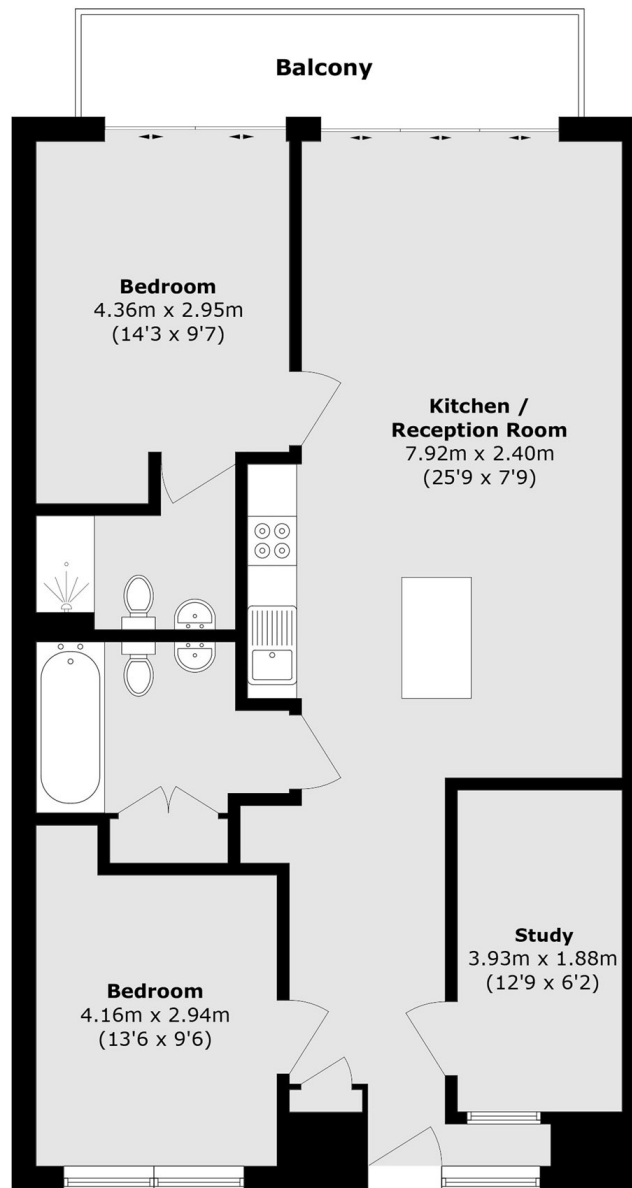
A two bedroom, two bathroom apartment spreading over 960 sq ft in the popular development Iron Works. The property has access to a balcony and benefits from communal gardens.

This gated development perfectly situated by the River Lea and across from Queen Elizabeth Olympic Park, with Hackney Wick Station less than mile away.

Features

- Allocated Parking
- Concierge
- Balcony
- Communal Gardens
- River Lea
- Queen Elizabeth Olympic Park

Dace Road, London, E3



Total area (approx.): 89.4 sq. m (962.3 sq. ft)

Balcony area (approx.): 7.6 sq. m (81.8 sq. ft)