



## Brearley Gardens, Off Victoria Road, Liversedge, WF15 7SZ

Offers In Region Of £490,000

4 3



**EY UP** bring you **Coverdale**, a stunning four double bedroom detached home, tucked behind private gates in an exclusive setting of just four homes. Complete with a double garage, generous wrap-around gardens, and a spacious interior, this property offers both elegance and convenience with an exceptional location.



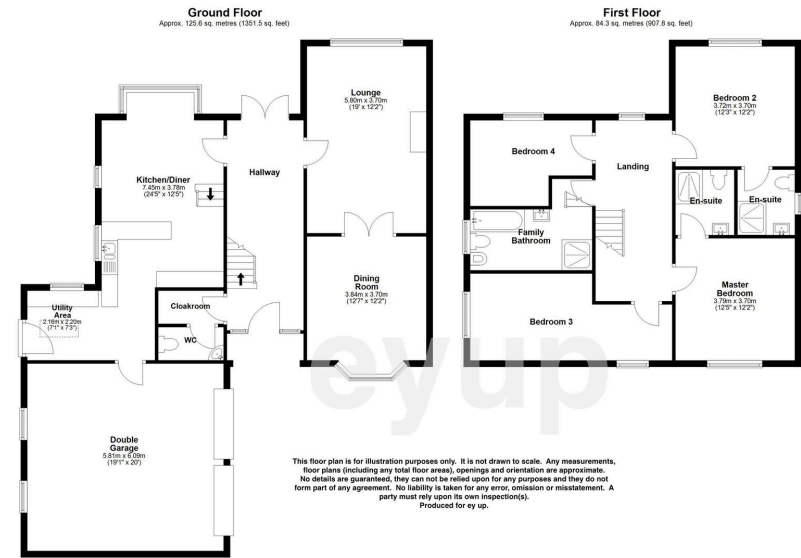


**Floor Area**  
2250 sq. ft.

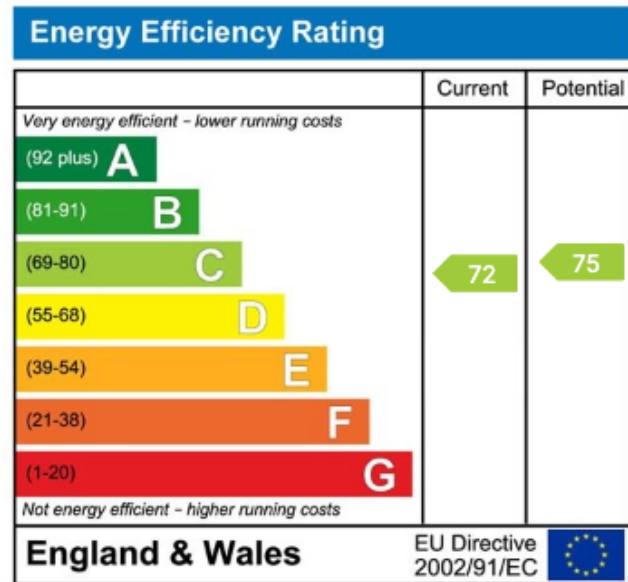
**Tenure**  
Freehold

**Service Charge**  
£0 per annum

**Ground Rent**  
£0 per annum



Total area: approx. 209.9 sq. metres (2259.2 sq. feet)



Based in the heart of Yorkshire, ey up combines traditional Yorkshire values, with outstanding service. We believe in more is, well, more!

A fresh approach to buying and selling homes, the Yorkshire way!

01484 972 054  
hello@eyup-move.me

eyup-move.me