



Hartington Road, SW8

£469,950

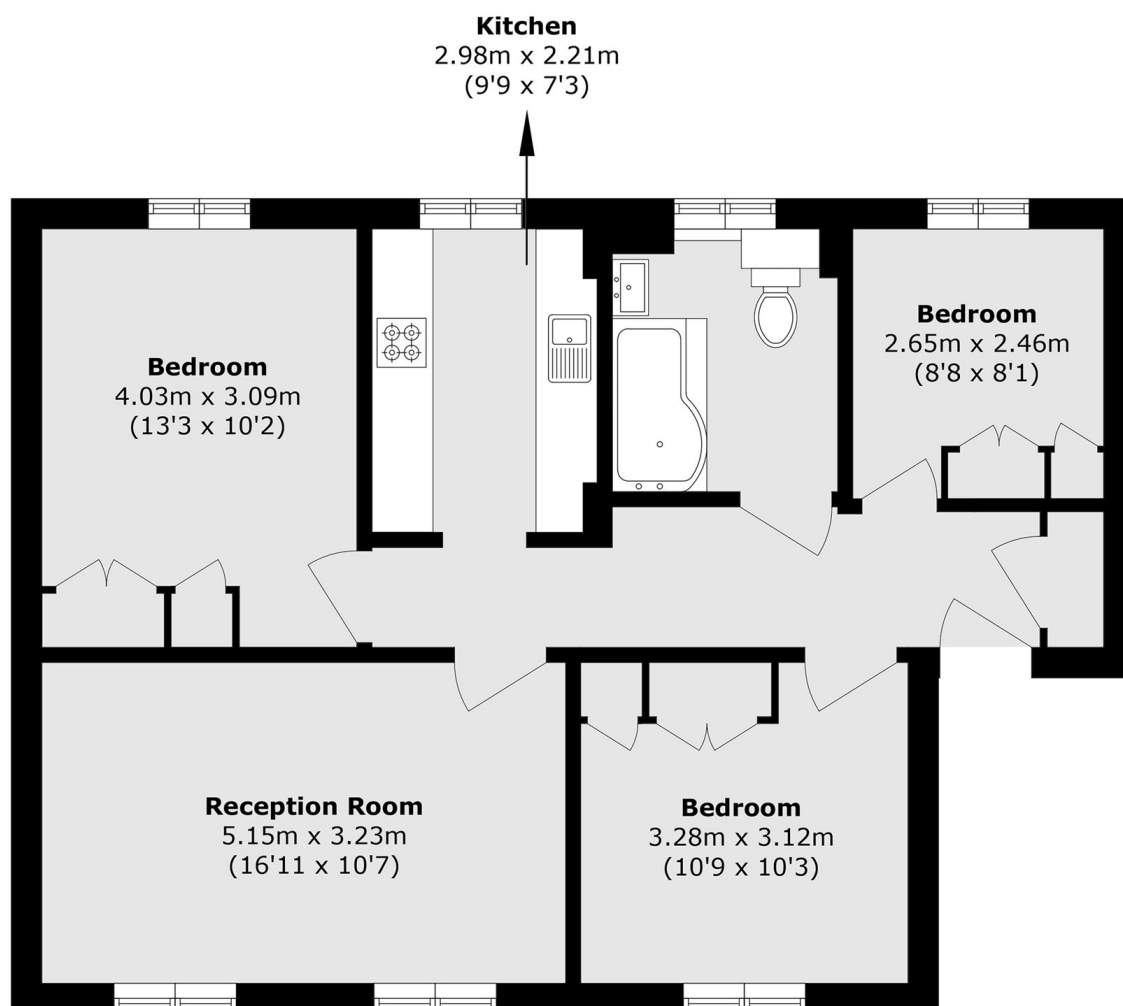
A fantastic three double bedroom purpose built flat in great condition throughout. Well proportioned throughout, the property is flooded with natural light and benefits from a large reception room providing space for both living and dining areas. There is great storage throughout and a separate modern kitchen with plenty of work stop space, which is ideal for those who love to cook. The property also has access to communal gardens and is being sold with no onward chain.

Hartington Road is a fantastic street, quietly located just moments from Nine Elms Tube station and within a short walk of Stockwell tube and Vauxhall Mainline stations. This peaceful location is perfect for the busy commuter, with many bus links near buyer and access to fantastic jobs including Sainsburys superstore and coffee shops

Features

- Three Bedrooms
- Purpose Built
- Great Location
- No Onward Chain
- Good Condition
- Communal Gardens

Hartington Road, London, SW8



Total area (approx.): 70.9 sq. m (763.2 sq. ft)