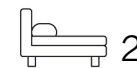




Living
made
better

Liddiard House
Greenwich, SE10 0ZN



Asking Price £525,000

Liddiard House, Greenwich, SE10 0ZN

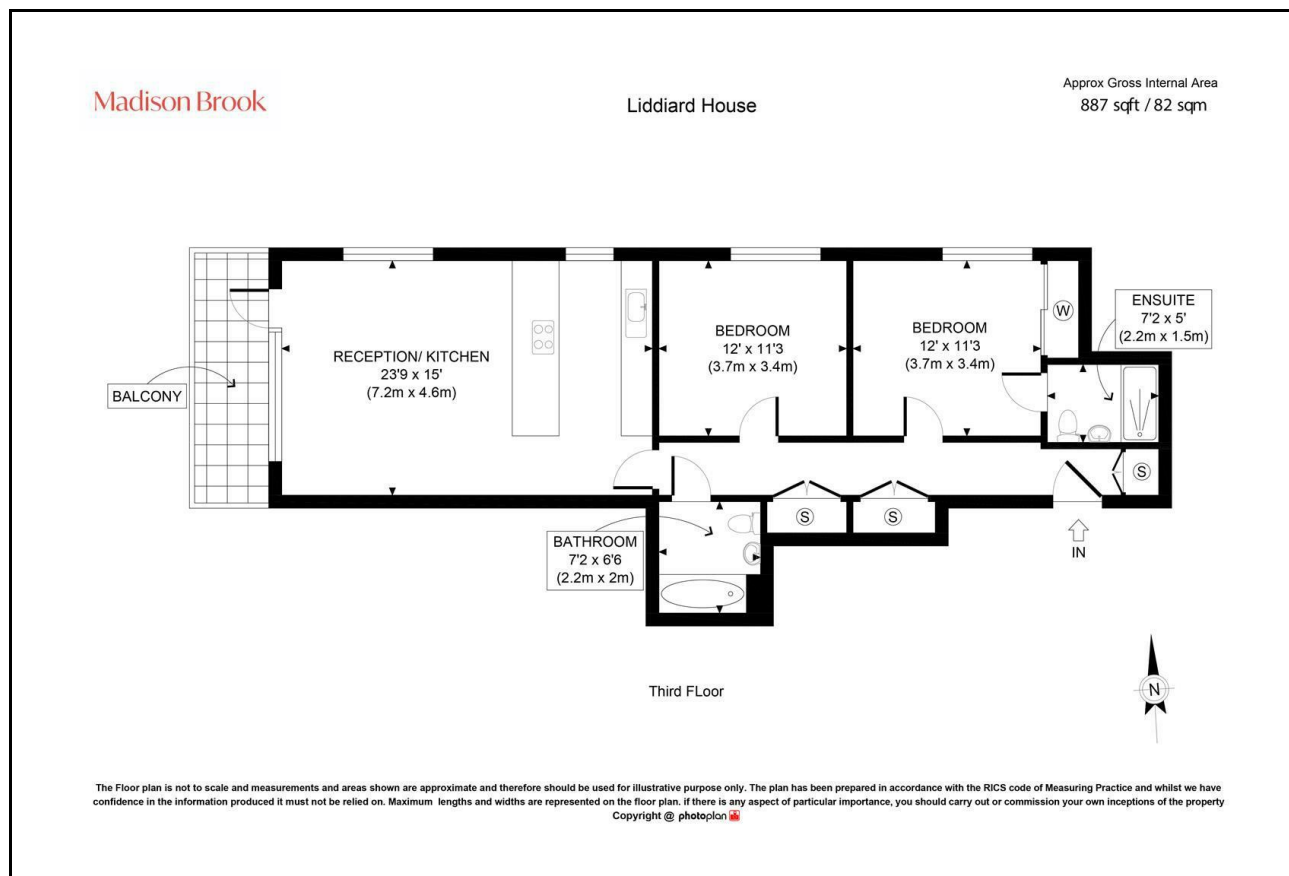
Madison Brook

Property Summary

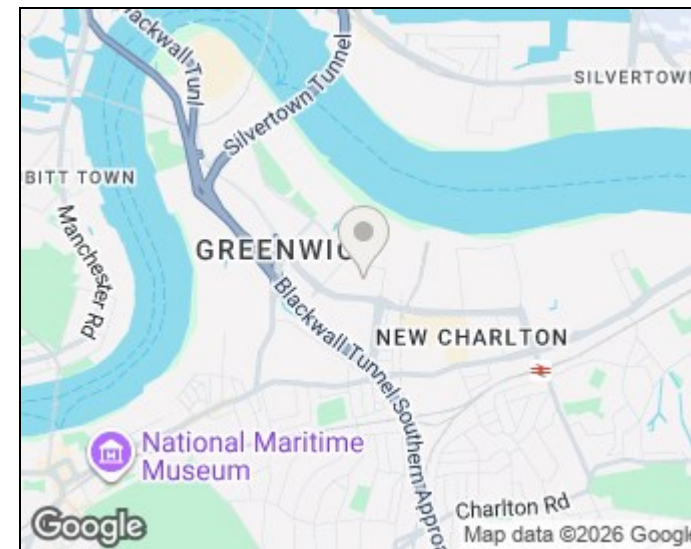
A spacious two bedroom apartment in Liddiard House featuring a large open-plan living area, integrated kitchen with island, a west-facing private balcony, two well-proportioned bedrooms, one en-suite bathroom and a modern family bathroom. Residents benefit from ample storage space throughout. Ideally located close to local amenities, with concierge service and excellent links to North Greenwich Station and the O2.

Service Charge: £3,356 pa | Ground Rent: £400 pa | Lease Remaining: 93 years

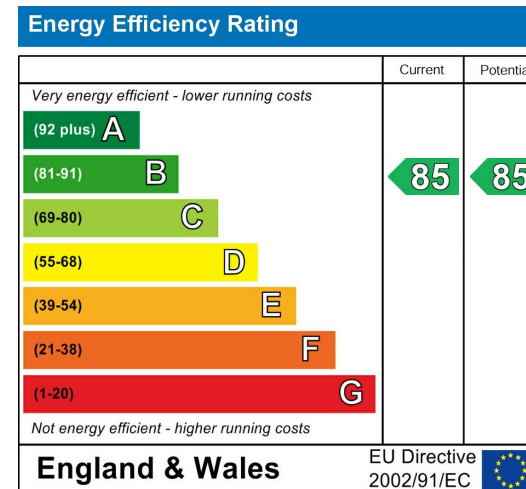
Floorplan



Area Map



Energy Efficiency Graph



These particulars, whilst believed to be accurate are set out as a general outline only for guidance and do not constitute any part of an offer or contract. Intending purchasers should not rely on them as statements of representation of fact, but must satisfy themselves by inspection or otherwise as to their accuracy. No person in this firm's employment has the authority to make or give any representation or warranty in respect of the property.

43 Loampit Vale, Lewisham, London, SE13 7FT

Tel: 020 3946 6200 Email:

lewisham@madisonbrook.com

<https://madisonbrook.com/>