



## Charlton Church Lane, SE7

£375,000

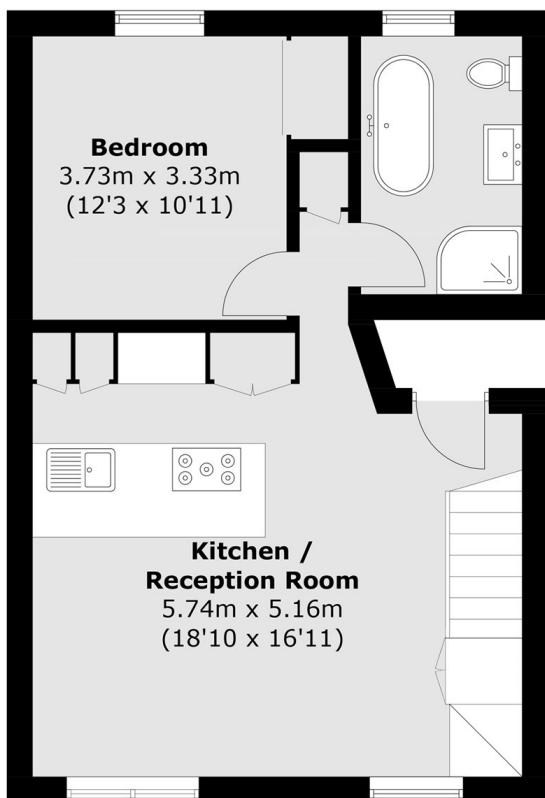
Situated on the top floor of an attractive Victorian conversion, this well-presented split-level flat offers bright and spacious accommodation, ideal for modern living. The property features an open plan kitchen and reception area, creating an excellent space for both relaxing and entertaining. Large windows allow for an abundance of natural light, enhancing the sense of space throughout. There are two well-proportioned double bedrooms, with the layout thoughtfully arranged across two levels to provide a practical degree of separation between living and sleeping areas. The flat further benefits from two bathrooms, offering added convenience for sharers, guests, or family living. Offered to the market with no onward chain, this home presents a fantastic opportunity for first time buyers and investors alike, as well as those seeking a character property with contemporary appeal.

Situated just minutes from Charlton station, this home offers excellent transport links with direct services into London Bridge, Cannon Street, and City Thameslink, ensuring a quick and easy commute into Central London. Charlton Church Lane is a highly sought-after residential street, surrounded by local shops, popular superstores in Charlton, and excellent primary schools, making it an ideal location for families.

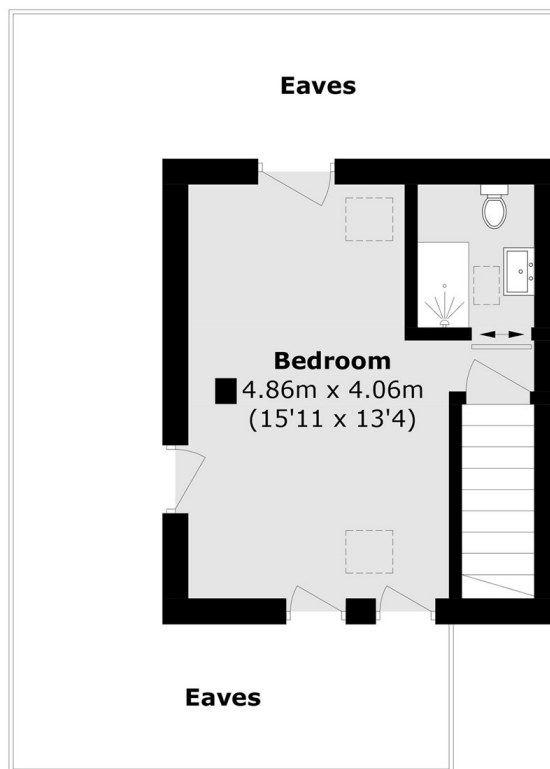
### Features

- Top Floor Flat
- Minutes From Charlton Station
- No Chain
- Split Level
- Two Bedrooms
- Good Condition Throughout

# Charlton Church Lane, London, SE7



## Second Floor



## Third Floor

Total area (approx.): 67.5 sq. m (726.5 sq. ft)  
(Excluding Eaves)