

Crossways, Canterbury, Kent, CT2 7BS

£1,450 Per Month



## Crossways

### Canterbury CT2 7BS

This well maintained, unfurnished family home features an open plan front garden and a secure, enclosed rear garden, with ample off-street parking available nearby.

The ground floor offers an entrance hallway leading to a versatile fourth bedroom or additional reception room, along with a spacious open-plan kitchen/diner complete with white goods and a breakfast bar.

Upstairs comprises three double bedrooms and a family bathroom fitted with a bath, shower, WC, and basin.

Available Mid July 2026

Rent is £1,450 per month

Deposit is £1,673 (equal to 5 weeks rent)

Council tax band: C

Viewing strictly by appointment

Please refer to the fee's tab on our website ([www.sallyhatcher.co.uk](http://www.sallyhatcher.co.uk)) for all information on fee's and deposit options

### Ground Floor / Entrance

#### Kitchen

12'3" x 8'0" (3.756 x 2.451)

#### Dining Room

11'9" x 9'5" (3.592 x 2.892)

#### Living Room

11'9" x 12'3" (3.596 x 3.748)

### First Floor / Stairs

#### Bedroom 3

8'8" x 7'10" (2.642 x 2.412)





**Bathroom**

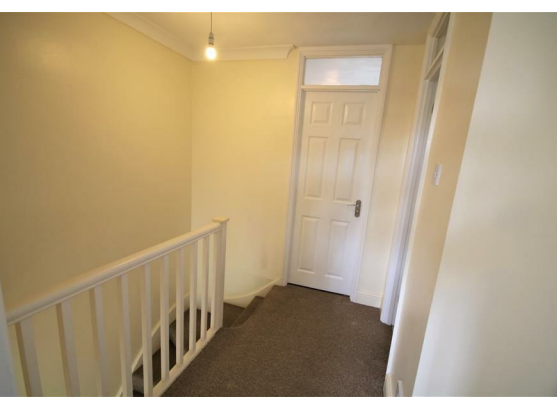
7'8" x 7'1" (2.353 x 2.184)

**Bedroom 1**

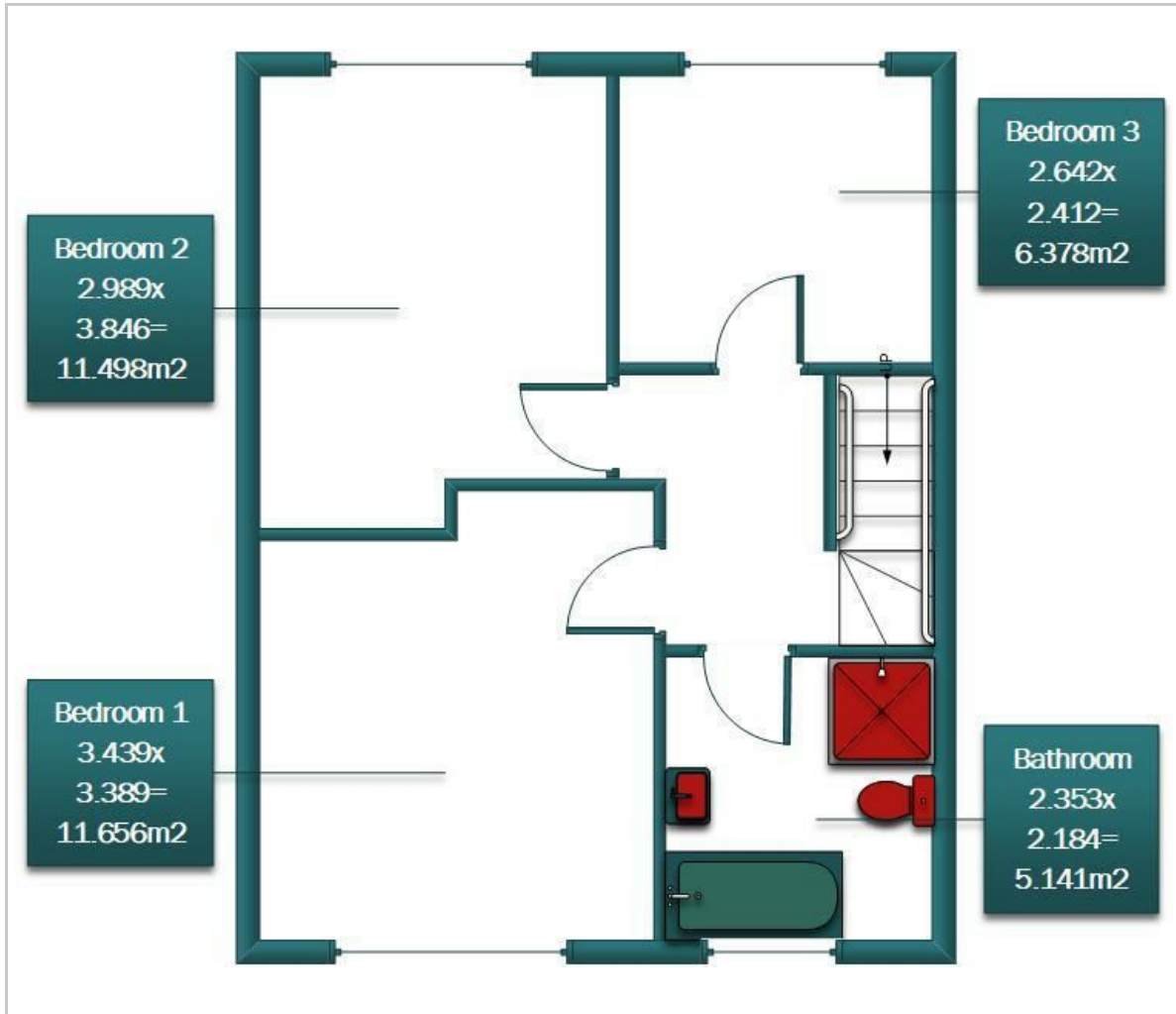
11'3" x 11'1" (3.439 x 3.389)

**Bedroom 3**

9'9" x 12'7" (2.989 x 3.846)



## Floor Plan



## Viewing

Please contact us on 01227 733888 if you wish to arrange a viewing appointment for this property or require further information.

These particulars, whilst believed to be accurate are set out as a general outline only for guidance and do not constitute any part of an offer or contract. Intending purchasers should not rely on them as statements of representation of fact, but must satisfy themselves by inspection or otherwise as to their accuracy. No person in this firm's employment has the authority to make or give any representation or warranty in respect of the property.

## Area Map



## Energy Efficiency Graph

