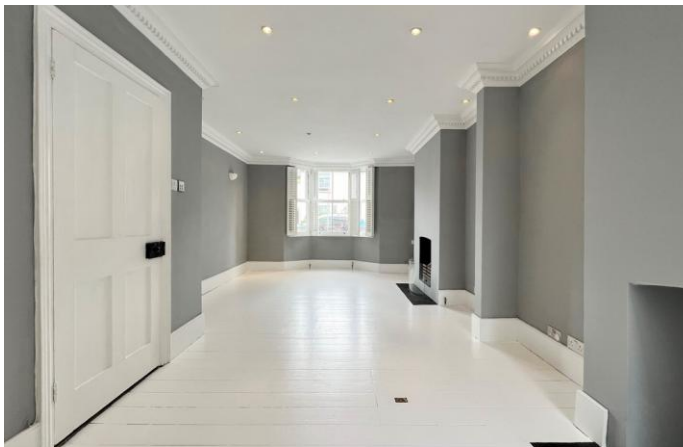




Steven Oates are delighted to offer for let this spacious three-bedroom semi-detached family home, ideally situated on the popular Tamworth Road in Hertford.

The property is well-presented throughout and offers generous living accommodation, including a bright and airy lounge and a well-proportioned kitchen/breakfast room, ideal for modern family living. To the first floor are three good-sized bedrooms and a family bathroom, with the added convenience of a ground floor cloakroom. Externally, the property benefits from both front and rear gardens, providing excellent outdoor space.

Available from 24th April and offered unfurnished.





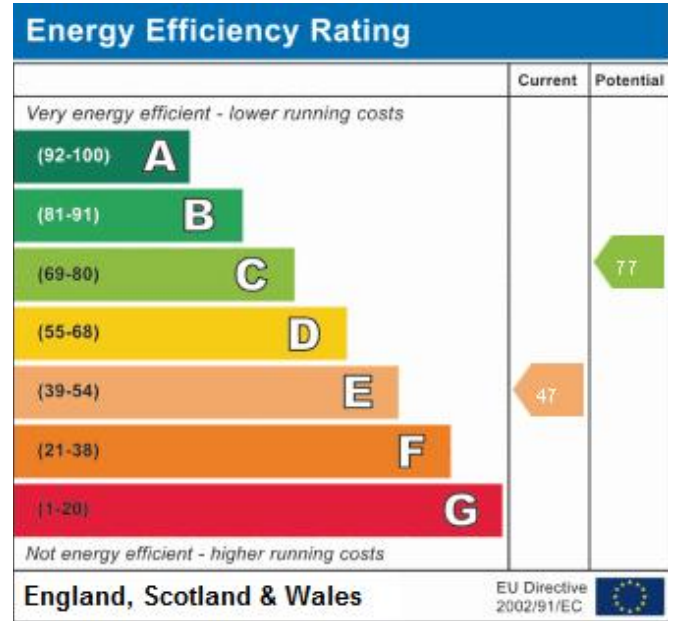
GROUND FLOOR
713 sq.ft. (66.2 sq.m.) approx.



1ST FLOOR
644 sq.ft. (59.9 sq.m.) approx.

TOTAL FLOOR AREA : 1357 sq.ft. (126.0 sq.m.) approx.

Whilst every attempt has been made to ensure the accuracy of the floorplan contained here, measurements of doors, windows, rooms and any other items are approximate and no responsibility is taken for any error, omission or mis-statement. This plan is for illustrative purposes only and should be used as such by any prospective purchaser. The services, systems and appliances shown have not been tested and no guarantee as to their operability or efficiency can be given.
Made with Metropix ©2023





Whilst we endeavour to make our sales particulars fair, accurate and reliable, they are only intended as a general guide to the property. Measurements and distances are approximate. These particulars do not form part of any offer or contract. If there are important matters that are likely to affect your decision to buy, please contact us before viewing the property. Please note that we have not tested the services, equipment or appliances in this property, accordingly, we advise prospective buyers to commission their own survey or service reports before finalising any offer to purchase.