

SNELLERS

ESTATE AGENTS



Essex Avenue, TW7

£2,750 PCM

A recently redecorated three bedroom family home in a fantastic location. Comprising of two reception rooms, large kitchen, two double bedrooms, further single bedroom, family bathroom & downstairs W/C.

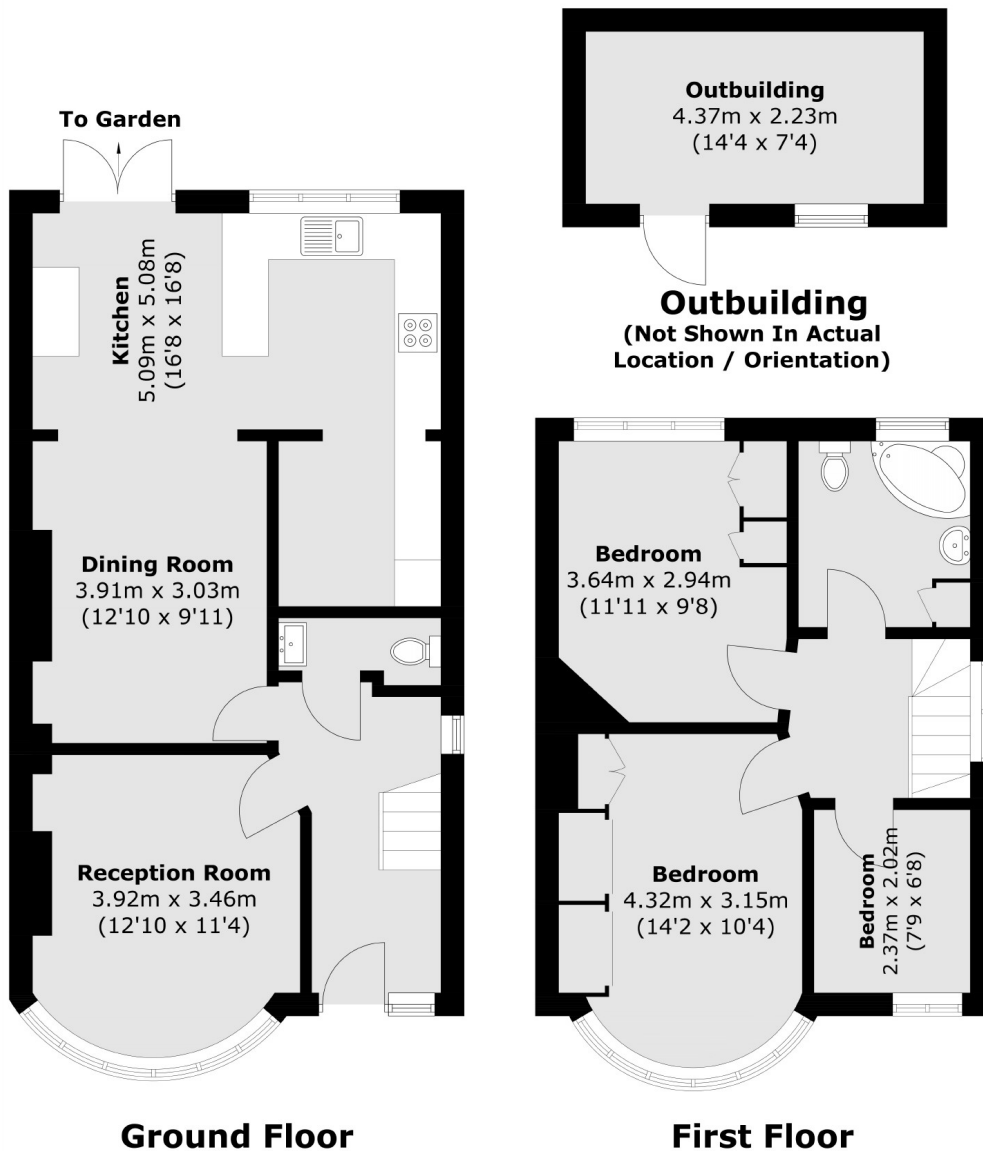
The property further benefits from a garden room, off-street parking and landscaped garden.

Essex Avenue is located within walking distance of Isleworth Station and a range of local amenities.

- Recently Redecorated • Off-Street Parking • Garden •
- Garden Room • Close to Station • Two Reception Rooms •

SNELLERS

ESTATE AGENTS



Total area (approx.): 95.4 sq. m (1026.8 sq. ft)
Outbuilding : 9.9 sq. m (106.6 sq. ft)

Snellers St. Margarets Lettings
36 Crown Road
St Margarets
TW1 3EH
020 8892 0700
stmargaretslettings@snellers.co.uk

Energy Rating: D We aim to make our particulars both accurate and reliable. However they are not guaranteed; nor do they form part of an offer or contract. If you require clarification on any points then please contact us, especially if you're traveling some distance to view. Please note that appliances and heating systems have not been tested and therefore no warranties can be given as to their good working order