



## BEDFORD ROAD, SW4

£495,000

Share of freehold  
Own private front door  
Two double bedrooms  
Private Courtyard  
Approx 862 sq.ft  
Energy rating: c

@marshandparsons  
marshandparsons.co.uk

MARSH &  
PARSONS



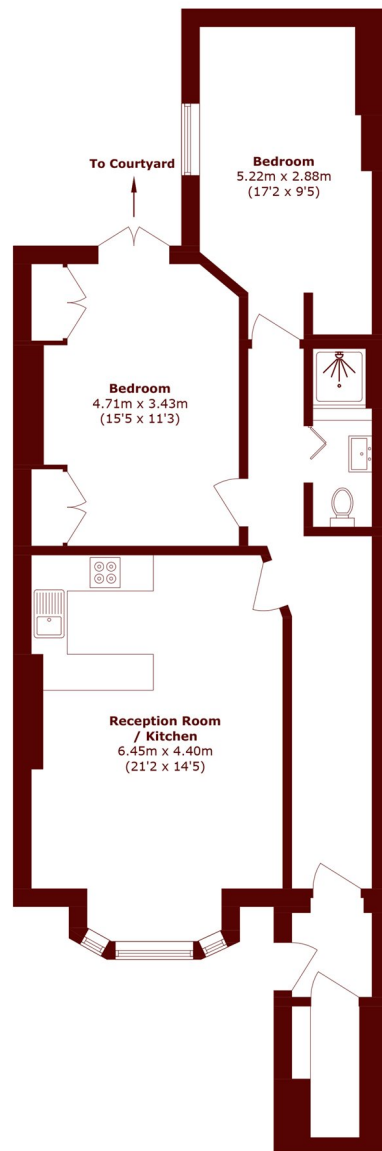
# ABOUT THE PROPERTY

A two double bedroom lower ground floor apartment offering 842 sq ft with its own private entrance, private courtyard all within easy reach of both Clapham North station and the common itself. Share of freehold & chain free.

This share of freehold property comprises a spacious open-plan reception room/kitchen with attractive bay window, providing an excellent entertaining space, two double bedrooms, a bathroom, separate WC and useful access to a private front courtyard.



# STEP INSIDE BEDFORD ROAD



Total area (approx.): 78.2 sq. m (841.7 sq. ft)

**Clapham**  
020 7501 3666

Energy Rating: C We aim to make our particulars both accurate and reliable. However, they are not guaranteed; nor do they form part of an offer or contract. If you require clarification on any points then please contact us, especially if you're traveling some distance to view. Please note that appliances and heating systems have not been tested and therefore no warranties can be given as to their good working order

**MARSH &  
PARSONS**