

**For Rent**



## People Make Places



**Lisle Street, Chinatown W1**

2 bedrooms | 743 sq ft

£775 pw





Ideally suited to two sharers due to the well-proportioned space, this stylish two bedroom apartment has two bathrooms and a semi-open plan kitchen with fantastic natural light. There is ample storage in both bedrooms, an ensuite bathroom and a guest shower room. Available unfurnished late May.

#### What you need to know

- Two bedrooms
- Two bathrooms
- Fourth floor, walk up
- Fitted storage
- Very bright
- Unfurnished
- Rooftop views
- Newly refurbished
- Available late May
- Close to Leicester Square & Piccadilly Circus station





### Overview

A fourth floor, walk-up, two bedroom and two bathroom apartment that is flooded in natural light. With two equal sized bedrooms making this an ideal apartment for two sharers, the apartment has been finished to a modern aesthetic with wooden floors, cast iron radiators and a galley-style contemporary kitchen which is semi open-plan to the living space. Both bedrooms are fitted with ample storage, the master with a large walk-in wardrobe space, while the second has fitted wardrobes. Underfloor heating is fitted in the stylish ensuite bathroom and guest shower room, while additional storage can be found in the hallway. Secondary glazing is fitted for tenant comfort, however, please note that this property is positioned above Ku Bar.

Lisle Street is at the heart of Chinatown and surrounded by restaurants and Eastern culture. Bus services can be reached on nearby Shaftesbury Avenue, while underground services are accessible via Leicester Square (Northern and Piccadilly Lines) and Piccadilly Circus (Piccadilly and Bakerloo Lines) for travel across London. Soho, Covent Garden, Mayfair and St James's are all accessible on foot.

The apartment is available from late May on an unfurnished basis. Westminster Council tax band: G.

**Lisle Street, Chinatown W1**



# People Make Places

London is a collection of inspiring urban villages and one of the most exciting places in the world to live, work & play.

We work with both property owners and their occupiers, sharing the story of these vibrant neighbourhoods, conveying the unique soul & energy to future custodians, the people who'll keep them buzzing.

And unlike many real estate businesses we're not just about buildings, because streets & buildings don't make a neighbourhood.

We're about building relationships, because **people make places**.

MISINTERPRETATION ACT [COPYRIGHT] DISCLAIMER: Tavistock Bow Ltd for themselves and for the vendor(s) of this property whose agents they are, given notice that: 1. These particulars do not constitute, nor constitute any part of, an offer or contract. 2. None of the statements contained in these particulars as to the property are to be relied on as statements or representations of fact. 3. Any intending purchaser or lessee must satisfy themselves by inspection or otherwise as to the correctness of each of the statements contained in these particulars. 4. The vendor(s) or lessor(s) do not make or give and neither Tavistock Bow Ltd nor any person in their employment has any authority to make or give any representation or warranty whatever in relation to this property. Finance Act 1989, Unless otherwise stated all prices and rents are quote exclusive of VAT. Property Misrepresentation Act 1991; These details are believed to be correct at the time of compilation but may be subject to subsequent amendment.

Follow us:     @tavistockbow

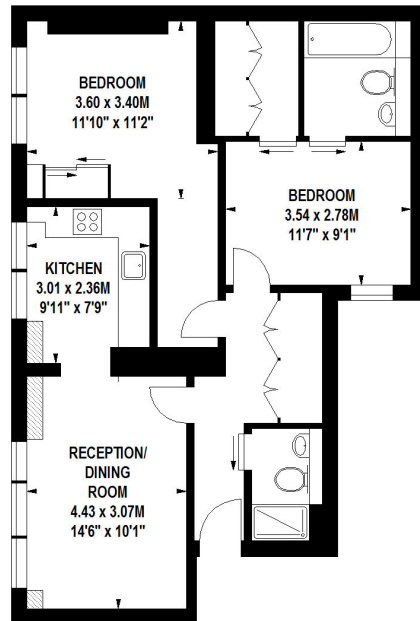
Score	Energy rating	Current	Potential
92+	<b>A</b>		
81-91	<b>B</b>		
69-80	<b>C</b>		
55-68	<b>D</b>	64 D	66 D
39-54	<b>E</b>		
21-38	<b>F</b>		
1-20	<b>G</b>		

## Lisle Street, WC2H

Approximate gross internal area

69 sq m / 743 sq ft

 Under 1.5m head height



### Fourth Floor

Floor Plan produced for Tavistock Bow by Mays Floorplans © . Tel 020 3397 4594  
 Illustration for identification purposes only, not to scale  
 All measurements are maximum, and include wardrobes and window bays where applicable

**tavistockbow**

21 New Row, Covent Garden,  
 London, WC2N 4LE

t: 020 7477 2177  
 e: hello@tavistockbow.com  
 w: tavistockbow.com



**Lisle Street, Chinatown W1**