



18 Banks Howe, Onchan, Isle of Man, IM3 2ET  
Asking Price £669,950

- Superb Four Bedroom Detached Home In Desirable Banks Howe Location
- Principal Bedroom With En-Suite Plus Three Additional Double Bedrooms
- Stunning Sea Views Across Douglas Bay From Living Room Balcony
- Integral Double Garage With Internal Access From Lower Ground Floor
- Spacious Living Accommodation With Multiple Reception Areas
- Private Wrap Around Garden With Mature Hedging And Sheltered Setting



A superbly presented four-bedroom detached home located in the highly desirable area of Banks Howe, enjoying attractive sea views from the principal living areas and offering spacious, versatile accommodation throughout. The property also benefits from an integral double garage and beautifully maintained surrounding gardens.

Upon entering the home, you are welcomed by a generous entrance hallway that provides access to the main living accommodation positioned to the right-hand side. The bright and spacious living room is a standout feature of the property, complete with sliding doors opening onto an impressive 20-foot-wide balcony. This elevated space provides a wonderful vantage point to enjoy the views across Douglas Bay, creating an ideal setting for relaxing or entertaining.

The well-appointed kitchen also enjoys distant sea views and is thoughtfully arranged for modern family living, offering ample workspace and storage. Adjacent to the kitchen, the dining room provides an excellent additional reception space, perfect for family meals or hosting guests.

Stepping down from this level is the principal bedroom, which benefits from its own en-suite bathroom. Two further double bedrooms are positioned nearby and are served by a well-appointed family bathroom, while a separate cloakroom adds further storage.

The lower ground floor provides additional flexible accommodation, including a fourth double bedroom with its own en-suite bathroom. A spacious utility room is also located on this level, along with internal access to the integral double garage.

Externally, the property enjoys a superb wrap-around garden that offers a high degree of privacy. Mature hedging surrounds the grounds, creating a sheltered and peaceful outdoor environment ideal for relaxation.







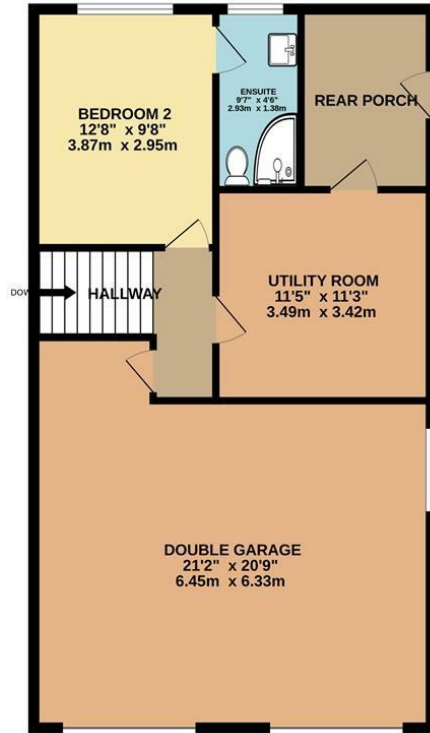




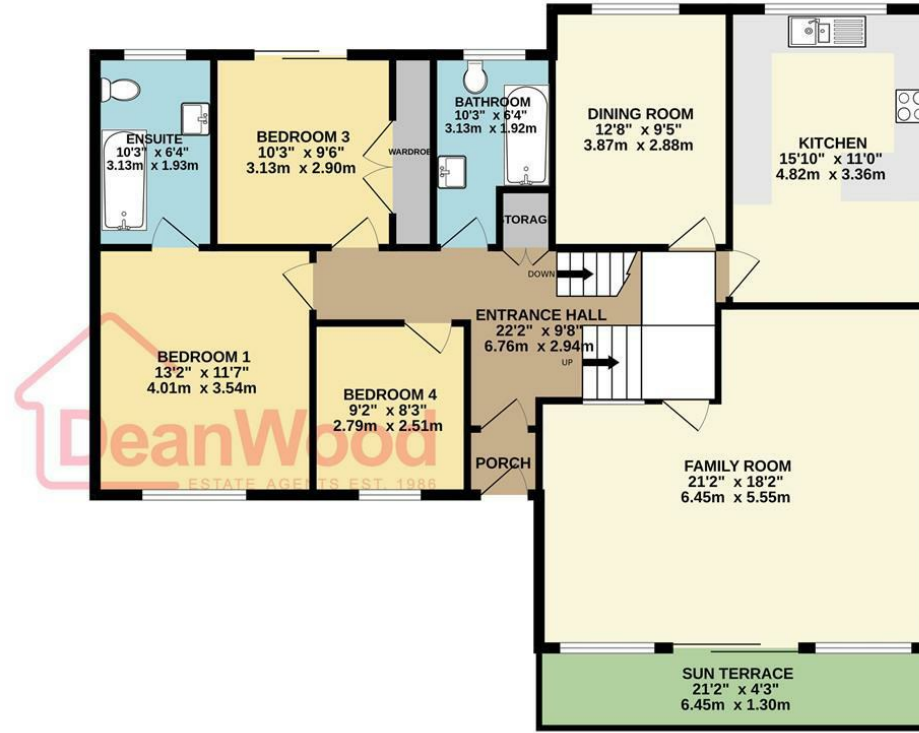




LOWER GROUND FLOOR  
810 sq.ft. (75.2 sq.m.) approx.



GROUND FLOOR  
1271 sq.ft. (118.1 sq.m.) approx.



TOTAL FLOOR AREA: 2081 sq.ft. (193.3 sq.m.) approx.

Not to scale for identification purposes only  
Made with Metropix ©2026



**DOUGLAS**

37 VICTORIA STREET  
DOUGLAS  
ISLE OF MAN IM1 2LF

T 01624 620606  
F 01624 677363  
E info@deanwood.co.im

**CASTLETOWN**

COMPTON HOUSE  
9 CASTLE STREET CASTLETOWN  
ISLE OF MAN IM9 1LF

T 01624 825995  
F 01624 825996  
E castletown@deanwood.co.im

**RAMSEY**

LEZAYRE HOUSE  
87 PARLIAMENT STREET  
RAMSEY ISLE OF MAN IM8 1AQ

T 01624 816111  
F 01624 816588  
E ramsey@deanwood.co.im

These particulars are for information purposes only. They do not constitute or form any contract nor should any statement contained herein be relied upon as a representation of fact. Neither the vendor nor DeanWood Agencies Limited ('the firm'), nor any officer or employee of the firm accept liability or responsibility for any statement contained herein. The vendor does not by these particulars, nor does the firm, nor does any officer or any employee of the firm have any authority to make or give any representation or warranty whatsoever as regards the property or otherwise. It is the sole responsibility of any person interested in the property described in these particulars to make all proper enquiries and searches to verify the description of the property and all other particulars herein.

FOR MORE PROPERTIES VISIT OUR WEBSITE @ [deanwood.im](http://deanwood.im)