

7 Bethel Place, Nantyglo

£279,950 Freehold

End Link Property • Three Bedrooms • En-Suite • Ground Floor WC • First Floor Bathroom • Living Room • Open Plan Kitchen/Dining/Living Area • Beautiful Garden with Mountain Views • Double Driveway • EPC - B Council Tax Band - E



1 Bethcar Street, Ebbw Vale, Gwent, NP23 6HH
 Tel: 01495 302301 Email: ebbwvale@bidmeadcook.co.uk
www.bidmeadcook.co.uk

A tastefully decorated end link property set within a cul de sac position of Nantyglo. Conveniently located for access to the A465 Heads of the Valley Road and local amenities.

The accommodation comprises entrance hallway, cloakroom WC, living room, open plan kitchen/dining/living area, three bedrooms, en-suite shower room and first floor bathroom. Benefits include a modern fitted kitchen with integrated appliances and quartz worktops, a feature multi fuel burning stove, under floor heating, upvc double glazing, a gas central heating system, an enclosed rear garden with outdoor storage and mountain views, side access, and a double driveway to the front of the property.

This property must be viewed to fully appreciate.



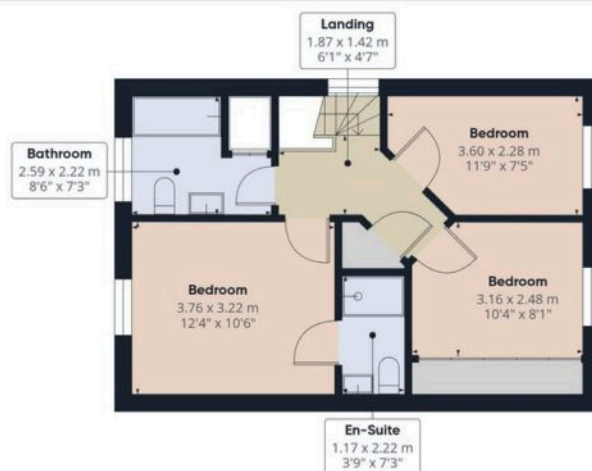
Nantyglo was once a prime village in the coal industry. Today, the mines have long since closed and the village is now filled with a peaceful and quiet atmosphere. It is surrounded by the towns and villages of Blaina, Brynmawr, Ebbw Vale and Abertillery and is situated close to the A465 Heads of the Valley Road to Abergavenny and Merthyr Tydfil. There are also passenger rail lines at Ebbw Vale and Llanhilleth which offer regular transfers to Cardiff city centre. Council Tax band: E

Tenure: Freehold





Floor 0



Floor 1

Approximate total area^m
95 m²
1025 ft²

(1) Excluding balconies and terraces

Calculations reference the RICS IPMS 3C standard. Measurements are approximate and not to scale. This floor plan is intended for illustration only.

GIRAFFE360

You can include any text here. The text can be modified upon generating your brochure.

You can include any text here. The text can be modified upon generating your brochure.

