



Latchmere Road, SW11

£3,500 Per calendar month

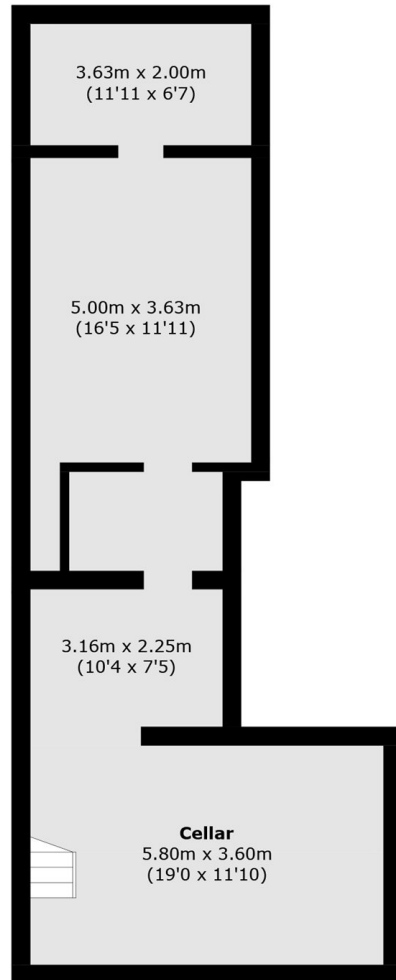
A spacious ground floor maisonette extending to approximately 1,500 sq ft (including basement storage), offering generous and versatile living space. The property features a bright eat-in kitchen and reception room, three bedrooms, a modern family bathroom, and a low-maintenance private garden perfect for entertaining or relaxing outdoors. Further benefits include its own private entrance.

Latchmere Road is perfect for commuting from Clapham Junction into Central London and to Gatwick Airport. The green spaces of Clapham Common and Battersea Park are nearby, as are plenty of local pubs, restaurants and shops.

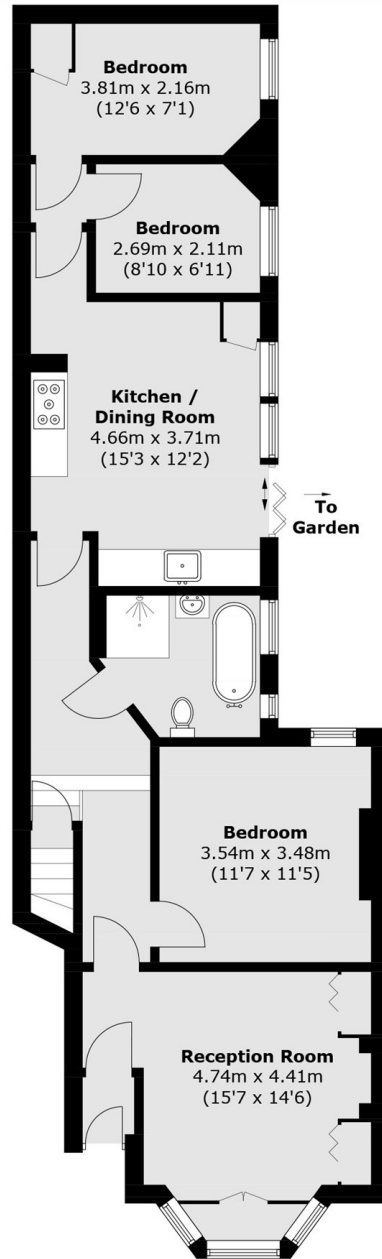
Features

- Ground Floor Maisonette
- Large Reception Room
- Three Bedrooms
- Private Garden
- Large Basement
- Available Now

Latchmere Road, London, SW11



Basement



Ground Floor

Total area (approx.): 144.0 sq. m (1,550.0 sq. ft)
(Including Basement)