

SIGNATURE

NORTH EAST

OFFICIALLY RATED THE NO.1 ESTATE AGENT IN THE NORTH EAST





📍 Fenwick Close, Newcastle Upon Tyne NE27 0RL

Fenwick Close, Newcastle Upon Tyne NE27 0RL

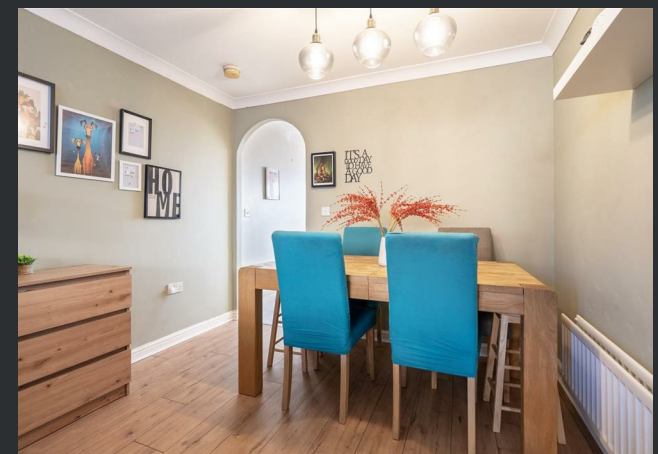
Offers Over £116,000

Signature North East welcomes you to this delightful two-bedroom second-floor apartment, ideally located in the popular Backworth area. With convenient amenities and green spaces close by, this home offers a balanced lifestyle perfect for both relaxation and everyday practicality. The area is exceptionally well connected, with Northumberland Park Metro Station providing excellent transport links for easy commuting.

Step through the entrance hallway into the welcoming living room, where a large bay window fills the room with light and character. The living room flows into a dedicated dining area, offering a wonderful space for entertaining. From here, step into the kitchen, which offers attractive wall and base units along with practical countertops, making it a functional and inviting space.

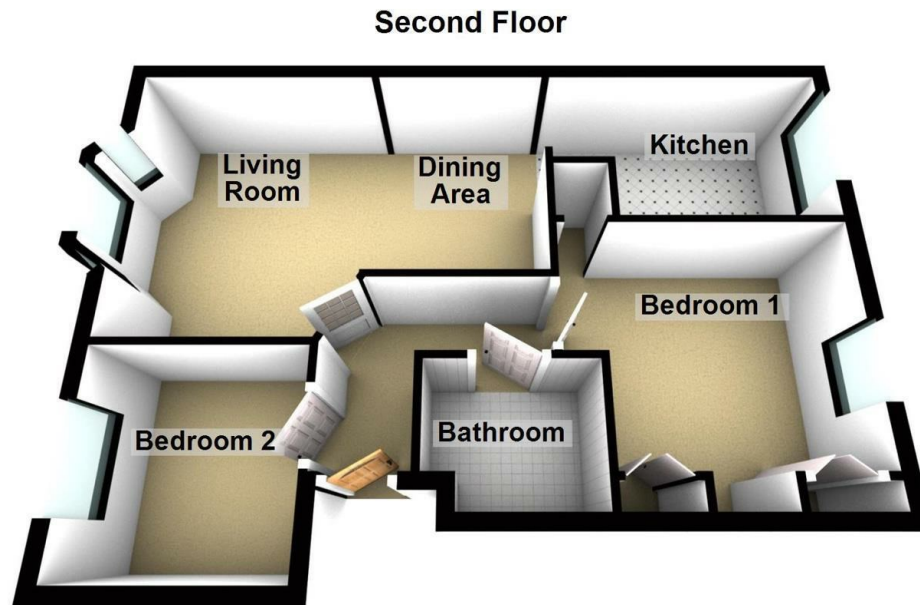
Continuing through the apartment, you'll find two well-sized double bedrooms, ensuring comfortable accommodation. The principal bedroom benefits from built-in storage, providing excellent organisation solutions. Completing this charming home is the family bathroom, which features a bathtub, a walk-in shower, a wash basin and W.C.

Externally, the property enjoys a convenient and well-connected location with green spaces nearby, ideal for outdoor enjoyment. Off-street parking is available via a designated parking space, adding further practicality to this appealing apartment.



PLEASE NOTE THAT THE VENDOR HAS CERTIFIED THE PROPERTY INFORMATION AND IMAGES.

PROPERTY FLOORPLAN



Total area: approx. 53.6 sq. metres (577.3 sq. feet)

Measurements:

Living Room
12'2" x 10'0"

Kitchen
12'5" x 7'4"


Dining Area
9'4" x 7'3"

Bedroom One
9'3" x 10'0"

Bedroom Two
8'5" x 8'4"

Bathroom
6'0" x 6'8"

Energy Efficiency Rating

	Current	Potential
<i>Very energy efficient - lower running costs</i>		
(92 plus) A		
(81-91) B	81	81
(69-80) C		
(55-68) D		
(39-54) E		
(21-38) F		
(1-20) G		
<i>Not energy efficient - higher running costs</i>		
England & Wales	EU Directive 2002/91/EC 	





More 5 Star Customer Reviews than any other Agent based in the North East on allAgents.co.uk



SALES

LETTINGS

FINANCE

LAW

WE COVER THE WHOLE OF THE NORTH EAST

Whitley Bay
0191 251 3344

Cramlington
01670 897 213

Tynemouth
0191 296 6689

Morpeth
01670 513 966

Ponteland
01661 820 082

Wallsend
0191 432 4151

Alnwick
01665 511 800

Heaton
0191 432 4275

Forest Hall
0191 266 9966

Other locations
0191 640 3523

Newcastle
0191 640 2284

Durham
0191 303 8252

Gosforth
0191 640 3523

Sunderland
0191 543 6390

Whickham
0191 432 5102

Gateshead
0191 432 4294

Jesmond
0191 281 1037

Killingworth
0191 640 3602

Ryton
0191 413 9845

Head Office &
Lettings
0191 253 4815

*Highest recommended 5-star reviews than any other Estate Agent based in the North East on allAgents.co.uk - The UK's Largest Customer Review Website for the Property Industry & Awarded Best Estate Agency 2018 & 2019 - North East England by SME News