



Sterling Mansions

Leman Street, E1

Asking Price £1,000,000

Elegant duplex with private terrace, luxury amenities, concierge, pool, gym, and cinema within prestigious Sterling Mansions moments from Aldgate offering refined City living and exceptional connectivity with spacious interiors throughout.

CHESTERTONS



Sterling Mansions

75 Leman Street, E1

- Private terrace with tranquil courtyard setting
- Two bedroom duplex with generous proportions
- Contemporary interiors with premium finishes throughout
- Principal bedroom with luxurious en suite
- Second double bedroom with stylish bathroom
- Gym swimming pool and spa access
- Twenty four hour concierge and security
- Moments from Aldgate and Aldgate East



Set within the sought after Sterling Mansions on Leman Street, this exceptional two bedroom two bathroom duplex apartment presents refined City living with private outdoor space and a full suite of resident amenities, designed for both comfort and elegant entertaining.

Arranged over two levels, the home offers a considered layout with generous proportions and high quality finishes throughout. The raised ground floor provides an impressive reception and dining space, ideal for hosting or relaxing in style. On the lower level, both double bedrooms open directly onto a substantial private courtyard terrace, creating a tranquil retreat rarely found in such a central location. The principal suite benefits from a luxurious en suite with separate bath and shower, alongside a dedicated dressing area, while the second bedroom is served by a beautifully finished bathroom. A separate guest WC adds further practicality.

Residents enjoy access to a twenty four hour concierge, private gym, swimming pool, spa, cinema and business lounge, all set within two acres of landscaped gardens and a vibrant plaza setting. Positioned moments from Aldgate and Aldgate East, the apartment offers seamless connections across London with Spitalfields and Brick Lane nearby, along with a selection of boutique cafes, restaurants and everyday conveniences that enhance the appeal of this well established and highly desirable development for discerning buyers seeking prestige London living.

Tenure: Leasehold 986 years 1 months

Service Charge: £14000 Pa

Ground Rent: £600 Pa

Local Authority: Tower Hamlets

Council Tax Band: G

Score	Energy rating	Current	Potential
92+	A		
81-91	B	83 B	83 B
69-80	C		
55-68	D		
39-54	E		
21-38	F		
1-20	G		

Chestertons Tower Bridge Sales

220 Tower Bridge Road

Tower Bridge

London

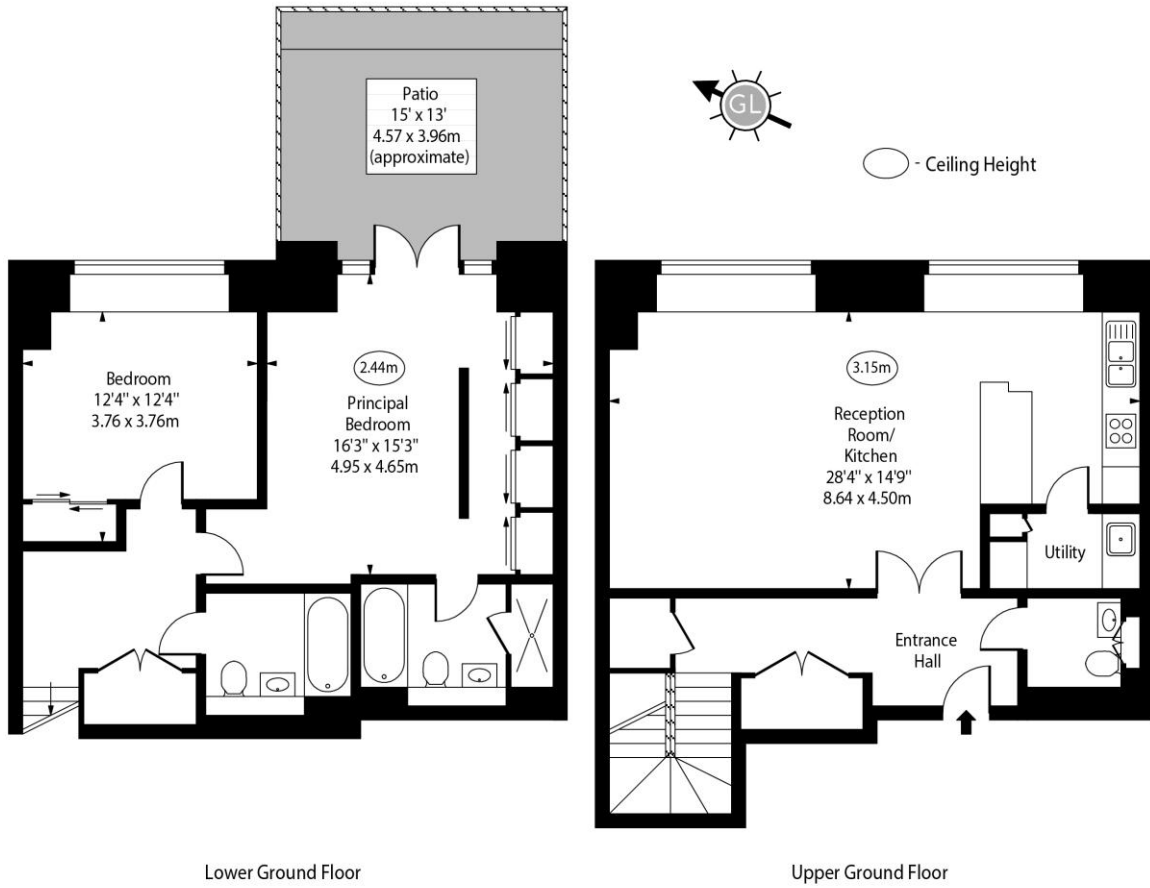
SE1 2UP

towerbridge@chestertons.co.uk

020 7357 7999

chestertons.co.uk

Sterling Mansions,
Leman Street, E1



Lower Ground Floor

Upper Ground Floor

Approx Gross Internal Area 1250 Sq Ft - 116.13 Sq M

Every attempt has been made to ensure the accuracy of the floor plan shown. However, all measurements, fixtures, fittings, and data shown are approximate interpretations and for illustrative purposes only. Measured according to the RICS. Not To Scale.

www.goldlens.co.uk
Ref. No. 031553K

