



## New Cross Road, SE14

£595,000

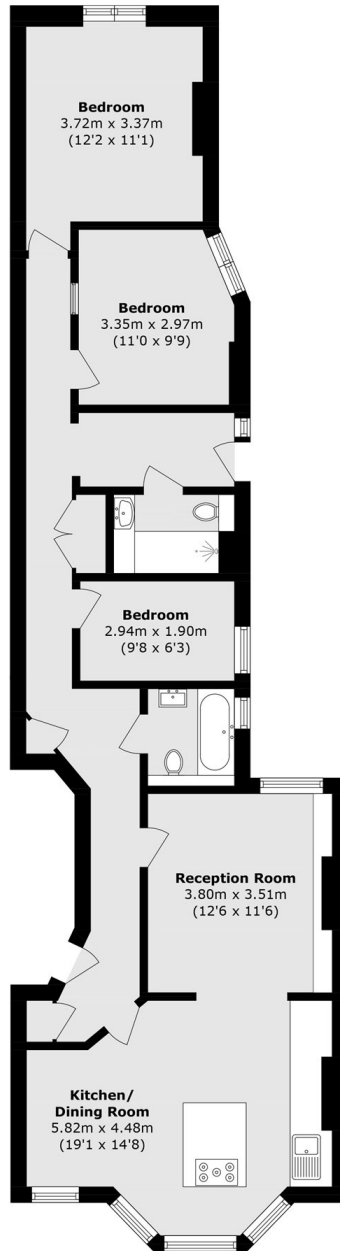
Presenting this impressive home, the property offers exceptionally well-balanced accommodation throughout, comprising three generous bedrooms, two contemporary bathrooms, a superb open-plan kitchen/dining room framed by elegant bay windows, and a spacious separate reception room providing excellent versatility for both everyday living and entertaining.

Further benefits include access to beautifully maintained communal gardens, alongside a highly desirable location moments from the excellent amenities, cafés, green spaces and superb transport connections that continue to make New Cross one of South East London's most sought after neighbourhoods.

### Features

- Three Bedrooms
- Large Kitchen With Island
- Communal Gardens
- Two Bathrooms
- Close To Transport Links

# New Cross Road, London, SE14



Total area (approx.): 114.0 sq. m (1227.1 sq. ft)