

# LODESTONE



*Stoodly Barn, North Wootton*





# Stoodly Barn, North Wootton

BA4 4AJ

Offers Over £1,560,000

4   
Bedrooms

4   
Bathrooms

3   
Receptions

## PROPERTY FEATURES

- Unique contemporary family house
- 4 bedrooms, 4 bathrooms
- Stunning views
- Approx 4,000 sq ft of accommodation
- Approx 3 acres of gardens and land
- Gym, sauna and cinema room
- Immaculately presented
- No onward chain
- Eco friendly
- Double garage and workshop
- Summer House with shower room





Nestling in the heart of the Somerset countryside, Stoodly Barn is a truly unique family home situated in the most glorious of settings and defined by 21st technology that sets new standards in combining luxurious living with energy efficiency.

Originally renovated in 2012, this inspirational home has been imaginatively designed and enhanced using the highest quality building materials and with extraordinary attention to detail. The house is approached via a pretty, illuminated pathway that climbs alongside a double garage and through manicured lawns to the front door. A magnificent reception hall is defined by glazed panels on both the roof and the walls that allow natural light to pour into the space. Off the hall is a stylish kitchen dining space and a comfortable living room, each partitioned with fine timber slatted panels that can be opened to create one open plan living space.

The kitchen is a spectacular room enhanced by an abundance of natural light that pours in through fully glazed doors that open fully to the garden and frame the space. This space is a celebration of minimalist contemporary design and features a majestic island and a built-in illuminated table. It is luxuriously furnished with a range of integrated appliances that include an American style Miele fridge freezer, a Miele dishwasher, a Quooker tap, two Miele ovens, a steamer, and a microwave oven. Fine granite worktops incorporate a Bora vented induction hob discreetly positioned in the island top and perfectly complements a Quooker tap which delivers both boiling water and filtered drinking water.

Underfloor heating warms the Kitchen beneath luxurious tiles that grace the floor. Oak beams soar to the apex of the ceiling and lend real character to a beautiful seating area which is perfectly positioned to enjoy the sensational view of the garden. Of particular note are the zero-threshold single track sliding windows that allow its entire surrounding frame to be concealed. This expansive opening offers maximum light with the fewest possible visible profiles – in essence the architectural barrier between inside and out ceases to exist.

Off the kitchen area is a cloakroom, a perfectly hidden utility room and a guest bedroom with en-suite bathroom.

Beyond the bedroom is a beautiful glass panelled spiral staircase that leads down to a study area on a lower ground floor. Natural light pours through more fully glazed panels and lights up a truly versatile space.





This room opens to a superb gym fully equipped with mirrored walls and bespoke flooring. Perfectly complimenting the gym is a luxurious steam room, sauna, and a fabulous cinema room equipped with a theatre system and complete with cinema mode lighting.

An integrated Sonos sound system impresses with speakers in the kitchen, living room, gym, principal suite and even the sauna. These exceptional facilities bring a new dimension to what is already a remarkable home.

The sitting room accessed from the hall is beautifully proportioned and features 'A' frame oak beams that grace the ceiling, an integrated glazed fireplace and a beautiful, exposed stone wall, that extends through much of this part of the house. A corridor runs off this room and gives access to two further bedrooms, a family bathroom, and a principal bedroom with en-suite bathroom. All the bedrooms are elegantly furnished whilst doors open from the principal bedroom to the garden and allow sensational views of the Somerset countryside. The bathrooms are lavishly equipped with oversized showers, heated towel rails, illuminated mirrors and high-end fixtures and fittings.

### Summary

Stoodly Barn is a home where technology and architecture gel perfectly, and the house makes the most of its breath-taking position with technical, material, and aesthetic innovation throughout.

The property's eco credentials are unusually impressive – photovoltaic panels provide green energy and air conditioning is built in on the ground floor. LPG powers the boiler, and this along with a solar thermal panel system heats the water.

The Summer House Situated above the main building is a pretty, separate dwelling or studio with fully retractable glazed doors that allow beautiful, uninterrupted views to the South. It comprises of a living room (warmed with underfloor heating) with its own kitchenette and a fully equipped en-suite bathroom.

A rainwater collection system operates such that the water can be treated and reused on the premises. The building is mostly clad in cedar wood and comes with a sedum roof and wall. This is the perfect spot to enjoy a summers evening in style.



## Outside

To the front of the house is a generous double garage with an adjoining workshop and parking for several cars. The garage is equipped with the potential for an EV charger. The grounds and gardens are beautiful and lie mainly to the South and West of the property.

The exterior of the house, terrace and the walkway can be illuminated at night. Immediately adjacent to the house is a beautiful South facing timber terrace perfect for summer entertaining. The gardens are home to some beautiful crab apple trees and some oak saplings that will light up the landscape in the future.

## Situation

Stoodly Barn is enviably situated in the pretty hamlet of Worminster within the heart of the Somerset countryside. It is one of a cluster of houses and is part of a close-knit and friendly community. Local amenities include nearby Brown Cow Organics ([www.browncoworganics.co.uk](http://www.browncoworganics.co.uk)) who sell beef, chicken and yogurt and there is a Co-Op convenience store in nearby Pilton.

This fabulous family house is perfectly situated just minutes from Wells, the smallest Cathedral city in England. The high street is vibrant and home to a good selection of chain stores (such as Boots and Waterstones) and a variety of independent shops, restaurants, and pubs. There is a twice weekly market offering good local produce, delicious fresh fish, meat products and a variety of street food. Wells also has a choice of supermarkets that include Waitrose, Tesco, Morrisons and Lidl.

At the very heart of the city is the stunning mediaeval Cathedral, Bishop's Palace with its superb garden, and Vicars' Close (reputed to be the oldest surviving residential street in Europe). Wells is fast becoming the South West's go-to place for festivals with annual food, literary, comedy and theatre events. The cafe culture within the Market Place offers a wonderful opportunity to sit and watch the world go by.



With both the Cathedral School and the Cathedral itself, there are all year opportunities for musical concerts and other events, and regular shows in the Little Theatre and a multi-screen cinema. The ever-popular town of Bruton is also close by and is well known for its restaurants "At the Chapel", The Pharmacy and "Da Costa" at the world-renowned Hauser & Wirth Gallery. The Newt in Somerset (not far from Castle Cary) is a superb Grade II listed house and estate that has been transformed into a hotel, spa and visitor centre and features a restaurant using fresh produce from the kitchen garden, a café, and a farm shop together with wonderful woodland walks and gardens. For further shopping and recreational activities Bath and Bristol are both within easy driving distance.

### Schools

Local Schools include Millfield, Downside, Wells Cathedral School, the Bruton schools and All Hallows prep school. Transport links are good with a mainline railway station in Castle Cary with services to London Paddington

### MATERIAL INFORMATION

In compliance with The Consumer Protection from Unfair Trading Regulations 2008 and National Trading Standards Estate and Letting Agency Team's Material Information in Property Listings Guidance.

#### PART A

**Local Authority:** Somerset Council

**Council Tax Band:** G

**Guide Price:** Offers in Excess of £1,560,000

**Tenure:** Freehold

#### PART B

**Property Type:** Link Detached

**Property Construction:** Standard

**Number and Types of Rooms:** See Details and Plan, all measurements being maximum dimensions provided between internal walls

**Electricity Supply:** Mains Electricity and Photovoltaics

**Water Supply:** Borehole Water

**Sewerage:** Private Drainage – Shared between four barns.

**Heating:** LPG Gas and Air Source Heat Pump.

**Broadband:** Both the main house and the summer house benefit from high-speed broadband provided by Starlink.

**Mobile Signal/Coverage:** Please refer to Ofcom website.

<https://checker.ofcom.org.uk/en-gb/mobile-coverage>

**Parking:** Double Garage and Parking for Multiple Vehicles

#### PART C

**Building Safety:** The vendor is not aware of any Building Safety issues. However, we would recommend that the purchaser's engage the services of a Chartered Surveyor to confirm.

**Restrictions:** A list of restrictive covenants in place on the property is available from the agents, Lodestone Property.

**Rights and Easements:** There are rights of way affecting this property due to a shared access road. Details of which can be requested from the agents, Lodestone Property.

**Flood Risk:** Low Risk

**Coastal Erosion Risk:** N/A

**Planning Permission:** Planning for the Summer Studio which was built by the previous owner. Planning for a kitchen extension applied for by previous owner.

**Accessibility/Adaptations:** N/A

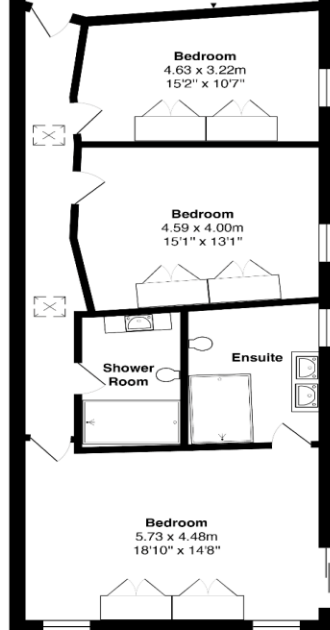
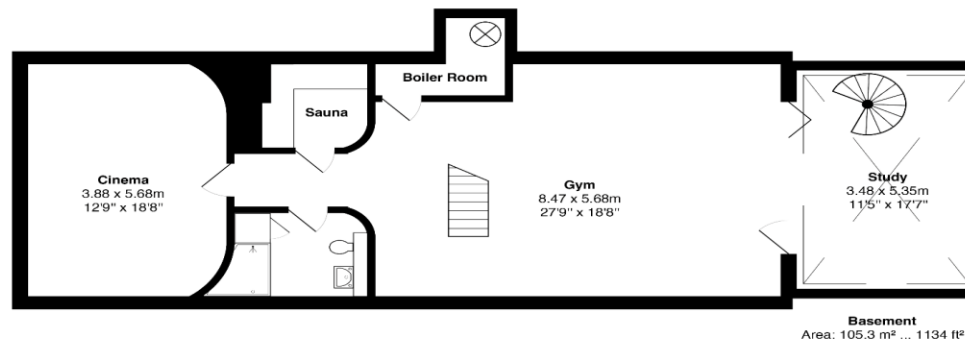
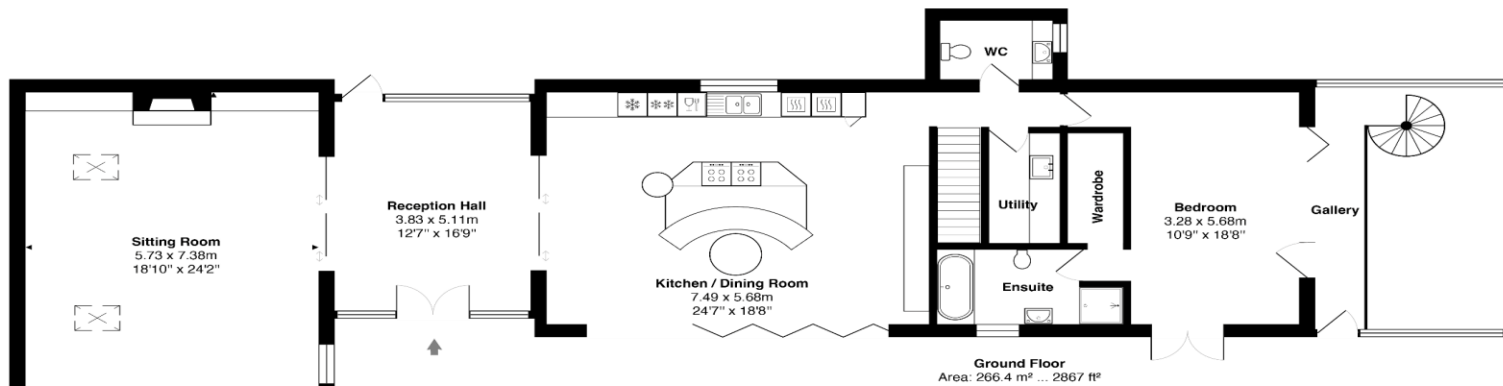
**Coalfield Or Mining Area:** N/A

**Energy Performance Certificate:** B Rating

No other Material disclosures have been made by the Vendor. This Material Information has been compiled in good faith using the resources readily available online and by enquiry of the vendor prior to marketing. However, such information could change after compilation of the data, so Lodestone cannot be held liable for any changes post compilation or any accidental errors or omissions.

Furthermore, Lodestone are not legally qualified and conveyancing documents are often complicated, necessitating judgement on our part about which parts are "Material Information" to be disclosed. If any information provided, or other matter relating to the property, is of particular importance to you please do seek verification from a legal adviser before committing to expenditure.

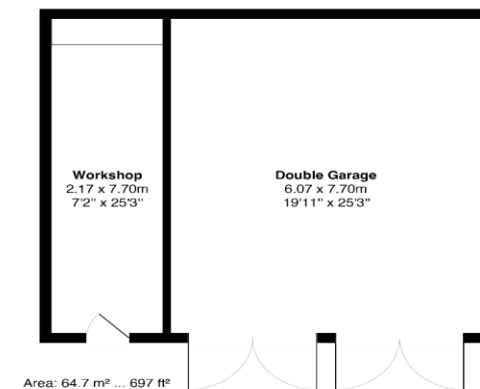
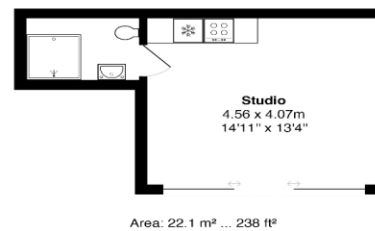




## Stoodly Barn, Worminster, North Wootton



Approximate gross internal floor area of main building - 371.7 m<sup>2</sup> / 4,001 ft<sup>2</sup>



Every care has been taken with the preparation of these details, in accordance with the Consumer Protection from Unfair Trading Regulations 2008, but complete accuracy cannot be guaranteed. If there is any point, which is of particular importance to you, please obtain professional confirmation. Alternatively, we will be pleased to check the information. These details do not constitute a contract or part of a contract. All measurements quoted are approximate. Photographs are provided for general information and cannot be inferred that any item shown is included in the sale. The fixtures, fittings & appliances have not been tested and therefore no guarantee can be given that they are in working order. No guarantee can be given with regard to planning permissions or fitness for purpose. Energy Performance Certificates are available on request.

**Bruton**

Fry's Halt  
Station Road  
Bruton, Somerset  
BA10 0EH  
Tel: 01749 605099  
[bruton@lodestoneproperty.co.uk](mailto:bruton@lodestoneproperty.co.uk)

**Wells**

Melbourne House  
36 Chamberlain Street  
Wells, Somerset  
BA5 2PJ  
Tel: 01749 605088  
[wells@lodestoneproperty.co.uk](mailto:wells@lodestoneproperty.co.uk)

[www.lodestoneproperty.co.uk](http://www.lodestoneproperty.co.uk)

