



Gosterwood Street, SE8

£325,000

Situated on a quiet street in Deptford, this first-floor flat offers a comfortable and practical home.

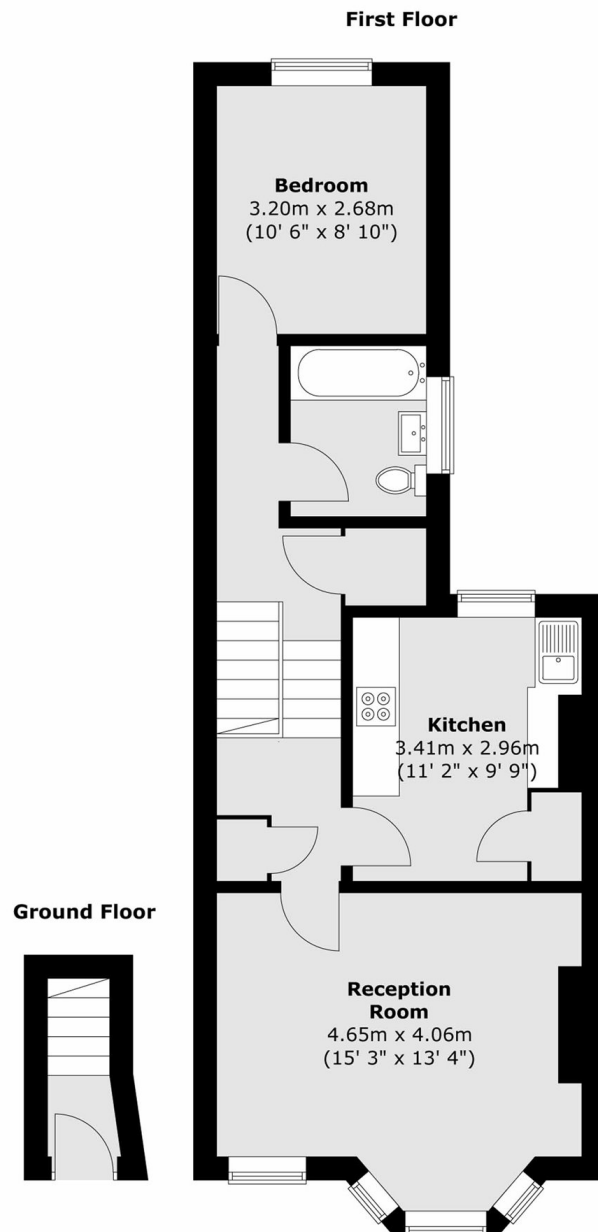
The kitchen has been updated in recent years with black wall tiles, white gloss base and wall units as well as a granite effect worktop. The lounge features two windows, including a bay window flooding the room with natural light. The double bedroom faces the back of the property providing a leafy outlook.

Additional benefits include; permit parking, double glazing throughout and gas central heating.

Features

One Bedroom First Floor Flat
Low Service Charge and
Ground Rent
116 Year Lease
Gas Central Heating
Double Glazing
Quiet Location Close To
Transport

Gosterwood Street, London, SE8



Total area (approx.) : 54.4 sq. m (585 sq. ft)

Dexters

New Cross
256 New Cross Road
London
SE14 5PL
Sales
020 7313 3660

Energy Rating: C. We aim to make our particulars both accurate and reliable. However they are not guaranteed; nor do they form part of an offer or contract. If you require clarification on any points then please contact us, especially if you're traveling some distance to view. Please note that appliances and heating systems have not been tested and therefore no warranties can be given as to their good working order.

 **RICS** | Regulated
Estate Agent
and Letting Agent

[dexters.co.uk](https://www.dexters.co.uk)