

Woburn Place, WC1H

£255,000

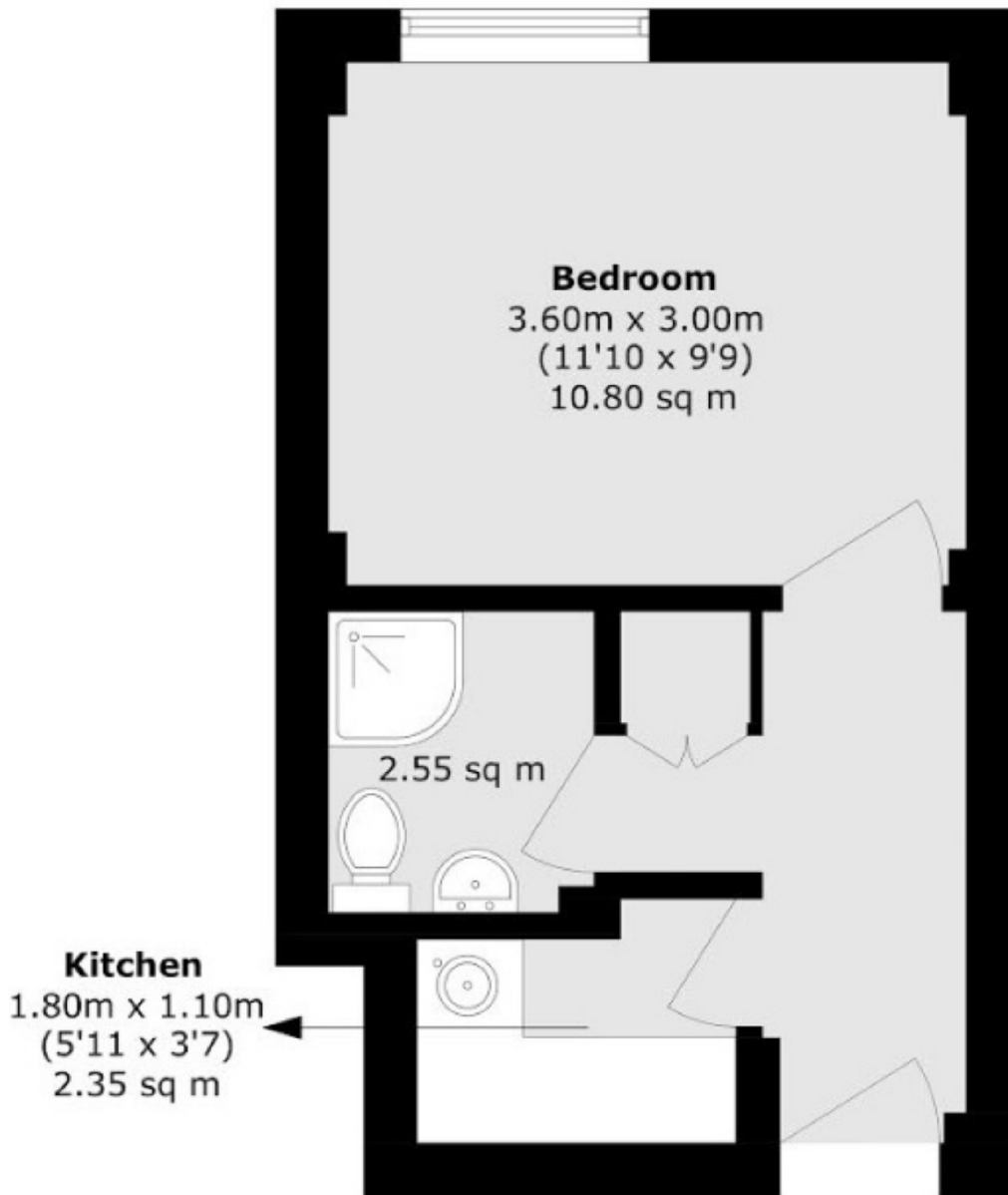
Located on the ninth floor with views of Russell Square, this studio apartment will make a perfect London base or first home. There is an open-plan living/bedroom, a separate kitchen and family bathroom. Heating and hot water is included in the service charge.

Positioned close to Russell Square tube station and the Brunswick Centre which includes a Waitrose supermarket and many other shops and restaurants. The West End and the Eurostar terminal are nearby.

Features

- Separate Kitchen
- Share Of Freehold
- 24 Hour Concierge
- Lift Access
- Block Newly Renovated
- No Onward Chain

Woburn Place, London, WC1H



Total area (approx.): 21.3 sq. m (229.2 sq. ft)