



**Guide Price**  
**£550,000**

**Freehold**

3x  2x  2x 

Vale Road, Loose,  
Maidstone, Kent, ME15

**OVER 60?**

Secure this property  
for up to **59% less!**

*Wards*  
Helping you move forwards



## Main features

- Beautifully presented home in a truly unique semi rural setting
- Stunning scenic surroundings in the heart of Loose village
- Private rear and front gardens
- Ready to move into and immaculately presented, yet still boasts extension potential to the side subject to planning & consents
- Short walk to the village pub, sought after Loose Primary School and on the doorstep of the picturesque conservation area

## Accommodation

### GROUND FLOOR

Entrance Hall  
 Lounge: 12'10 x 10'10 (3.91m x 3.30m)  
 Dining Area: 11'10 x 10'10 (3.61m x 3.30m)  
 Family Room: 20'0 x 10'10 (6.10m x 3.30m)  
 Kitchen: 14'5 x 12'6 (4.40m x 3.81m)  
 Utility Room: 5'1 x 3'0 (1.55m x 0.92m)

### FIRST FLOOR

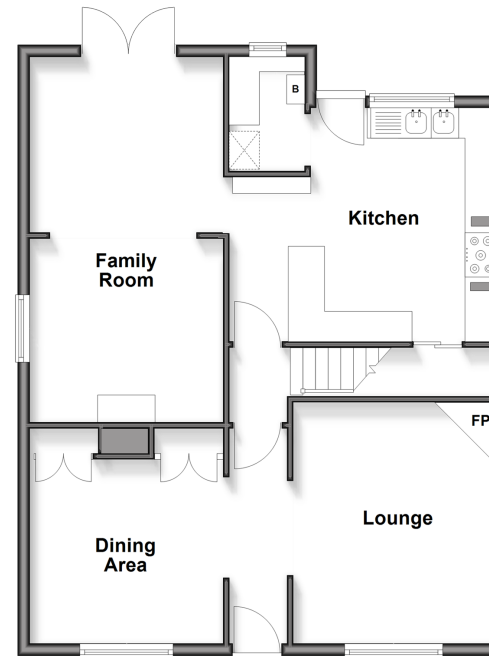
Landing  
 Bedroom 1: 17'1 x 11'10 (5.21m x 3.61m)  
 En-suite Shower Room: 5'1 x 3'1 (1.55m x 0.94m)  
 Bedroom 2: 13'5 x 13'5 (4.09m x 4.09m)  
 Bedroom 3: 12'2 x 12'2 (3.71m x 3.71m)  
 Bathroom: 9'0 x 9'0 (2.75m x 2.75m)

### OUTSIDE

Driveway  
 Front and Rear Gardens

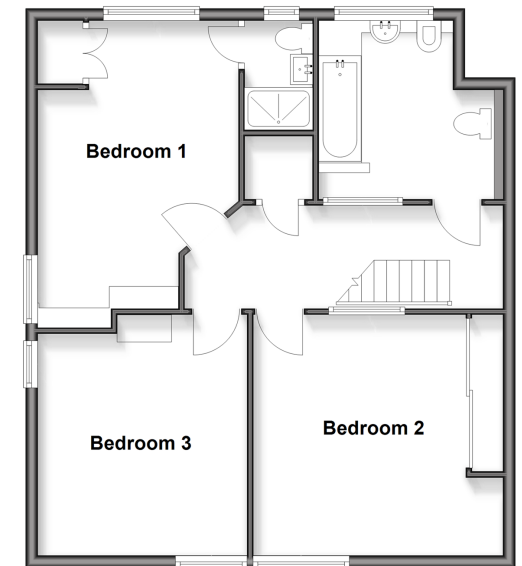
### Ground Floor

Approx. 71.4 sq. metres (768.9 sq. feet)



### First Floor

Approx. 69.2 sq. metres (744.4 sq. feet)



Call Loose - 01622 744067 ■ [wardsof Kent.co.uk](http://wardsof Kent.co.uk)

- Legal advice should be taken to verify fixtures/fittings, planning, alterations and/or lease details
- Through a Homewise Home For Life Plan people aged 60+ can secure this property for up to 59% less, by purchasing a Lifetime Lease

- Appliances & services are untested, dimensions are approximate and floor plans are not to scale



13019982/20260108/KIR/VMK