



92 Trinity Lane, Hinckley, LE10 0BJ
£160,000

wards
Residential

Freehold

NO CHAIN. In need of modernisation, a spacious traditional two bedroom mid terrace, located in Hinckley town centre. The property is ideal for first time buyers, investors and anyone looking to downsize. The accommodation comprises of the following: Living Room, Dining Room, Kitchen with a range of base and wall units and Bathroom. First Floor - 2 Double Bedrooms. Second Floor - Loft Room. Outside - Courtyard area and separate Garden. Additionally this property benefits from having both gas fired central heating and double glazing.

Living Room

4.02 x 3.8 Metres

UPVC front door and UPVC double glazed bay window to the front elevation. Feature fireplace with tiled surround and hearth with carpeted flooring.

Dining Room

3.8 x 3.67 Metres

UPVC front door and UPVC double glazed bay window to the rear elevation. Feature fireplace and access to an under stairs storage cupboard.



Kitchen

3.45 x 2.12 Meters

Galley kitchen comprising wooden wall and base units with contrasting working surfaces. Stainless steel sink with drainer and tiled around around working surfaces. Space for kitchen appliances including cooker and fridge/freezer and plumbing for a washing machine. UPVC double glazed window to the side elevation.

Bathroom

2.12 x 1.77 Meters

With a newly fitted three-piece suite comprising low flush WC, wall hung vanity sink and bath with shower over. Tiled around wet areas and UPVC double glazed window to the side elevation.





Bedroom 1

3.8 x 3.63 Meters

With UPVC double glazed window to the front elevation and carpeted flooring.

Bedroom 2

3.8 x 3.67 Meters

UPVC double glazed window to the rear elevation over stairs storage cupboard and boiler cupboard with carpeted flooring.

Loft Room

4.63 x 3.8 Meters

With UPVC double glazed window to the front elevation.



Outside

Paved easy maintenance courtyard enclosed with timber fencing. Additional rear garden behind.



EPC Rating - D (56)

Council Tax Band - A

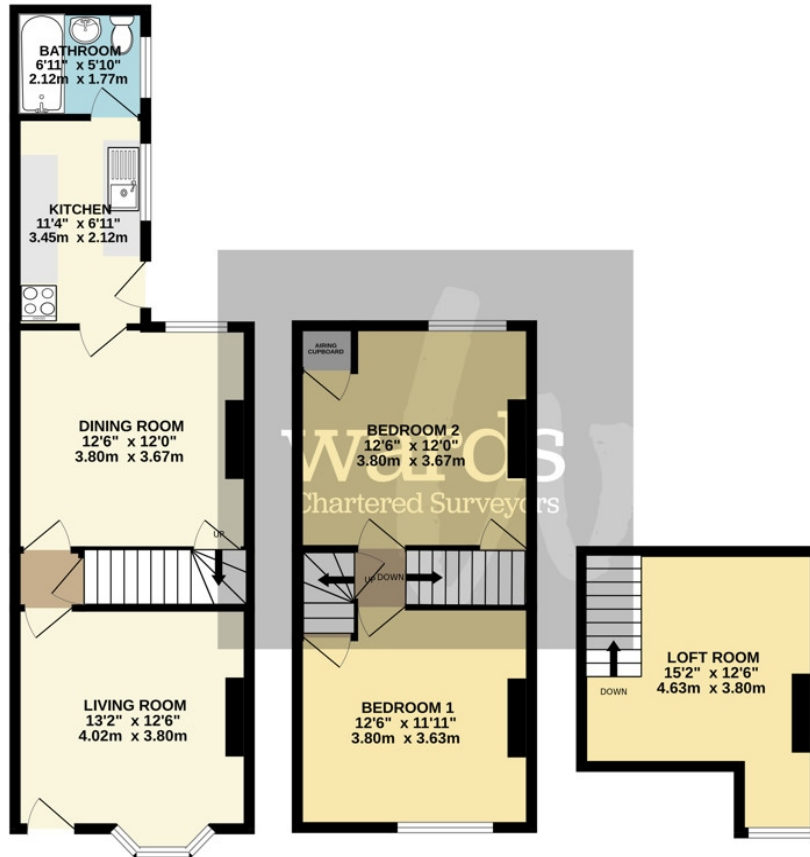
Call 01455 251771 to make an appointment to view this property



GROUND FLOOR
454 sq.ft. (42.1 sq.m.) approx.

1ST FLOOR
329 sq.ft. (30.6 sq.m.) approx.

2ND FLOOR
155 sq.ft. (14.4 sq.m.) approx.



TOTAL FLOOR AREA: 938 sq.ft. (87.2 sq.m.) approx.

Whilst every attempt has been made to ensure the accuracy of the floorplan contained here, measurements of doors, windows, rooms and any other items are approximate and no responsibility is taken for any error, omission or mis-statement. This plan is for illustrative purposes only and should be used as such by any prospective purchaser. The services, systems and appliances shown have not been tested and no guarantee as to their operability or efficiency can be given.
Made with Metropix ©2026



20 Station Road
Hinckley Leicestershire LE10 1AW

01455 251771
info@wardsonline.co.uk

wardsonline.co.uk



These particulars, whilst intended & believed to be accurate are set out as a general outline only and do not constitute any part of an offer or contract. Intending purchasers should not rely on them as statements of representation of fact, but must satisfy themselves by inspection or otherwise as to their accuracy. No person in this firm's employment has the authority to make or give any representation or warranty in respect of the property.

Ward Surveyors Limited - Registered in England No.4567836