



Scan me to get a **detailed property report & valuation** on your house!



Alwyn Road, Bilton  
Guide Price £425,000

**complete** ●●●  
ESTATE AGENTS

# Alwyn Road, Bilton, Rugby

NO CHAIN - Complete Estate Agents are proud to introduce this delightful detached house on Alwyn Road which offers a perfect blend of comfort and convenience. Spanning an impressive 1189 square feet, the property boasts four well-proportioned bedrooms, making it an ideal family home.

Upon entering, you are greeted by a spacious reception room that provides a warm and inviting atmosphere, perfect for both relaxation and entertaining guests. The layout of the house is thoughtfully designed, ensuring that each room flows seamlessly into the next, enhancing the overall sense of space and light. The property features two bathrooms, catering to the needs of a busy household while ensuring privacy and comfort. The well-equipped kitchen is ready for culinary adventures, and it offers ample storage and workspace for all your cooking needs. One of the standout features of this home is the generous parking space, accommodating up to five vehicles, which is a rare find in residential properties. This convenience is particularly beneficial for families or those who enjoy hosting visitors.

The location in Bilton is highly desirable, offering a friendly community atmosphere while being close to local amenities, schools, and parks. This property presents an excellent opportunity for those seeking a spacious and well-appointed family home in a tranquil setting.

**Hallway 4'1" x 15'8" (1.26 x 4.79)**

**WC 2'8" x 8'11" (0.83 x 2.72)**

**Open plan Living/Dining Room 11'3" x 21'8" (3.44 x 6.62)**

**Conservatory 11'4" x 11'11" (3.47 x 3.65)**

**Kitchen 16'0" x 8'8" (4.90 x 2.66)**

**landing 10'6" x 15'0" (3.21 x 4.58)**

**Bedroom One 11'5" x 10'1" (3.48 x 3.08)**

**Bedroom Two 11'4" x 11'4" (3.47 x 3.47)**



**Bedroom Three 8'0" x 12'0" (2.46 x 3.66)**

**Bedroom Four/Study 4'9" x 8'7" (1.47 x 2.62)**

**Master Bathroom 7'8" x 6'7" (2.35 x 2.02)**

**WC 2'7" x 6'5" (0.81 x 1.98)**

**Garage**

**Garden**

### **About Rugby**

Rugby is a market town in Warwickshire, England, on the River Avon. The town has a population of 70,628 (2011 census[1]) making it the second largest town in the county. The enclosing Borough of Rugby has a population of 100,500 (2011 census). Rugby is 13 miles (21 km) east of Coventry, on the eastern edge of Warwickshire, near the borders with Northamptonshire and Leicestershire. The town is credited with being the birthplace of rugby football.

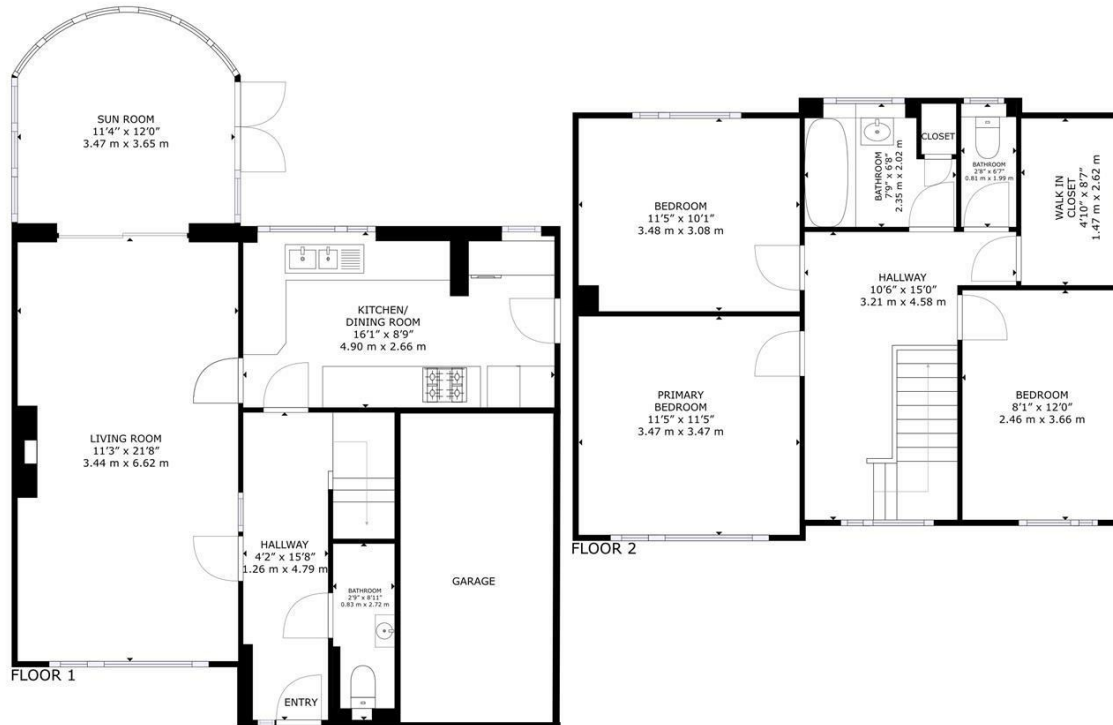
### **Rugby Borough Council**

Rugby Borough Council,  
Town Hall,  
Evreux Way,  
Rugby  
CV21 2RR

### **Agents Note**

The property will require updating but similar neighbouring properties have extended to the rear and loft.





GROSS INTERNAL AREA  
 FLOOR 1: 620 sq. ft, 57 m<sup>2</sup>, FLOOR 2: 569 sq. ft, 52 m<sup>2</sup>  
 TOTAL: 1,189 sq. ft, 109 m<sup>2</sup>  
 SIZES AND DIMENSIONS ARE APPROXIMATE, ACTUAL MAY VARY.



Energy Efficiency Rating		Current	Potential
Very energy efficient - lower running costs			
(92 plus)	A		
(81-91)	B		
(69-80)	C		
(55-68)	D		
(39-54)	E		
(21-38)	F		
(1-20)	G		
Not energy efficient - higher running costs			
England & Wales		EU Directive 2002/91/EC	

Environmental Impact (CO <sub>2</sub> ) Rating		Current	Potential
Very environmentally friendly - lower CO <sub>2</sub> emissions			
(92 plus)	A		
(81-91)	B		
(69-80)	C		
(55-68)	D		
(39-54)	E		
(21-38)	F		
(1-20)	G		
Not environmentally friendly - higher CO <sub>2</sub> emissions			
England & Wales		EU Directive 2002/91/EC	

Misrepresentation Act 1967 - These particulars are believed to be correct but their accuracy is not guaranteed nor do they form part of any contract.

18 Church Street, Rugby, Warwickshire, CV21 3PU  
 T: 01788 550 800  
 sales@complete247.co.uk  
 www.complete247.co.uk

complete ESTATE AGENTS