

Fox Close, Ingleby Barwick



Asking Price £177,500





This especially well cared for three-bedroom semi-detached property is a lovely example of its kind, and certainly merits internal inspection.

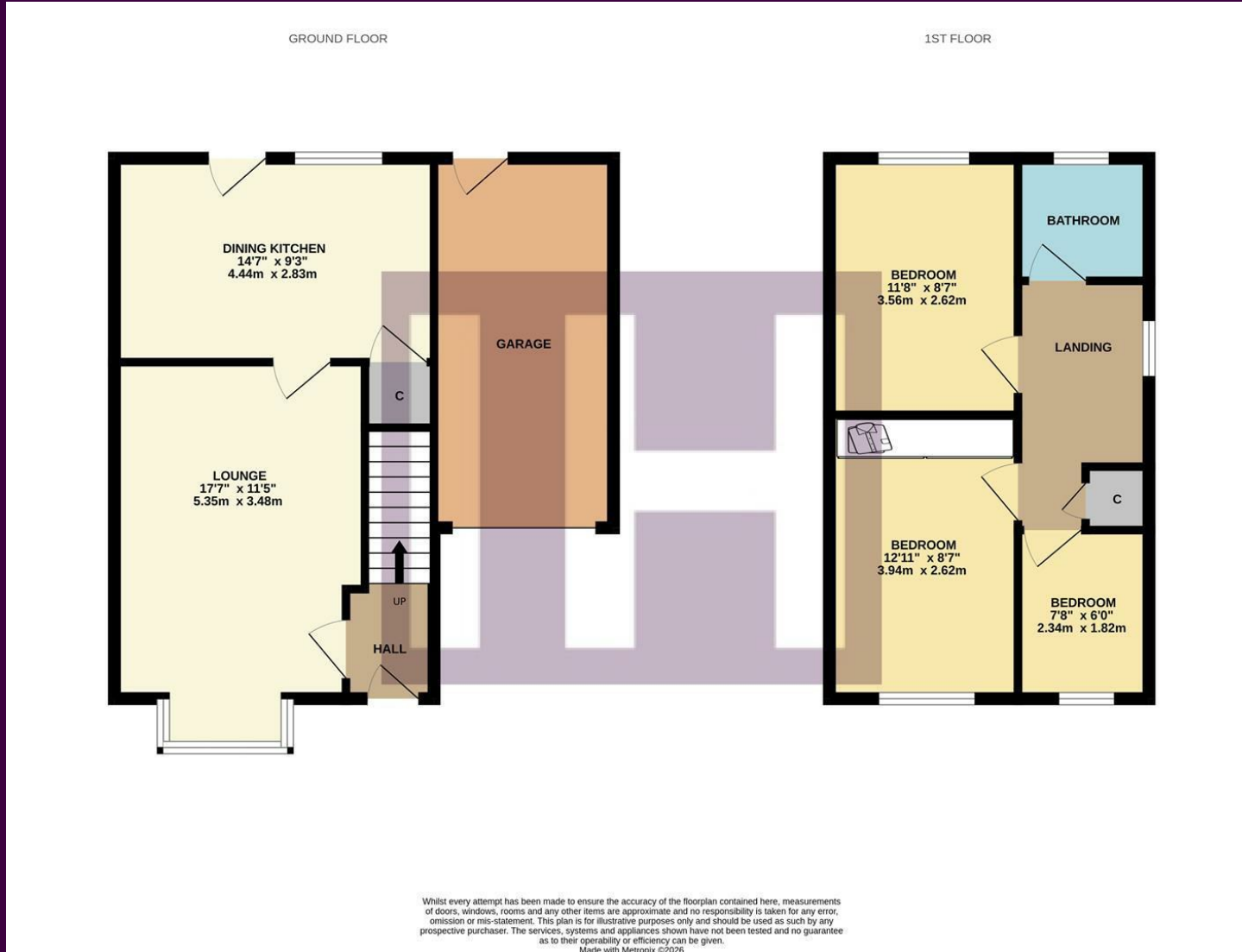
Situated within this popular, detached Ingleby Barwick location, whilst boasting a great plot, with a large block-paved drive, side garage with replaced electric roller door, and attractive landscaped rear garden which enjoys a private rear outlook.

Internally, the well-kept accommodation is warmed by a relaxed combi-boiler, and comprises entrance hall, lounge, and open-plan kitchen/diner to the ground floor. The first floor delivering three bedrooms, the large front with fitted mirror-robos, separate modern refitted family bathroom.

The rear garden is fully fence enclosed, with attractive patios, and a variety of greenery and established planting, designed for low maintenance, complimented by the especially generous drive to the front, which approaches the garage passing the mainly lawned front garden.

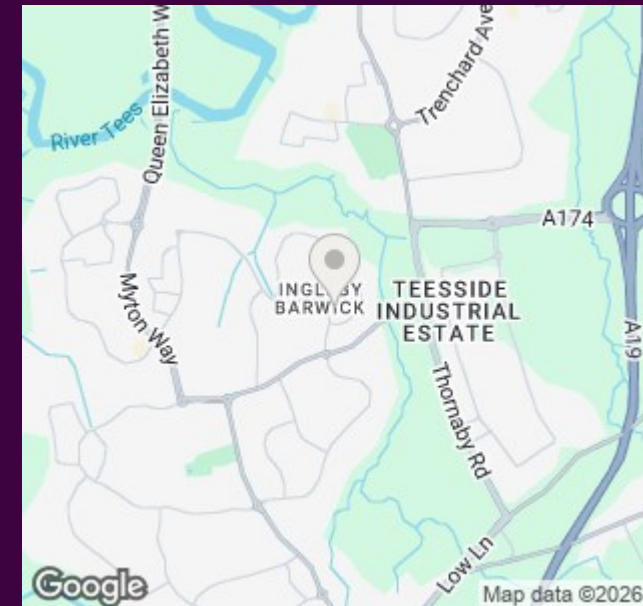


# The Layout



Energy Efficiency Rating		Environmental Impact (CO <sub>2</sub> ) Rating	
	Current	Potential	
<i>Very energy efficient - lower running costs</i>			
(92 plus) <b>A</b>			<i>Very environmentally friendly - lower CO<sub>2</sub> emissions</i>
(81-91) <b>B</b>			(92 plus) <b>A</b>
(69-80) <b>C</b>			(81-91) <b>B</b>
(55-68) <b>D</b>			(69-80) <b>C</b>
(39-54) <b>E</b>			(55-68) <b>D</b>
(21-38) <b>F</b>			(39-54) <b>E</b>
(1-20) <b>G</b>			(21-38) <b>F</b>
<i>Not energy efficient - higher running costs</i>			
England & Wales		EU Directive 2002/91/EC	EU Directive 2002/91/EC
<i>Not environmentally friendly - higher CO<sub>2</sub> emissions</i>			
England & Wales		EU Directive 2002/91/EC	EU Directive 2002/91/EC

# The Location



Council Tax Band:

**B**

Tenure:

**Freehold**



- A very attractive three-bedroom semi detached property
- Extensive block-paved drive and garage with electric roller door
- Beautiful landscaped rear garden with private outlook
- Impressive, modern refitted family bathroom
- Replaced 'Combi-Boiler'
- Viewing advised