

Towers Wills

Town & Country

📞 01935 577 032 | 01460 298 530 | ✉ info@towerswills.co.uk



156, Ilchester Road, Yeovil, Somerset BA21 3BW

£475,000

Towers Wills welcome to the market this deceptively spacious four-bedroom detached chalet bungalow offering highly flexible accommodation across two floors. Featuring a stunning open-plan kitchen and dining room with exposed green oak frame, two ground-floor bedrooms and bathroom, plus two first-floor double bedrooms each with en-suite. Driveway parking for several vehicles, triple-length garage, and a beautifully maintained enclosed garden. Sought-after Ilchester Road location, close to local amenities, Yeovil Town Centre and hospital. Vendors have found their next property.

Description:

Towers Wills welcome to the market this deceptively spacious four-bedroom detached chalet bungalow offering highly flexible accommodation across two floors. Featuring a stunning open-plan kitchen and dining room with exposed green oak frame, two ground-floor bedrooms and bathroom, plus two first-floor double bedrooms each with en-suite. Driveway parking for several vehicles, triple-length garage, and a beautifully maintained enclosed garden. Sought-after Ilchester Road location, close to local amenities, Yeovil Town Centre and hospital. Vendors have found their next property.

Accommodation:

A deceptively spacious and highly versatile four-bedroom detached chalet bungalow, offering flexible accommodation across two floors, generous parking, a triple-length garage and a beautifully landscaped garden.

This impressive home is perfectly suited to a wide range of buyers, thanks to its adaptable layout providing both ground-floor and first-floor bedrooms. Situated on the ever-popular Ilchester Road, the property enjoys a convenient yet private setting, within easy reach of Yeovil town centre and a wealth of local amenities.

The accommodation begins with a welcoming reception hallway which leads through to the main living areas. The living room is a warm and inviting space, featuring a gas fireplace, a window to the side and doorways through to both the kitchen and sitting room. The sitting room provides an additional reception space, ideal as a cosy snug or family room, with a window to the side elevation.

A true feature of the home is the impressive open-plan kitchen and dining room. The kitchen is fitted with a comprehensive range of wall, base and drawer units with timber work surfacing, space for appliances, a central island with breakfast bar and space for a range cooker. Open plan to the kitchen, the dining room is a stunning addition constructed with a green oak exposed frame, windows to both sides and double doors opening directly onto the rear garden — creating a fantastic space for entertaining and everyday family life.

To the ground floor are two generous double bedrooms located to the front of the property, serviced by a family bathroom comprising a bath, wash hand basin and WC.

To the first floor are two further large double bedrooms, both benefiting from their own individual en-suite bathrooms and offering ample space for built-in storage, making them ideal principal bedroom suites.

Outside:

Externally, the property continues to impress. To the front, a spacious driveway provides ample off-road parking and turning for several vehicles,

Key Features

- Detached House
- Four Bedrooms
- Three Bathrooms
- Stunning Open Plan Kitchen/Diner
- Triple Length Garage
- Enclosed Rear Garden
- Large Driveway
- Popular Location

Contact Us

Towers Wills Estate Agents - Yeovil

114, Hendford Hill

Yeovil

Somerset

BA202RF

T: 01935 577032

E: info@towerswills.co.uk

in turn leading to a triple-length garage. The garage offers excellent vehicle storage, along with a rear workshop and additional storage space.

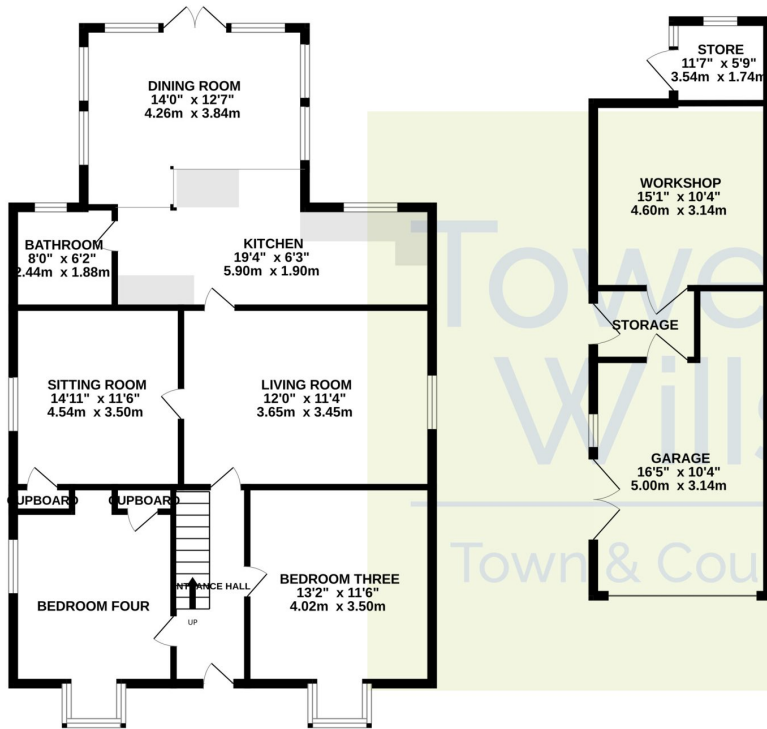
The enclosed rear garden is well maintained and thoughtfully landscaped, featuring a patio area and pergola currently sheltering a hot tub. The majority of the garden is laid to lawn, with well-stocked borders filled with a variety of mature plants, trees and shrubs. To the far end of the garden is a beautifully private and secluded area, perfect for summer entertaining and outdoor dining.

Ilchester Road is a sought-after location within Yeovil, conveniently positioned for local amenities including Tesco, Yeovil Town Centre, Yeovil District Hospital and Yeovil College.

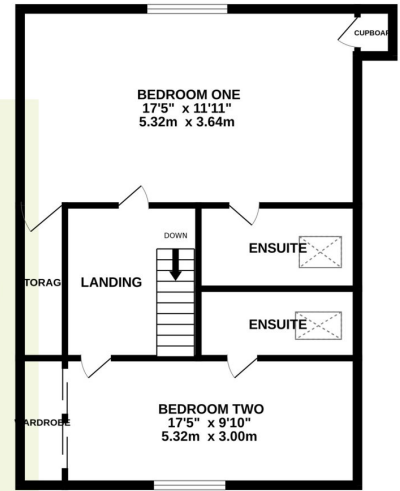


Floor Plan

GROUND FLOOR



1ST FLOOR



Whilst every attempt has been made to ensure the accuracy of the floorplan contained here, measurements of doors, windows, rooms and any other items are approximate and no responsibility is taken for any error, omission or mis-statement. This plan is for illustrative purposes only and should be used as such by any prospective purchaser. The services, systems and appliances shown have not been tested and no guarantee as to their operability or efficiency can be given.
Made with Metropix ©2026

Please Note No tests have been undertaken of any of the services and any intending purchasers should satisfy themselves in this regard. Towers Wills Ltd for themselves and for the vendor of this property whose agents they are, give notice that, (i) these particulars do not constitute any part of an offer or contract, (ii) all statements contained within these particulars are made without responsibility on the part of Towers Wills or the vendor, (iii) whilst made in good faith, none of the statements contained within these particulars are to be relied upon as a statement of representation or fact, (iv) any intending purchaser must satisfy him/herself by inspection or otherwise as to the correctness of each of the statements contained within these particulars, (v) the vendor does not make or give either Towers Wills or any person in their employment any authority to make or give representation or warranty whatsoever in relation to this property.

Photographs / Floor Plans Photographs are reproduced for general information and it must not be inferred that any item is included for sale with this property. Please note floor plans are not to scale and are for identification purposes only. The photographs used in these particulars may have been taken with the use of a wide angle lens. If you have any queries as to the size of the accommodation or plot, please address these with the agent prior to making an appointment to view

Towers Wills

The White House, 114 Hendford Hill, Yeovil BA20 2RF

Yeovil 01935 577032 / South Petherton 01460 298530

info@towerswills.co.uk | www.towerswills.co.uk