



BALFOUR ROAD, TW3

£1,550 pcm

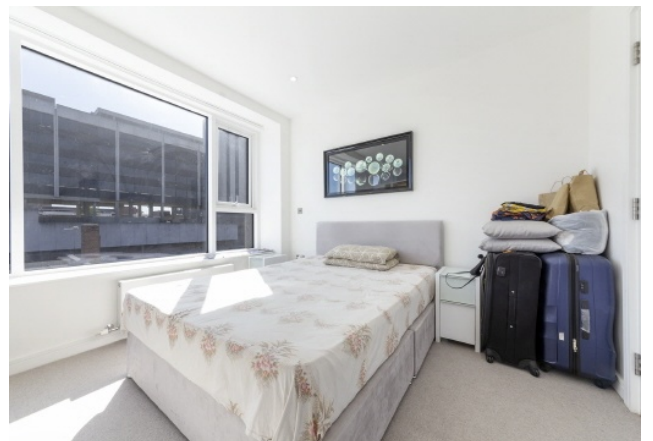
This immaculate 450 sq/ft second-floor apartment features a clever studio-to-one-bed conversion. Boasting expansive double-glazed windows for abundant natural light, the property includes high-end finishes, private parking, and a professional daytime concierge service.

- Modern One-Bed
- Parking Included
- Daytime Concierge Service
- Seconds to Piccadilly Line

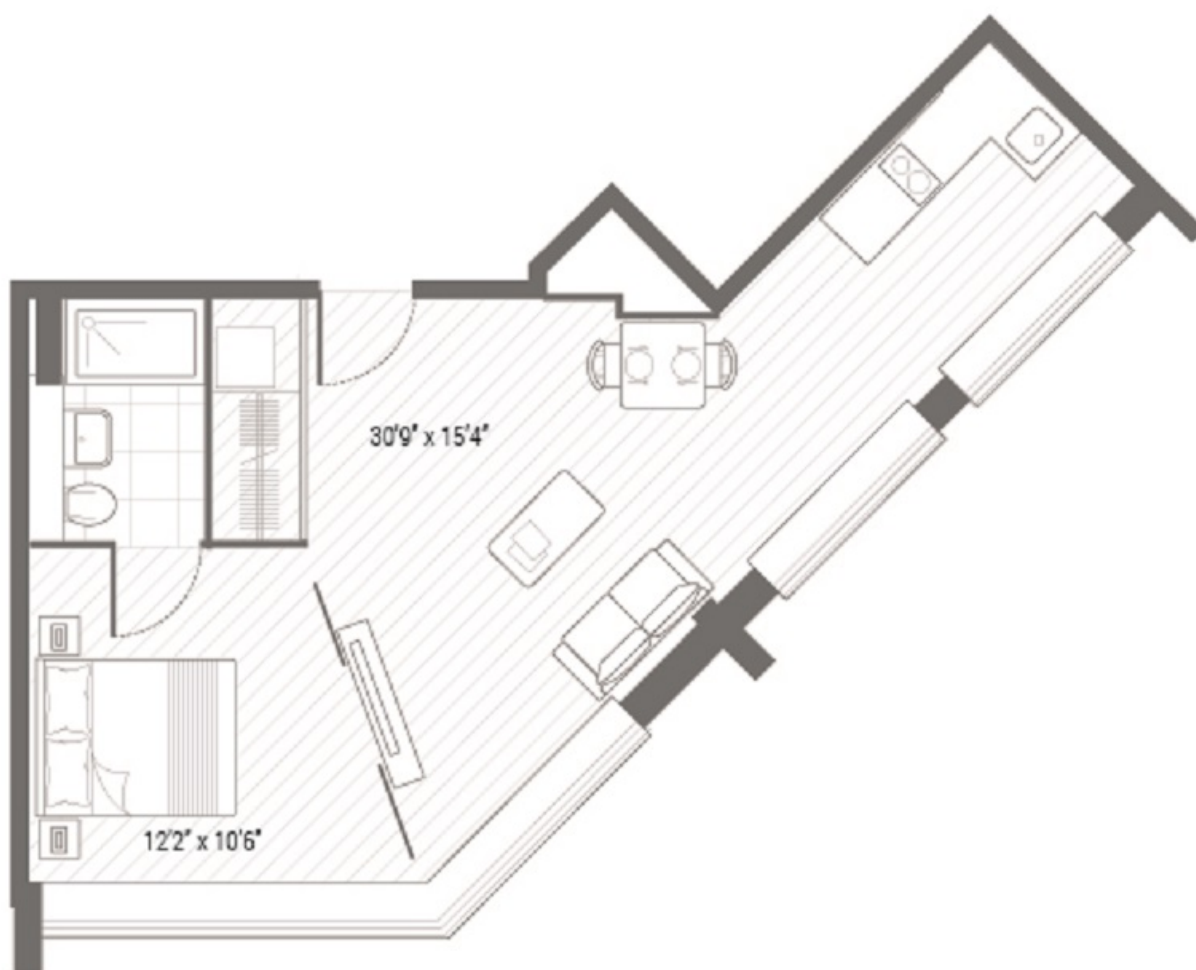


ABOUT THE HOME

Strategically located near Hounslow Central Station, this home offers rapid Piccadilly Line access to Heathrow and Central London. With the M4 and M25 nearby, it provides a seamless commute for residents.







Total area 450 sq.ft. 41.8 sq.m.

LiFE RESIDENTIAL

203 Trentham Court, Victoria
Road, London, W3 6BT
Sales: 020 3668 1112
Lettings: 020 3668 1111

Energy Rating: C. We aim to make our particulars both accurate and reliable. However they are not guaranteed; nor do they form part of an offer or contract. If you require clarification on any points then please contact us, especially if you're traveling some distance to view. Please note that appliances and heating systems have not been tested and therefore no warranties can be given as to their good working order.