

Rathbone Place, W1T

£1,200 Per week

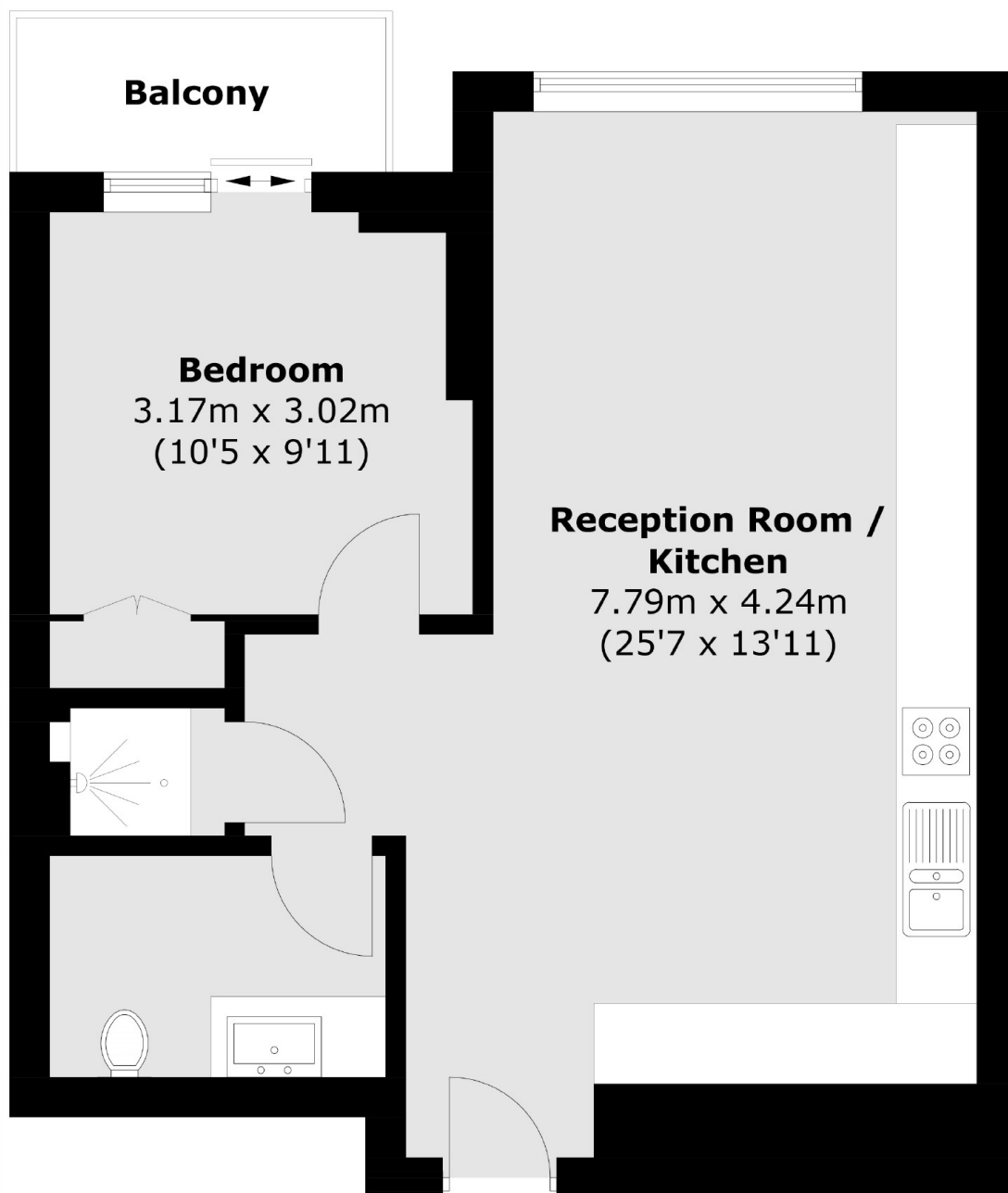
An incredibly bright and large one double bedroom apartment with private balcony on the third floor of this brand new highly sought after development located just off Oxford Street in central Fitzrovia. Residents have access to a 24 hour concierge, beautiful communal gardens, residents' lounge, wine storage and tasting room, screening room, gymnasium, swimming pool, sauna and steam room.

Rathbone Square has been designed to offer a tranquil environment, whilst being conveniently located in the heart of London's West End and just off Oxford Street.

Features

Rathbone Development
24-Hour Concierge
Swimming Pool
Gym and Spa
High Spec
Modern

Rathbone Place, London, W1T



Total area (approx.): 48.4 sq. m (521 sq. ft)
Balcony area (approx.): 3.2 sq. m (34.4 sq. ft)

Dexters

Fitzrovia & Covent Garden
66 Goodle Street
London
W1T 4NG
Lettings
020 7067 2402

Energy Rating: B. We aim to make our particulars both accurate and reliable. However they are not guaranteed; nor do they form part of an offer or contract. If you require clarification on any points then please contact us, especially if you're traveling some distance to view. Please note that appliances and heating systems have not been tested and therefore no warranties can be given as to their good working order.

 **RICS** | Regulated
Estate Agent
and Letting Agent

dexters.co.uk