



21 Neptune House Olympian Court YO10 3UD

£1,100 PCM

2



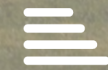
1



1

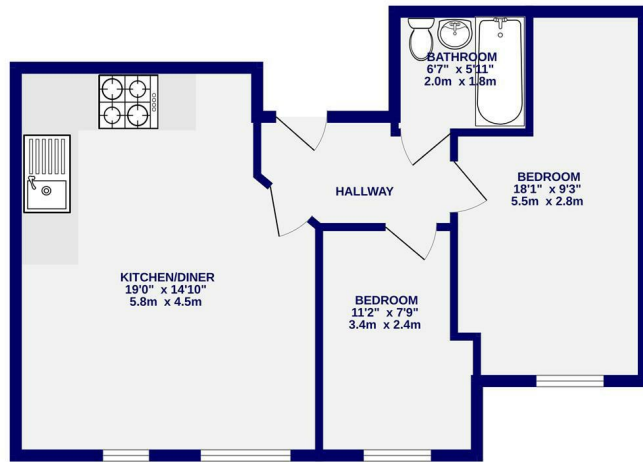


C



A two bedroom second floor apartment within a popular residential development just off Lawrence St, within walking distance to the city centre and transport links. Available to let furnished or unfurnished. The accommodation briefly comprises entrance hallway; spacious open plan living dining area, kitchen equipped with oven, hob, washing machine, fridge freezer; double bedroom; house bathroom with shower over bath; smaller double bedroom. The apartment benefits from an allocated parking space.

Available 10th June 2026 / Deposit £1200 / Council Tax Band C



TOTAL FLOOR AREA: 571 sq.ft. (53.1 sq.m.) approx.  
 Whilst every effort has been made to ensure the accuracy of the foregoing measurements of rooms and any other items are approximate, it is included in the plan the measurements will be part of the overall floor area and no responsibility is taken for any errors, omissions or misstatements. This plan is for illustrative purposes only and should be used as such by any prospective purchaser. The services, systems and appliances shown have not been checked and no guarantee as to their operability.  
 Made with Metropix 02/25



Ashtons Lettings

01904 731404

lettings@ashtonsnet.com